

THE VETS TECHNICAL PACKET



ONE AVENUE OF THE ARTS
PROVIDENCE, RI 02903
WWW.THEVETSRI.COM
T. 401.222.1467
F. 401.222.1466



Welcome

Welcome to The VETS!

We would like to welcome you to Rhode Island's premiere theatrical, performance, and event spaces. Our goal is to make your experience at The VETS as smooth and productive as possible. This Technical Packet was created to provide you with a better insight into what we have to offer and provide you with important information to prepare for your event.

Included within this document are venue contacts, backstage guides, loading and parking information, equipment lists, information about the building, and much more. Review our specs, gather any questions you may have, and we can setup advance calls to prepare for your event.

Here at The VETS, we pride ourselves on working together as a cohesive team from administrators to crew, front of house, to operations, from top to bottom. Our audiences expect a great experience from us, and we take pride in delivering beyond those expectations.

If there is any way that we can assist you in the planning of your event or to answer any questions, please feel free to reach out via email at nmuzzi@pfmcorp.com or by phone at 401-222-1467. We look forward to meeting you and making your experience as memorable as possible!

Nina Muzzi
Technical Director

Table of Contents

Welcome	1
General Information.....	4
Venue Contacts & Package Mailing Address	4
General Event Procedures & Policies.....	5
Covid-19 Information	6
Loading Dock & Freight Elevators	8
Parking & Directions	9
Driving Directions.....	10
Venue Entrances	11
Guest & Patron Parking.....	12
WI-FI Information.....	13
Lobby & Merchandise Layout	14
Seating Chart.....	15
Rigging & Measurements.....	16
Theater Measurements	16
Rigging, Motors, & Truss.....	17
Front of House Truss.....	17
Line Set Schedule	19
Audio Equipment.....	20
Speakers, Monitors, Mixing	20
Stage Power	20
Microphones & Clear-Com.....	21
Assisted Listening Devices.....	22
House Lighting	23
Lighting Fixtures & Equipment.....	23
Hanging Positions.....	24
FOH Lighting Positions	25
Video & Projection	26
House Video Equipment	26
House Soft Goods	27
Risers, Platforms & Staging.....	27
Dance Floor.....	27

Orchestra Shell & Accessories.....	27
Dressing Rooms & Backstage Areas.....	28
Dressing Rooms.....	28
Second Floor (Stage Level)	31
Third Floor Layout	32
Wardrobe Room.....	33
Production Office	33
Greenroom.....	33
Fitness Center	34
Special Effects Rules & Regulations	35
Haze Fog	35
Pyrotechnics.....	35
Dry Ice	35
Confetti	35
Snow Bubbles	35
Strobe Lights	35
Meet & Greet & VIP Experiences.....	36

General Information

Venue Contacts & Package Mailing Address

Venue Directors & Managers			
General Manager	Daniel Schwartz	dschwartz@pfmcorp.com	401-222-1467
Technical Director	Nina Muzzi	nmuzzi@pfmcorp.com	401-222-1467
Director of Operations & Events	Sheamus Fitzgerald	sfitzgerald@pfmcorp.com	401-222-1467
Marketing Director	Michael Gravison	mgravison@pfmcorp.com	401-222-1467
Box Office Manager	Tara Edwards	tedwards@ppacri.org	401-421-2787
Office Manager/Hotels	Doreen Vitale	dvitale@pfmcorp.com	401-222-1467
Security Director	Dave Luongo	dluongo@ppacri.org	401-421-2997
House Manager	Deb Correia	dcorreia@pfmcorp.com	401-222-1467
House Manager	Maureen Pepin		401-222-1467

IATSE Local #23 Department Heads & Local 830 Wardrobe Heads			
Business Agent Local #23	Charlie Ryan	cryan@iatse23.org	508-216-6071
Head Carpenter Rigger	Jared Brackett	jaredbrackett89@yahoo.com	401-363-2121
Head Electrician	Tony Caramello		
Head Audio	Michael Moore	mdmoore14@gmail.com	401-413-0207
Head of Props	Richard Rossi	chardrr@yahoo.com	401-447-7229
Wardrobe Business Agent	Debbie Voccio	debbievoccio@yahoo.com	401-527-5009
Wardrobe Steward	James Ferreria	ribeef11@aol.com	774-991-2624

MAILING ADDRESS FOR DELIVERIES AND PACKAGES

Please send all packages to the following address and ensure each package has the show or artists name listed on the label. Packages that arrive prior to event day will be held in the Administration Office and brought to the Production Office at Load-In.

The VETS
83 Park Street
Providence, RI 02903

Attn: Artist or Show Name

General Information

General Event Procedures & Policies

Lobby Doors	1 Hour before advertised event time (unless otherwise specified)
House/Theater Doors	30 minutes prior to scheduled showtime (unless otherwise specified)
Box Office	Closes after intermission or 30 minutes after showtime.
Curfew	Up to 1 hour post load-out to shower and exit the building.
First Aid & AED	First-aid cabinet and AED are both located off stage left in the crossover hallway.
Credentials	All show personnel must always have valid credentials, or they may be stopped by security.
Patrons Standing or Dancing	For concerts if a patron wants to stand at their seat that is ok. If most of the audience is sitting and they are disturbing others, then they will be directed by our house staff to an appropriate area. Under no circumstance can people block aisles, crowd the stage, or walk towards an area they do not have a ticket for. RI Fire Code requires aisles always remain free and clear.

CAMERA POLICY

Unless Otherwise Discussed:

*For concerts, The VETS allows cell phone cameras, no professional cameras, and no flash.

*The VETS does not allow cameras or recording of any kind for theatrical presentations or philharmonic concerts unless approved by the promoter.

General Information

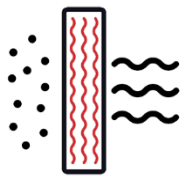
Covid-19 Information

***The VETS does not require proof of vaccination, or a negative COVID-19 test to enter.**

***All VETS staff & volunteers are required to be fully vaccinated and boosted.**

*** Masks are optional and disposable masks are available free of charge to anyone.**

If you are a promoter and your policy varies from our standard Covid-19 policy, please let us know immediately so any changes for your specific event can be communicated to patrons in advance.



Air Quality

The VETS has Installed MERV-13 filters and established enhanced outside air exchange protocols to provide greater amounts of fresh air from its air handling system.



Cleanliness

Through our partnerships with Clorox, increased janitorial protocols have been implemented across all areas of the building, focusing on increased cleaning and sanitizing with specific emphasis on high touchpoints and frequency utilizing the latest in Clorox Total 360 Electrostatic Technology.



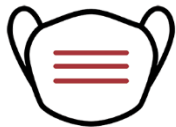
Contactless Amenities

Touchless Purell hand sanitizer dispensers have been installed throughout the venue. In our restrooms, we have installed automated flush devices for our toilets and urinals as well as touchless Purell soap and paper towel dispensers. Self-scanning ticket kiosks have been installed to allow patrons to scan their own tickets upon entry.



Concessions

Concessions will be available and new contactless payment options are available including Apple Pay. Guests may lower their mask only while actively eating or drinking.



Mask Policy

Masks are optional for all patrons. Policies follow updated metrics from the Centers for Disease Control and the RI Department of Health.



General Information

Loading Dock & Freight Elevators



Elevated Loading Dock: At truck height featuring a hydraulic leveler directly onto stage left. Width of the dock clearance is 10' 6" wide x 14' high. We also have an inhouse ramp that we can use to bring in equipment.

Due to Rhode Island Fire Code, the trailer can remain in the loading dock during the performances however the cab must be detached and parked outside the facility due to necessary egresses being blocked.

Freight Elevator: Located on Park Street, going down the hill. From street level elevator goes to greenroom (under stage) as well as stage level on USL. Elevator dimensions: 7'7" deep x 5'10" wide. Elevator door height: 5'10" wide x 6'8" high.

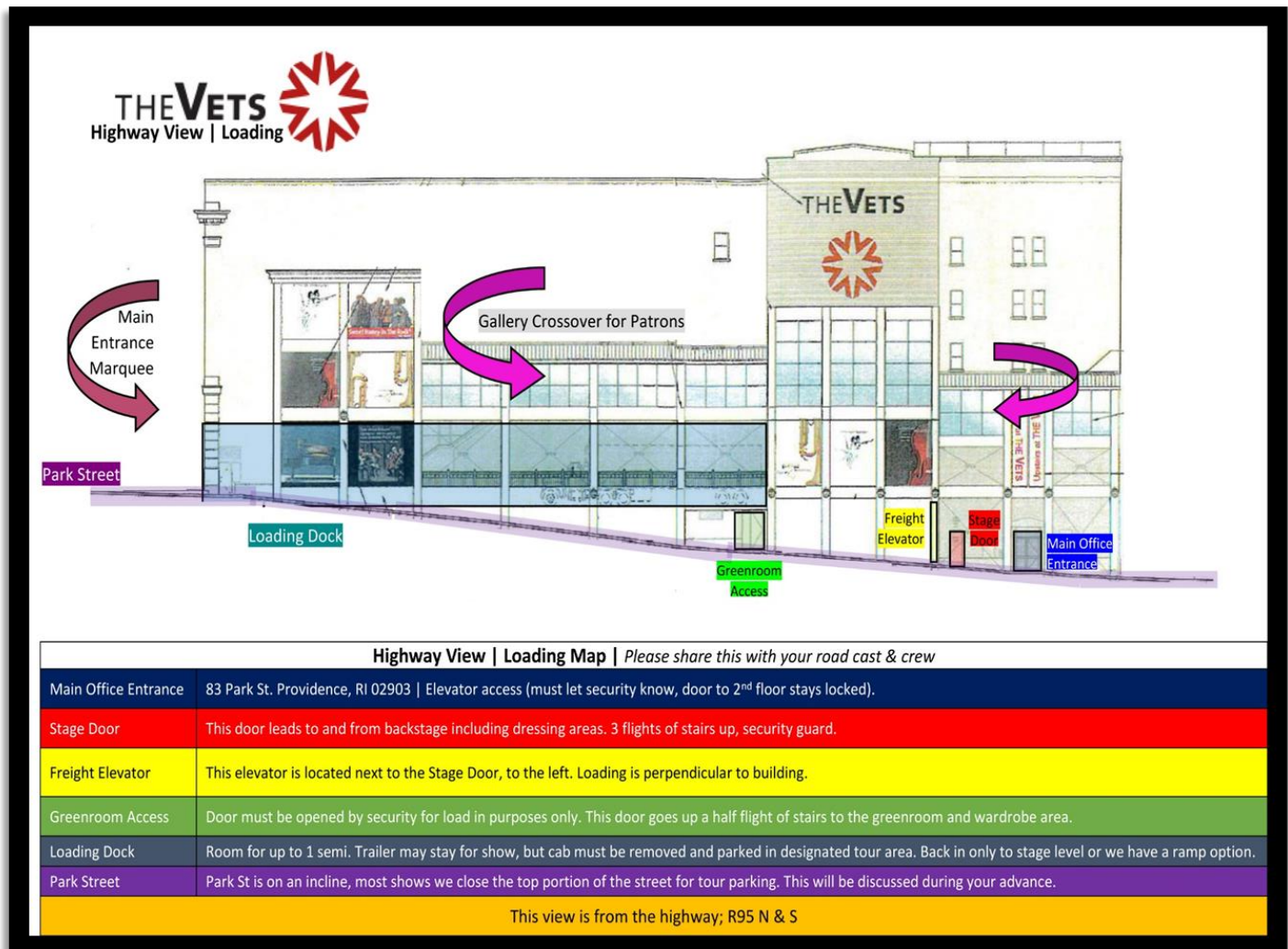


Trolley Hoist:

Featured immediately inside the loading dock, on stage, is a 3-ton trolley-hoist motor mounted on an I-beam for assistance stacking and un-stacking cases.

General Information

Parking & Directions



- There is the ability to park one (1) 53' trailer on the Loading Dock.
- For additional tour parking, Park Street is available to park tour vehicles. From our front circle to the traffic light at Smith Street.
- Long Term truck parking is available at Exit 5B on Interstate 95. This is approximately 20 minutes south of the venue and Providence.

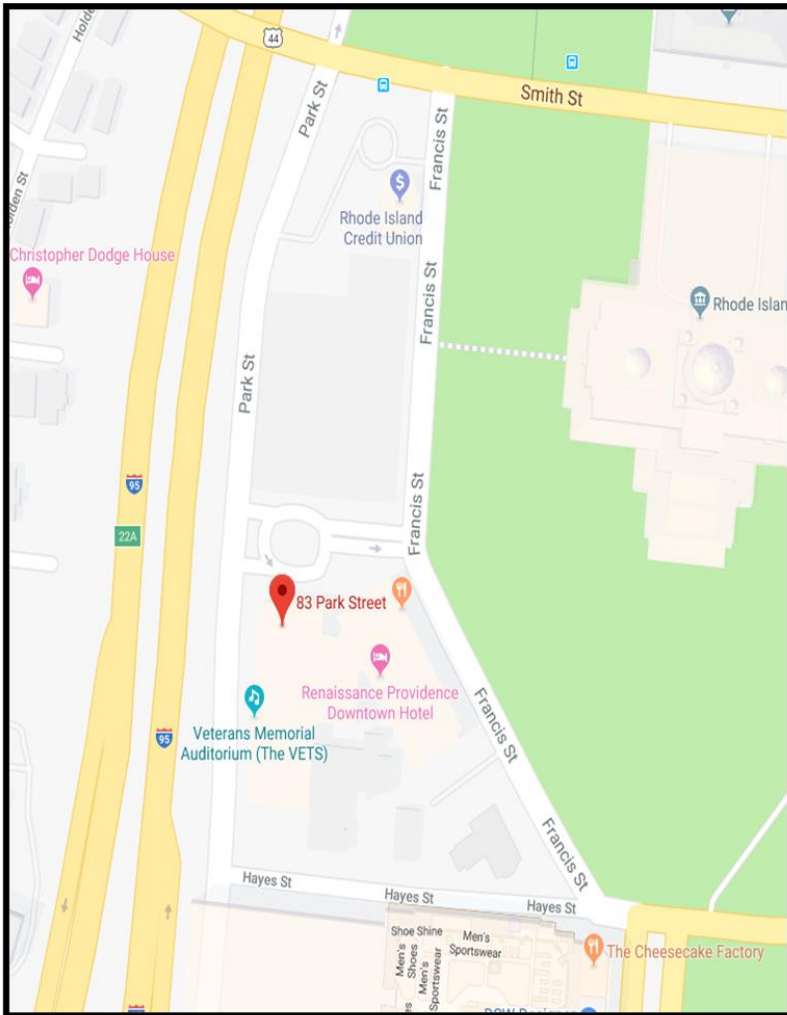
Due to Rhode Island Fire Code the trailer can remain in the dock during performances however the cab must detach and park outside the facility (discuss parking during advance).

- It may be necessary to close some of the surrounding streets for tour parking needs. This will be discussed in your advance process. Please let us know roughly what time your caravan will arrive/depart from the venue so that we pull the proper permits.

No Shore power or water hook ups are available at this time; however, you may run a generator.

General Information

Driving Directions



From Points North

- 95 South to Exit 22A-22B – 22C for RI-10 W/Providence PI towards US-6W
- Keep right to continue Exit 22C
- Turn right onto Providence PI
- Providence PI turns slightly left and becomes Park St.
- The VETs will be on your right

From Points South

- 95 North to Exit 22A-B-C
- Take Exit 22A-B-C for US-6 W/RI 10 W towards Hartford CT
- Keep right to continue on Exit 22C, follow signs for Providence PI and merge onto Providence PI
- Providence PI turns slightly left and becomes Park St.
- The VETs will be on your right

From Points East

- I-195 W to
- Keep right to continue US-6 W
- Merge onto I-95 N/US-6 W
- CONTINUE – From Points South

From Points West

- US-6E to Downtown Exit
- Take Dean St. Exit from US-6 E
- Continue Dean St. Take right onto Providence PL
- CONTINUE – From Points South

General Information

Venue Entrances



Upon entering the area, you will see the **Main Entrance** to The Vets.

Note the **Loading Dock** to the right. This is for loading and unloading tractor trailer trucks. Once your truck(s) is unloaded please have your driver remove the cab and park it in the designated area.

Stage Door is marked as such; staff, crew, and talent will enter through this door prior to main entrance being open.

Bus & Trailer Cab Parking is area between Smith St. and front entrance of The Vets. Parking will be designated via advancement with Technical Director.

Main Entrance is as shown in photo above.

The Gallery is the public cut through from Park St. to the main lobby.

Loading Dock is as shown in photo above.

Stage Elevator is used as a secondary loading location.

Stage Door is marked as such; staff, crew, and talent will enter through this door. (3 flights up to stage)

Park Street Entrance is also used by the public to enter building once doors are open.



General Information

Guest & Patron Parking

Guest Parking

Mall Parking | Secure paid parking is available at the Providence Place Mall North Entrance, directly behind The VETS at a rate of \$2.00 for the first 5 hours.

To exit the lot on foot, take the north elevators or stairs located at the rear of BOSCOV to level “B”. This will bring you to street level directly behind the theater. Proceed north up the sidewalk either side to the theater front entrance.

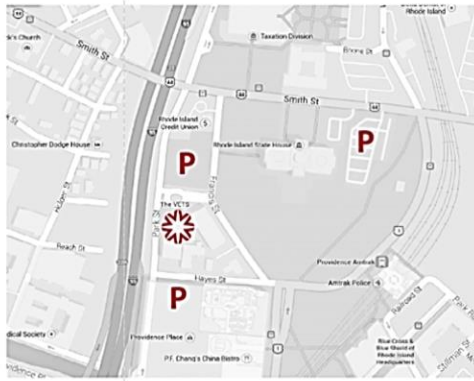
VETS Lot | The VETS parking lot is open for most shows on a first come first serve basis and is \$15.00 per vehicle.

Handicapped Parking | Handicapped parking is in the front of the theater; spots are first come first serve.

Free Parking | Free parking is available in the State of Rhode Island lots on Smith Street. On-street parking is available on Francis and Smith Streets.

Parking Information

- The VETS lot located directly in front of the venue is \$15. Entrance to the lot is on Park Street.
- The Providence Place Mall garage is located directly behind The VETS. Parking is \$2 for the first 5 hours.
- Free parking is available in the State House parking lots on Smith Street (VETS guests are allowed access to this lot during VETS events regardless of signage saying state house employees only).
- On-street metered parking is available on Francis and Smith Street.



General Information

WI-FI Information



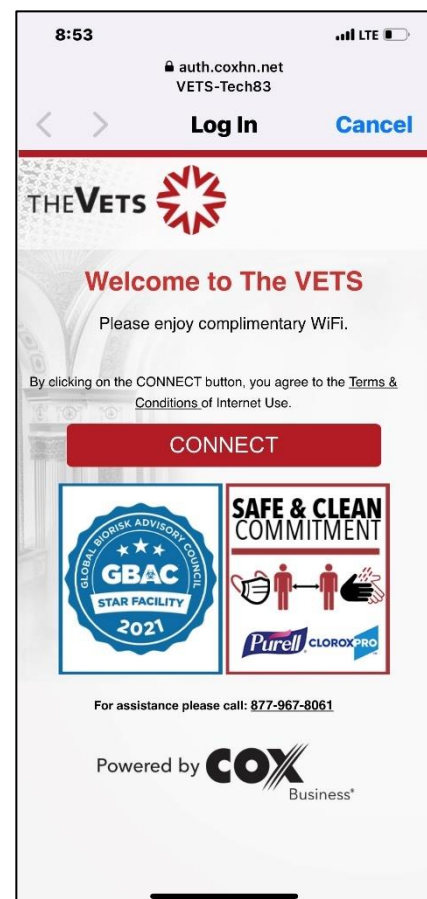
The VETS has partnered with Hospitality Network (HN), an affiliate of Cox Business to provide a complete Wi-Fi network at VETS. HN is the industry's leading communications company with venues across the country such as the new T-Mobile Arena in Las Vegas, and numerous casinos, hotels, and convention centers across the country.

Hospitality Network installed 31 Cisco 802.11ac wireless access points with simultaneous dual band enterprise grade radios. This network allows you to walk from the dressing rooms to the stage, across the theater and lobbies while staying connected the entire time as your device automatically connects from one access point to the other.

How to Connect

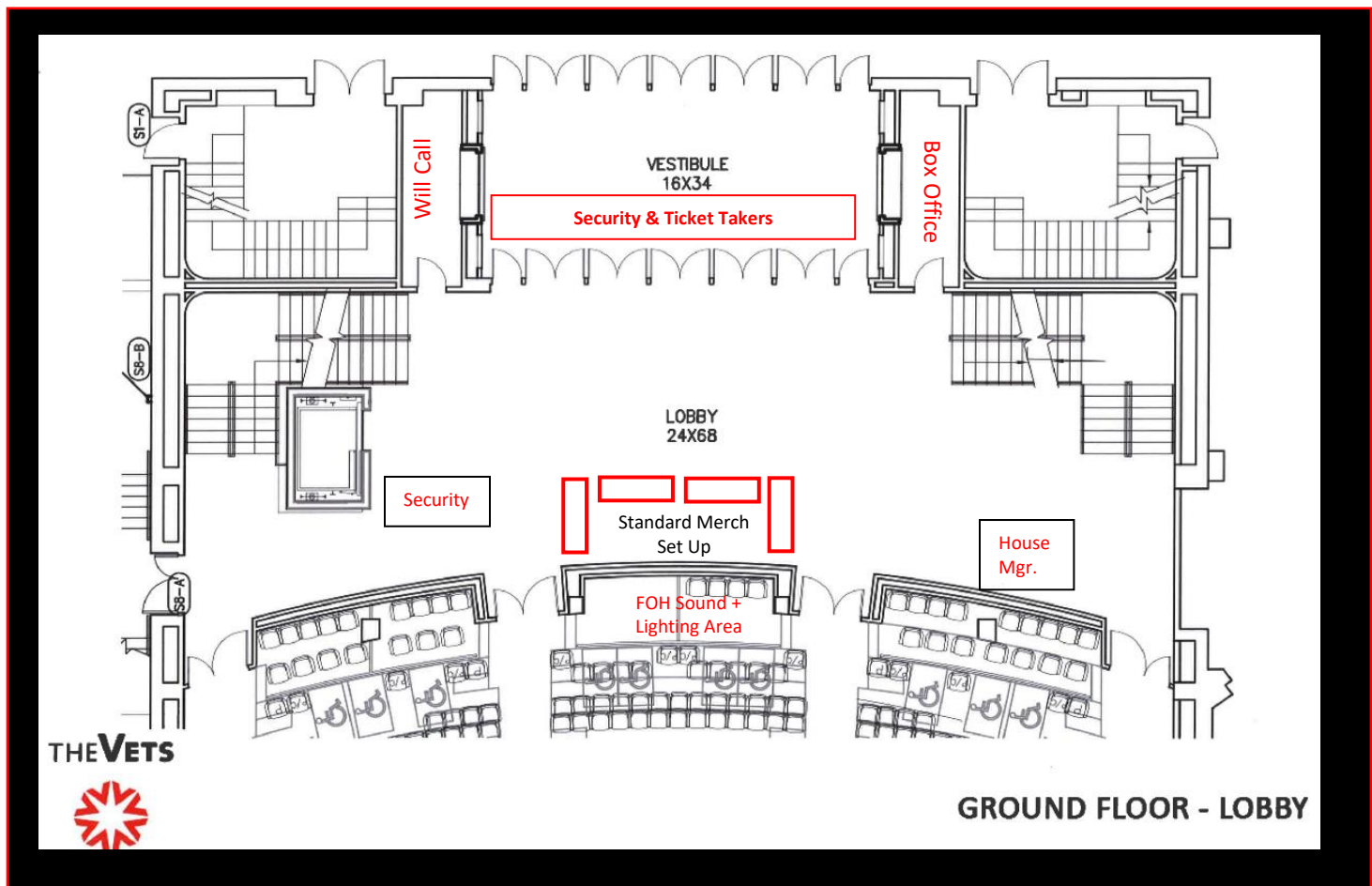
- 1.) Go to the WI-FI settings on your device.
- 2.) From the available accounts select: **VETS-Tech83**
- 3.) Enter the required password: **401 222 1467** (no spaces)
- 4.) A Splash Page will then appear like this picture. Select **Connect** to agree to the terms and conditions of utilizing the internet and you will then be automatically connected.

*****It is important to know The VETS does not have any wired hard lines available.*****



General Information

Lobby & Merchandise Layout



Security Our Security Supervisor on duty for your event will always be stationed at the Security Podium. Fire Detail as well as Police Detail will check in with this member of security for each event. (if applicable) This security guard will also convey any show specific rules and regulations to each member of the security team per show as well as keep in contact with backstage (security guard and house production manager) if any problems arise, there need to be any escorts, or if a runner is needed.

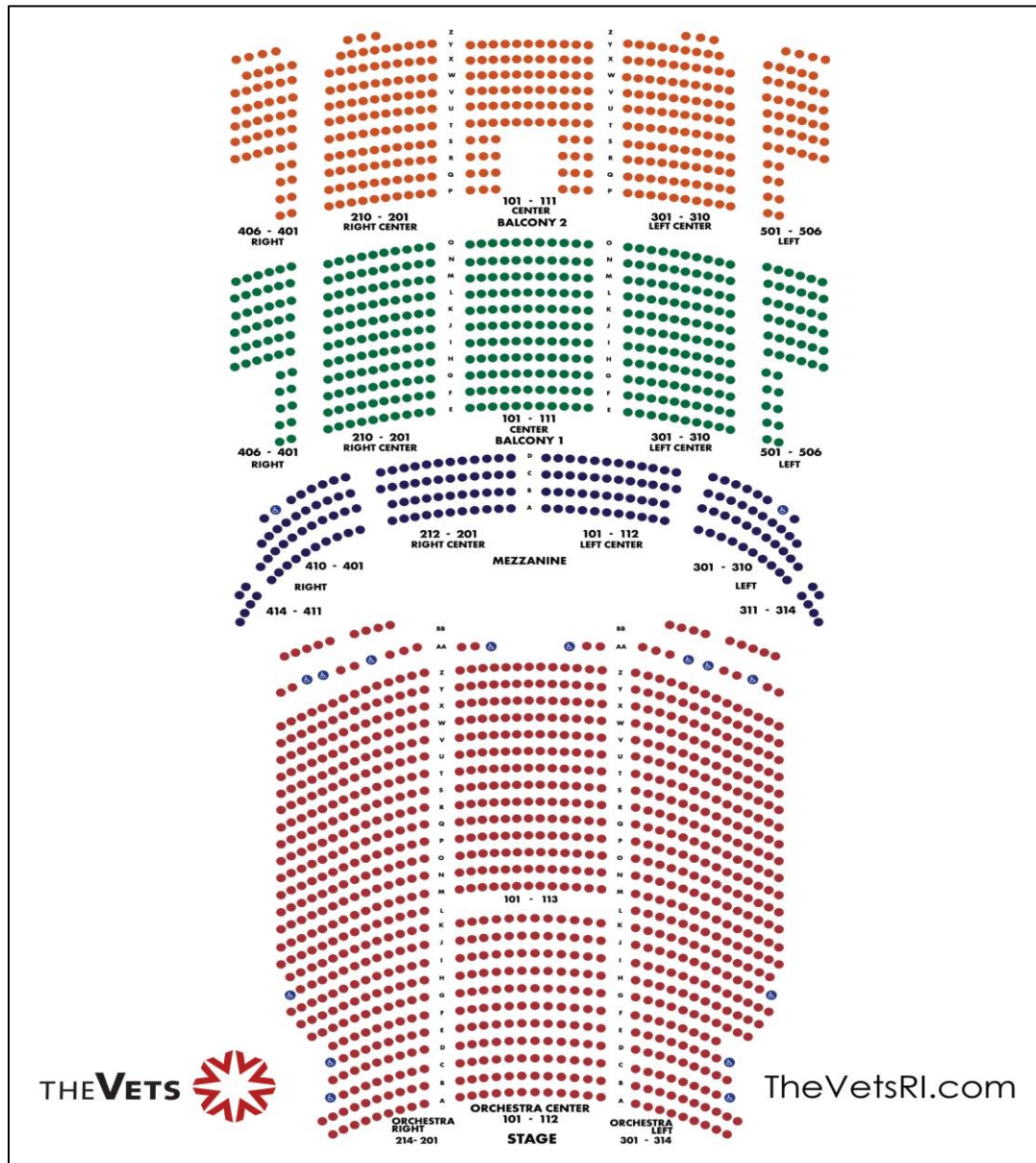
House Manager Stationed at the House Management podium will be either Pat Lynch or Deb Correia, our House Managers. They will delegate aisle captains as well as ushers to their appropriate stations, handle any patron concerns or needs as they arise, as well as communicate with backstage (house production manager) if there are any show holds, or emergencies.

General Information

Seating Chart

Theater Capacity		
Orchestra Level	1005 Seats	14 Wheelchair Locations
Mezzanine	182 Seats	2 Wheelchair Locations
Balcony 1	433 Seats	
Balcony 2	388 Seats	
Total Capacity	2008 (Including ADA Locations)	

To Download A Seating Chart Copy: [Click Here](#)



Rigging & Measurements

Theater Measurements

Area	Description	Feet	Meters
Proscenium	Width	48'	14.63m
	Measurement to fixed valance	23'-7"	7.01m
Stage	Wall to wall	85'	25.90m
	Fire curtain to back wall	39'-6"	11.88m
	Apron lip to back wall	50'	15.24m
	Pit lip to back wall	60'	18.28m
Wings	SL loading dock door + freight elevator	24'	7.31m
	SR stairs to green room + and fly deck with 15' clearance	13'	3.9m
Grid	Height stage to grid	65'-3"	19.81m
	Height stage to loading rail	53'	16.15m
	Height stage to fly rail	15'	4.57m
Apron	Depth downstage of plaster line	3'-1"	.91m
Auditorium	Projection booth to DS centerline	153'	46.63m
	Box boom to DS centerline	55'	16.76m
	Balcony Rail to DS centerline	66'	20.11m
	FOH mix position (<i>snake pull under seats</i>)	250'	76.2m
	Orchestra level seating to DS centerline	89'	27.12m
	House width, wall to wall	72'	21.94m
Orchestra Pit	Depth of fixed pit (<i>lip of stage to pit floor</i>)	6'	1.82m
	Width of curved front of pit	42'	12.80m
	Depth of pit from lip to edge of apron (<i>largest surface area</i>)	10'	3.04m
Orchestra Pit Notes:	<ul style="list-style-type: none"> - Full pit cover/deck is in place for many events. This extends the DS performance area by 10' at center; eliminating the gap between artist and audience. 		
	<ul style="list-style-type: none"> - Arrangements must be made during your advance to remove pit cover to use. It holds about 20 folding chairs and music stands. 		
	<ul style="list-style-type: none"> - The only way to get into the pit is via the greenroom, which is under the stage. 		
	<ul style="list-style-type: none"> - To use, would require an 8h labor call for the removal and restore of the decking. 		

Rigging & Measurements

Rigging, Motors, & Truss

6 FOH RIGGING POINTS

House Left **A** is 9'-4" from CL

- no motor installed

House Left **B** is 14'-3" from CL

- **1-Ton CM House Motor Hung**

House Left **C** is 19' from CL

- no motor installed

House Right Mirrors House Left

House Right **A** is 9'-4" from CL

- no motor installed

House Right **B** is 14'-3" from CL

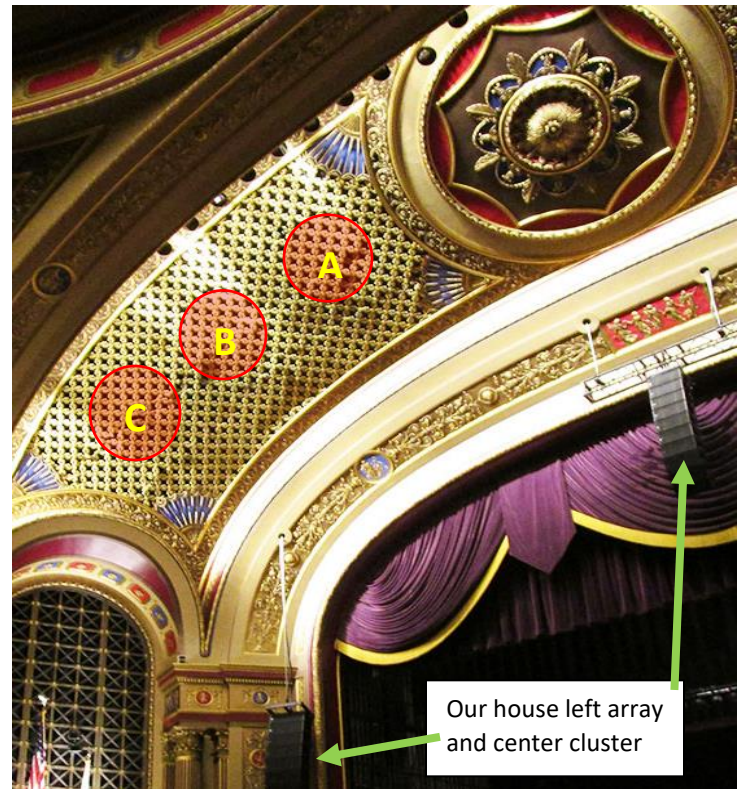
- **1-Ton CM House Motor Hung**

House Right **C** is 19' from CL

- no motor installed



Denotes FOH Hanging Point Area



Our house left array and center cluster

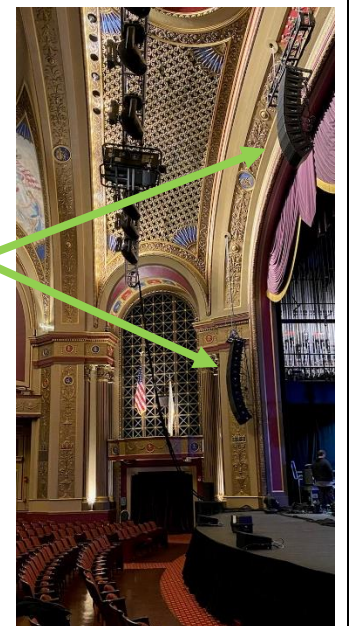


FOH RIGGING NOTE

The FOH rigging points hang OVER house seats (see photo). While they are ideal for lighting, we recommend that any audio equipment that a tour supplies should not be hung on this truss. Our house audio does not come down. Any additional audio equipment that a tour supplies for audience amplification, should be placed on the deck under the SL + SR line arrays.

STAGE RIGGING NOTE

Rigging points on stage are center, running upstage and downstage and every 7'-6" from center. (Well steel only, no midpoints unless bridled)
Please inquire about the amount of weight our overhead grid can support, as there are limitations.



Additional FOH Truss Image

Truss is NOT pre hung with fixtures, this is just an illustration of where it would be positioned should your event require one. Hanging would be during the load-in or pre-hang if required, only the 2 - house motors are left in place



Additional Notes:

FLY RAIL - SR	48 LINE SETS — UPRIGHT DOUBLE PURCHASE ARBOR SYSTEM		FLY-RAIL LOCATED @ 15’ FROM DECK LOADING GALLERY @ 53’ FROM DECK
	BATTEN LENGTH: 52’		1,000LB CAPACITY PER BATTEN
STACKING MOTOR	A 3 TON STACKING MOTOR DIRECTLY INSIDE OR LOADING DOCK DOORS. CAN ONLY HANDLE DOUBLE STACKED ROAD CASES. ANYTHING HIGHER THAN DOUBLE STACKED MAY REQUIRE THE SET UP OF A SECOND MOTOR.		
TRUSS + BOOMS	40 — 12: SIDE ARMS		8- 16’ BOOM PIPES, 50LB. BASES, AND TIE OFFS.
	10 X THOMAS GENERAL PURPOSE TRUSS 18” X 12” X 8’ SECTIONS (ODD SIZE)		
ACCESSORIES + EQUIPMENT	GENIE AWP 36 LIFT	20 - 10LB SANDBAGS	32 - FIXED CHEESEBOROUGH

Rigging & Measurements

Line Set Schedule

LINE	FROM PLASTER	DESCRIPTION	NOTES
-	-4"	House valance, purple; fixed @ 23'-7"h	Fixed Permanent
1	1' 0"	Adjustable house valance, purple	Fixed Permanent
STAGE	1' 8"	House main, purple (guillotine or travels)	Fixed Permanent
2	2' 4"		
3	3' 0"	1 st electric (circuits 43-77)	
4	3' 8"		
5	4' 4"	Movie screen (36' x 22')	Fixed Permanent
6	5' 0"	Acoustic shell ceiling #1	Fixed Acoustic Shell
7	6' 4"	Black border	
8	7' 0"	Black legs	
9	7' 8"	2 nd electric (circuits 78-101)	
10	8' 4"		
11	9' 0"		
12	9' 8"		
13	10' 4"		
14	11' 0"	Black border	
15	11' 8"	Black legs	
16	13' 2"	Acoustic shell ceiling #2	Fixed Acoustic Shell
17	13' 8"		
18	14' 4"	3 rd electric (circuits 102-125)	
19	15' 0"		
20	15' 8"		
21	16' 4"	Black border	
22	17' 0"	Black legs	
23	17' 8"		
24	18' 4"	Full stage black traveler (guillotine or travels)	Fixed Permanent
25	19' 8"		
26	20' 4"		
27	21' 0"	Acoustic shell ceiling #3	Fixed Acoustic Shell
28	21' 8"	Black border	
29	22' 4"	Black legs	
30	23' 0"		Fixed Permanent
31	23' 8"	4 th electric (circuits 126-149)	
32	24' 4"		
33	25' 0"		
34	27' 1"	4A electric (4 par bars as backlight)	
35	27' 8"		
36	28' 4"	Acoustic shell ceiling #4	Fixed Acoustic Shell
37	29' 0"		
38	29' 8"	Black border	
39	30' 4"	Black legs	
40	31' 0"		
41	31' 8"	5 th electric (circuits 150-179)	
42	32' 4"		
43	33' 8"	Black legs	
44	34' 4"	Seamless natural white muslin Cyc w/bottom pipe	
45	35'	Full stage black	

****Please Note: If a full strip is needed on stage; all line sets will be gridded, unless discussed in detail during advance process.*****

Audio Equipment

Speakers, Monitors, Mixing

Main House System

Placement of Equipment		Type of Equipment
Main Arrays	Stage Left + Right Arrays (Hung on ½ ton motors)	24 Meyer M'elodie 12 per side
	Center Cluster (Hung on a 1-ton motor)	10 Meyer Mina
	Subs	4 Meyer HP-700 2 Left & 2 Right
Front Fills	On front of stage or house floor if stage stairs are in use	2 Meyer Mina
Console	FOH Mix Position – 127' from stage.	Yamaha QL5 Digital Mixing Console
	MON Mix Position - SL	Yamaha M7CL Mixing Console
Snake	Located in Audio Control Room, fed via patch panels located DSL, DSR, and Orchestra Pit	DigiCo SD Rack

Monitor Speakers

Quantity	Type of Equipment
2	Meyer UM-100P powered wedges
2	Meyer UM-1p powered wedges
2	Meyer MJF-212 powered wedges
4	L'acoustic 108P powered wedges

DI | Stage Box | Pre-Amp Catalogue

	Quantity	Type of Equipment
Direct Boxes	4	Radial J48 Active Direct Boxes
	4	Whirlwind Director DI's (passive)
	4	Whirlwind IMP 2 DI's (passive)
	1	Whirlwind pcDI Stereo Computer Interface
Stage Boxes	2	Wireworks MMB 19 channel stage input boxes
	2	Wireworks MMB 12 channel stage input boxes
	2	Wireworks MMB 6 channel stage input boxes
	All necessary G-Block connectors and cables	

SNAKE PULL FROM FOH to ORCHESTRA PIT IS 250'

Stage Power

AUDIO POWER | 200amp service | Isolated transformer | Main Connection on Stage Left

LIGHTING POWER | 600amp service | 3 phase | camlocks no open wires | Main Connection Stage Left

Audio Equipment

Microphones & Clear-Com

Wireless Microphones		
Quantity	Type	Notes
4	Shure QLXD 124/85 (SM58hh, plus lav/bodypack) J50 Band	4 countrymen E6 headsets
2	Shure UR2 UHF-R transmitters w/ KSM	9 - capsules
1	Shure UR-4D Diversity 2-channel receiver	400 – hz range
1	Sennheiser ew-100 wireless handheld	
Condenser Microphones		
2	AKG C 414-XL-IIST	pair w/ accessories
2	AKG SB-300B w/CK 91 cartridges	w/ accessories
4	Beta 98S	w/ accessories + mounting hardware
2	SM-81 LC	w/ accessories

Dynamic Microphones		
Quantities	Type	Notes
3	Shure SM57 LC	
2	Shure Beta 91A	
4	Shure Beta 58A	w/ accessories
4	Shure Beta 57A	w/ accessories
1	Shure Beta 52A	w/ accessories
3	Shure SM 58-LC new	w/ accessories
1	SM 58	vintage
1	Shure SM 58-S - PG58	switched
2	SM 57-LC	w/ accessories
Antenna Distribution Systems		
1	Shure UA845UWB	
1	Shure UA845	

Clear-Com	
Clear-Com permanent access points throughout the theatre. Clear-Com Headsets + Belt packs - XLR Inputs. HME Digital Wireless Headsets + Belt packs	

Audio Equipment

Assisted Listening Devices

In accordance with Americans with Disabilities Act (ADA), assisted listening devices are available at all events through our Front of House Staff.



Williams Sound 1-channel Receiver with OLED display and Autotune
Digitally synthesized for exceptional audio clarity and stability



Williams Sound Folding Headphones Mono 3.5 mm Plug



Neck loop Induction Coil with 18-inch Cord

House Lighting

Lighting Fixtures & Equipment

Console & Dimmers			
Equipment	Details	Additional Equipment	Notes
Console	1 – ETC Element 500 Console	2 -Touch Screen Monitors	Generally, Setup Stage Left
Dimmers	ETC Sensor Dimmer Rack		Installed 2012

Lighting Fixtures	
House Inventory	Equipment Details
96	ETC Source 4 Pars (Very Narrow, Narrow, Medium, and Wide Lenses Available)
24	10° ETC S4 Leko
24	19° ETC S4 Leko
24	26° ETC S4 Leko
24	36° ETC S4 Leko
24	50° ETC S4 Leko
8	(CYC LIGHTS) Chauvet Professional Ovation B-2805FC Full Color LED Battens
<i>*16-6 Circuit Lamp Bars</i>	
<i>*All Fixtures Include C-Clamp, Color Frame and Safety Cable</i>	
<i>*120 – Size “A” Pattern Holders</i>	

Cable	
House Inventory	Equipment Details
11	50' 12/14 multi
8	75' 12/14 multi
8	100' 12/14 multi
1	100' DMX
<i>*Assorted Adaptors, Breakouts etc.</i>	

Spotlights		
House Inventory	Equipment Details	Notes
2	Lycians 1290s	Power, Gel Frames, Located 153' from Downstage Centerline

PLEASE NOTE, FOH TO STAGE IS A MINIMUM OF 250' OF CABLE

House Lighting

Hanging Positions

Hanging Positions			
Position	Details	Available Circuits	Distance from Downstage Center
Box Booms	Two box booms are located balcony left and right. Currently our rep plot has them outfitted with 8 ETC Source4 10° 750w fixtures.	12 stage-pin per side 7 horizontal pipes avail. Circuits 1-12 HL Circuits 25-36 HR	87'
Balcony Rail	Currently our rep plot has the rail outfitted with a general stage/apron wash as well as our house projector which is hung at center. Please inform us of anything you would like to hang as we do have weight restrictions.	12 stage-pin circuits available	55'
Onstage Drops	Three (3) drop boxes per side from grid iron SL + SR. Socapex multi-connectors, terminate to house dimmer racks.	Four (4) breakouts of stage-pin available per drop	N/A
Floor Pockets	Three (3) pockets per side SL + SR and one (1) center	Three (3) circuits per pocket	N/A

Please Note There Is No Cove Position in Our House

House Lighting

FOH Lighting Positions

FOH Box Booms (HL + HR)

Each boom holds the below fixtures from our plot.

FOH Balcony Rail

The FOH balcony rail holds the below fixtures from our plot.



FOH Box Booms HL + HR		FOH BALCONY RAIL	
FROM TOP TO BOTTOM. EACH SIDE HOLDS THE FOLLOWING:		FROM LEFT TO RIGHT, THE BALCONY RAIL HOLDS THE FOLLOWING:	
HOUSE LEFT	HOUSE RIGHT		
#1 ETC S4 10° 750w	#1 ETC S4 10° 750w	#1 ETC S4 26° 750w	#9 ETC S4 10° 750w
#2 ETC S4 10° 750w	#2 ETC S4 10° 750w	#2 ETC S4 26° 750w	#10 ETC S4 26° 750w
#3 ETC S4 10° 750w	#3 ETC S4 10° 750w	#3 ETC S4 10° 750w	#11 ETC S4 10° 750w
#4 ETC S4 10° 750w	#4 ETC S4 10° 750w	#4 ETC S4 26° 750w	#12 ETC S4 26° 750w
#5 ETC S4 10° 750w	#5 ETC S4 10° 750w	#5 ETC S4 10° 750w	#13 ETC S4 10° 750w
#6 ETC S4 10° 750w	#6 ETC S4 10° 750w	#6 ETC S4 10° 750w	#14 ETC S4 26° 750w
#7 ETC S4 10° 750w	#7 ETC S4 10° 750w	#7 ETC S4 26° 750w	#15 ETC S4 26° 750w
#8 ETC S4 10° 750w	#8 ETC S4 10° 750w	#8 ETC S4 26° 750w	#16 ETC S4 10° 750w
		HOUSE PROJECTOR @ C	

Video & Projection

House Video Equipment

Video Equipment		
Projector	Christie 14K Digital Projector WU14K-M	Mounted on Balcony Rail
Lenses	1.5-2.0 SX Roadster Lens	1.45-1.8 HD Roadster Lens
Switcher	Roland V-40HD Multiformat Switcher	With monitors and MacBook Pro laptop
Screens	10' x 17' Da-Lite Deluxe Dual Vision Screen	Available accessories: Hanging kit, Freestanding legs, Black dress kit. Front or rear projection.
	36' x 22' Da-Lite Matte Projection Screen	Permanently hung on lineset #5, 4'-4" from plaster line
Accessories	A variety of HDMI, SDI, DVD, Blu-ray, and adapters available	Please note that our SDI cable will not transmit Blu-ray because of copyright



36' x 22' Da-Lite Matte Projection Screen



10' x 17' Da-Lite Deluxe Dual Vision Screen

House Soft Goods

Quantities	Description (Fixed*)
1	Royal purple main drape, 28'h x 28'w (opening: guillotine or traveler) *
1	Royal purple fixed valance at a 23'-7" trim*
1	Royal purple valance/border downstage of main drape (adjustable trim) *
6	6 Pairs of Black Legs 28'h x 13'w
4	Black Borders
1	1 pair of black panels 28'h x 28'w (set at midstage (opening: guillotine or traveler)
1	Black sharks tooth scrim 28'h x 52'w
2	Natural, seamless muslin Cyclorama
** All available in-house soft goods are rated "IFR" (Inherently Flame Retardant)**	

Risers, Platforms & Staging

Quantities	Description
4	Wenger Choral Risers 3' x 8' with 8" legs
4	Wenger Choral Risers 3' x 8' with 16" legs
4	Wenger Choral Risers 3' x 8' with 24" legs
8	Wenger signature Choral Risers with 4-step capacity



Dance Floor

Quantities	Description
7	Rosco Brand Marley Dance Floor. Black on one Side, Grey on the other
Fully Covers the Stage when all Sections are used	



Orchestra Shell & Accessories

The VETS is the principal home of the Rhode Island Philharmonic Orchestra & Music School; therefore, we have the privilege of having the following equipment and accessories available. If interested, please let us know during your advance. This will incur an additional labor call.

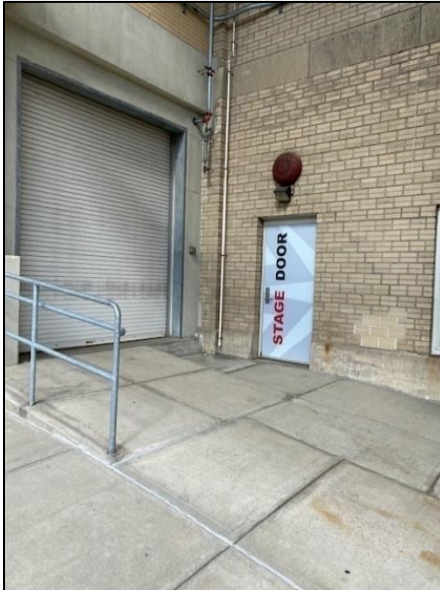
- Deployable Wenger "Diva" acoustic symphony shell with accompanying Wenger "concert master" roof.
- When not in use, the roof is flown out on 4 separate line sets; these are permanent.

- Shell walls are stored in loft above stage on the SL side and otherwise do not interfere with show operations.
- 73 x Wenger “symphony” orchestra chairs
- 5 x Wenger “symphony” cello chairs
- 72 x music stands (no lights available)

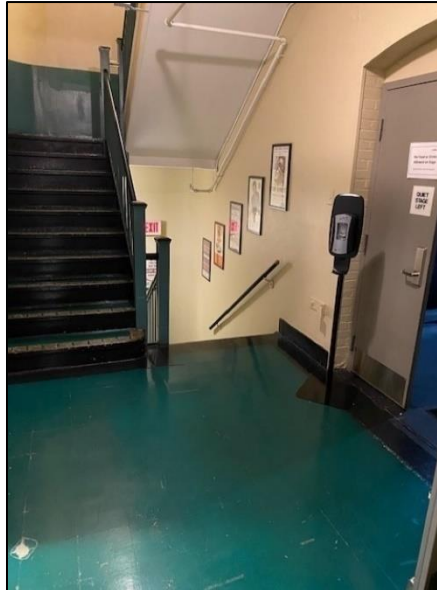


Dressing Rooms & Backstage Areas

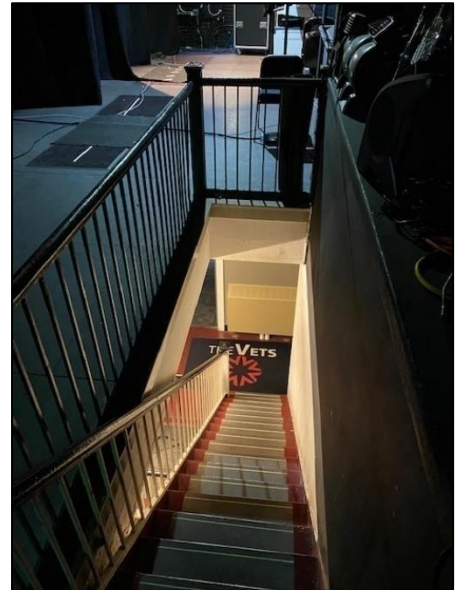
Dressing Rooms



Stage Door
Located on Park Street
(Street level for freight elevator)



Stage Door Stairs to Dressing Rooms and Stage Left

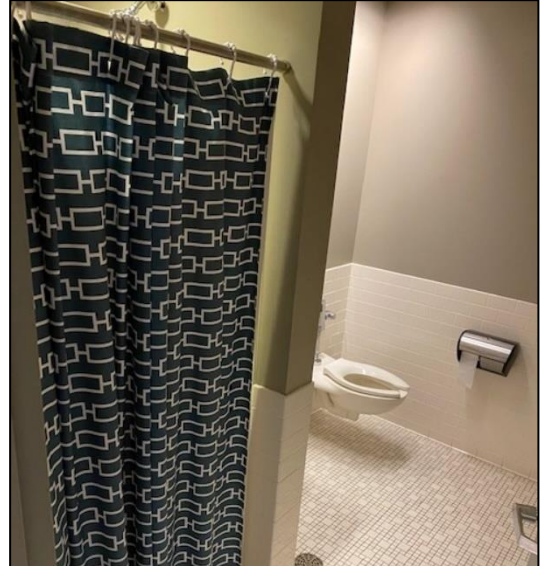


Stage Right Stairs to Greenroom, Catering, Fitness Center and Wardrobe/Laundry





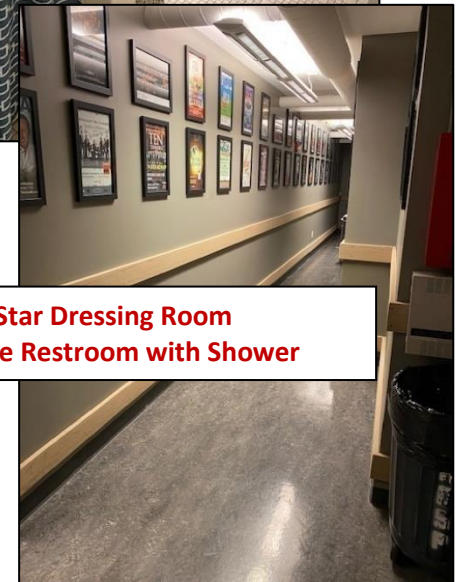
Star Dressing Room
stage level



Star Dressing Room
Private Restroom with Shower



3rd Floor Dressing Room Hall,
5 Star and 4 Chorus Rooms



2nd Floor Stage Left to Right
Crossover

2nd Floor Dressing Room Hall,
5 Star and 4 Chorus Rooms

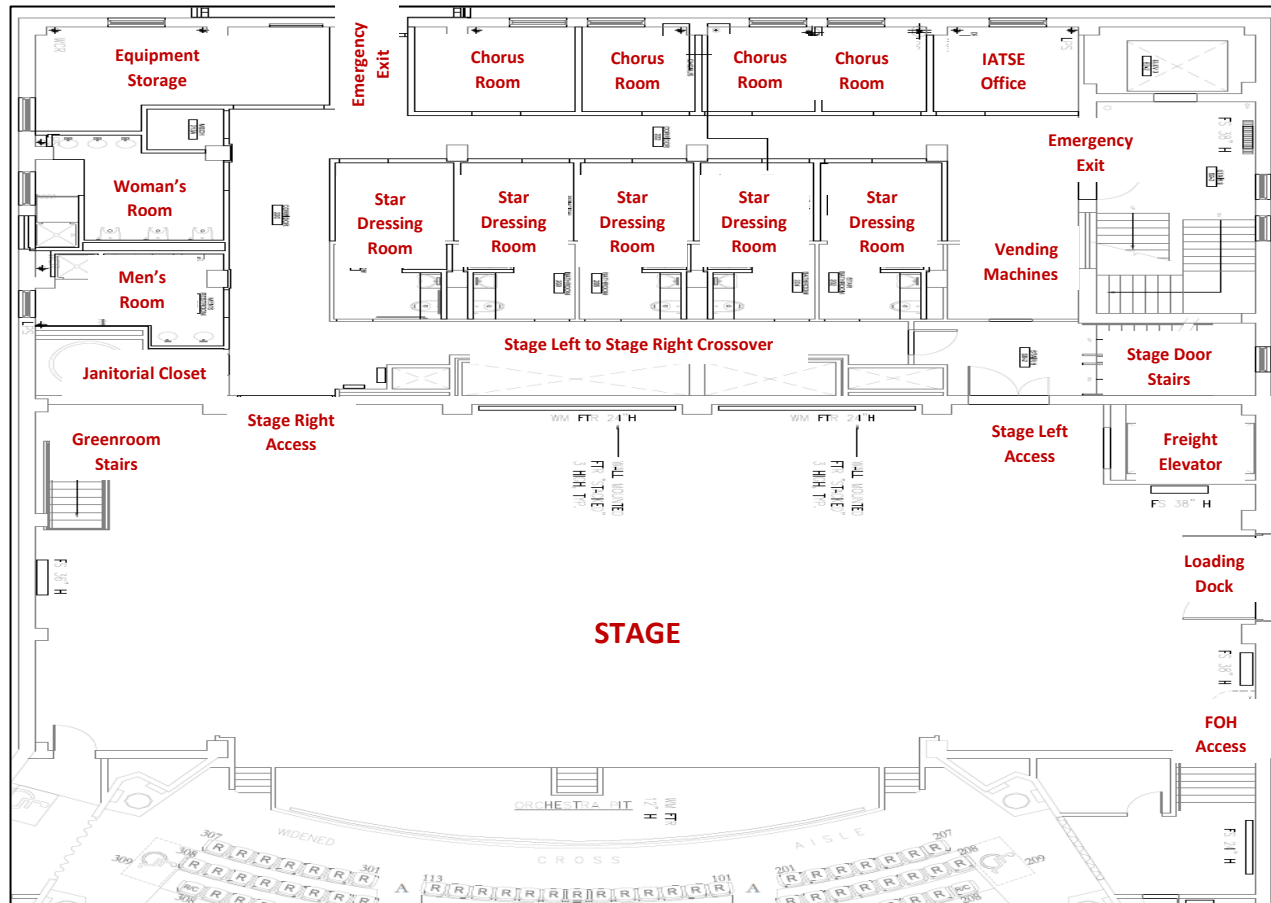


2nd Floor Chorus Room



**2nd Floor Public Restrooms
On Stage Right**

Dressing Rooms & Backstage Areas Second Floor (Stage Level)



Second Floor Backstage Map

Stage Door Stairwell

This stairwell leads to and from the marked Stage Door on Park St.

Star Dressing

There are five, star dressing rooms on the stage level. Each has a private restroom and shower.

Chorus Dressing

There are 4 chorus dressing rooms on level 2. Each has a counter and make up mirror with lights. (Large Chorus room also doubles as a Production Office.)

Public Restrooms

Located at the end of the hallway which includes toilet stalls and an additional shower.

Loading Dock

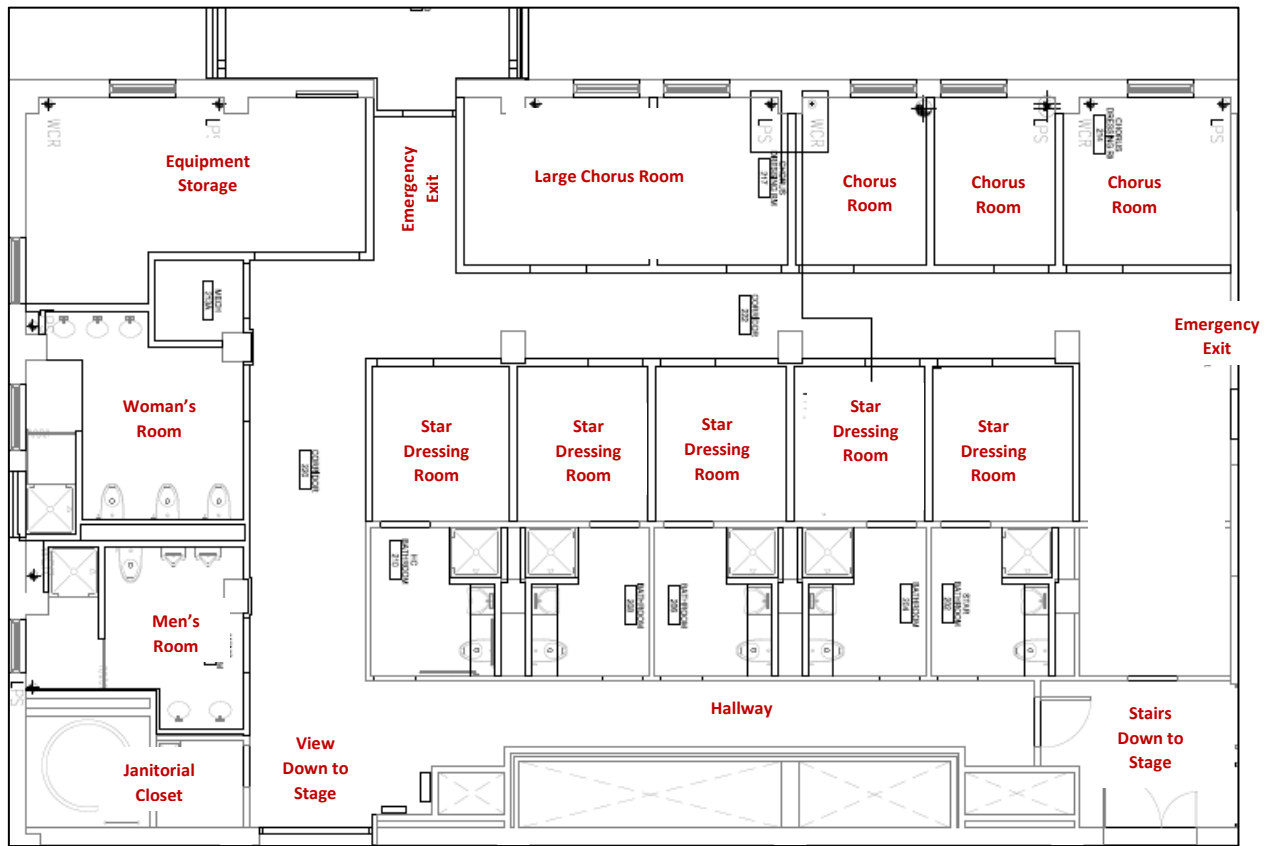
Our dock fits 1 semi; please refer to the Bus & Truck Parking section for more information.

Freight Elevator

Elevator with access to Stage, greenroom, and street level

Dressing Rooms & Backstage Areas

Third Floor Layout



Third Floor Backstage Map

Stairs to Stage

This stairwell leads to and from the third floor dressing rooms and the stage.

Star Dressing Rooms

There are five, star dressing rooms on the third floor: one level above the stage. Each is equipped with private restroom with shower, counter, and make up mirror with lights. Accommodates 2-3 people each.

Chorus Rooms

There are 4 chorus dressing rooms on level 3. Each is an empty room, if you need a table or chairs, please let us know. Accommodates 4-5 people each.

Public Restrooms

Located at the end of the hallway which includes toilet stalls and an additional shower.

Dressing Rooms & Backstage Areas

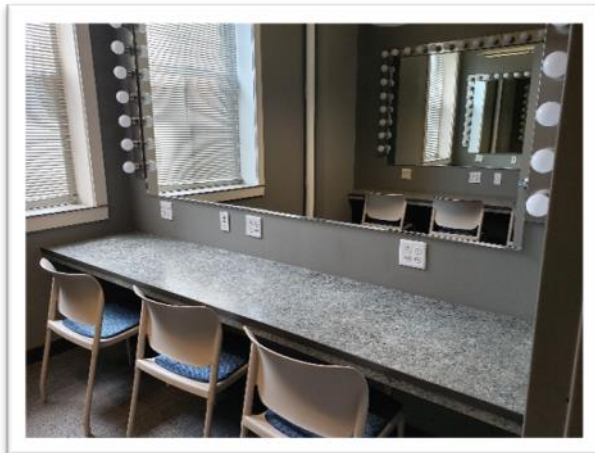
Wardrobe Room

VETS Wardrobe Room is located at the sub-stage level which is accessed via SR stairs, SL freight elevator, or street; and is equipped with the following:

- 2 high efficiency washer & dryer sets (please supply your own laundering supplies)
- A large deep double sink is available for hand washing.
- 2 ironing sets
- 2 steamer
- 4 rolling wardrobe racks



Production Office



Production Office is located backstage right - stage level; it is equipped with the following.

- 2 wall-to-wall tables
- 6 chairs
- respectively, this may be used as a dressing room for larger tours.

Greenroom

The Greenroom (43' x 40') is located at the sub-stage level, which is accessed via SR stairs, SL freight elevator, or street, and features:

- 3 additional unisex restrooms
- pantry, sink, glass front refrigerator, 80lb ice machine
- can be set for dining with chairs and tables
- foosball table
- leather couch with accompanying chairs, & marble coffee table If sound or video feed is needed for greenroom, please delineate in advance, as this will need to either be provided by tour, or equipment rented.
- Access to the Orchestra Pit is in the greenroom



Dressing Rooms & Backstage Areas

Fitness Center



The VETS Fitness Center is located just off the Green Room for artists and visiting crews use. It features the latest in digital fitness equipment including a Peloton Bike, Hydrow Rower, weights, and other training equipment.



Special Effects Rules & Regulations

Due to state laws and building requirements there are specific guidelines that must be followed if any kind of special effects are being used at The VETS.

Our stage is equipped with a deluge firewall system and we have beam smoke sensors as well as standard smoke detectors. These sensors **MUST** be turned off before any atmospheric effects are tested or run. Our fire panel may **ONLY** be turned off by City Fire Command Details who are generally booked 1.5h prior to advertised event start time for most events.

If you need to use your effects earlier in the day for a lighting focus, rehearsal or sound check you must let us know at least 48 hours in advance to ensure the appropriate arrangements are made with the City of Providence. Additional expenses will be incurred for this. Without advance notice we cannot guarantee we can test prior to the normally scheduled showtime calls.

Haze | Fog

As per Rhode Island State law; No haze or fog may be run in the building without a Fire Command Detail present to disable and monitor our panel. Please advance in detail your haze or fog needs so that we can plan accordingly. The venue's alarm system is intertwined with the hotel next door, if the atmospheric effect becomes too thick, it may impact the alarms in both venues. We will work with you on a case-by-case basis to address any concerns.

Pyrotechnics

As per Rhode Island State law if there is an open flame (open flame devices are defined as candles, torches, butane burners or any other flame producing device) you will need to download and fill out the proper pyrotechnics permits found at: www.fire-marshal.ri.gov/testingforms/forms.php (discuss during advance) - some limitations will apply.

Dry Ice

Dry ice is allowed, please be reminded to bring your own coolers and gloves.
Local vendor information available upon request.

Confetti

With advance approval, The VETS allows paper or eco-friendly confetti | NO MYLAR confetti allowed. Additional cleaning fees apply.

Snow | Bubbles

If snow or bubble effects are used during your event details of the chemical used must be advanced with our Technical Director for review and approval to ensure damage is not incurred to The VETS seats or equipment.

Strobe Lights

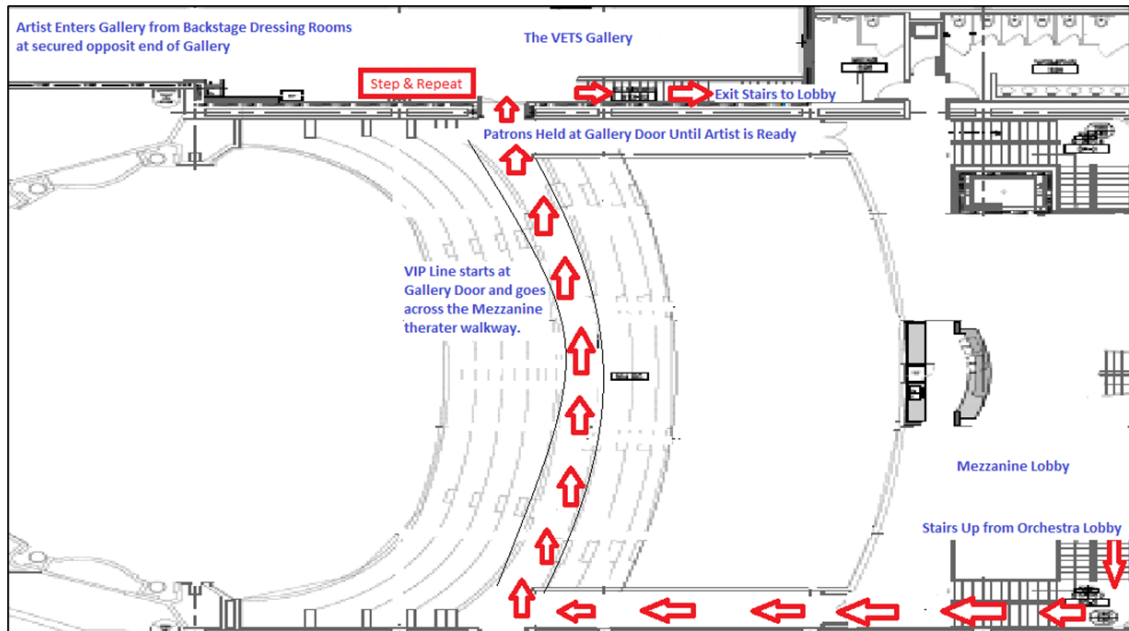
If using strobing effects, please denote this during advance so that we may inform our patrons with entry signage. Please let us know if you have your own tour signage to post.

Meet & Greet & VIP Experiences

All meet & greet and VIP Experiences need to be arranged in advance with The VETS General Manager.

Standard Post-Show Photo

The VETS Gallery



Reception or Party Style

The VETS Loft

Reception Room with private Restrooms & Prep Kitchen. Can Accomodate up to 125 people

