

THE VETS TECHNICAL PACKET



ONE AVENUE OF THE ARTS
PROVIDENCE, RI 02903
WWW.THEVETSRI.COM
T. 401.222.1467
F. 401.222.1466



Welcome

Welcome to The VETS!

We would like to welcome you to Rhode Island's premiere theatrical, performance, and event spaces. Our goal is to make your experience at The VETS as smooth and productive as possible. This Technical Packet was created to provide you with a better insight into what we have to offer and provide you with important information to prepare for your event.

Included within this document are venue contacts, backstage guides, loading and parking information, equipment lists, information about the building, and much more. Review our specs, gather any questions you may have, and our Technical Director will review everything with you during the advance calls.

Here at The VETS, we pride ourselves on working together as a cohesive team from administrators to crew, front of house, to operations, from top to bottom. Our audiences expect a great experience from us, and we take pride in delivering beyond those expectations.

If there is any way that we can assist you in the planning of your event or to answer any questions, please feel free to reach out via email to our Technical Director at nmuzzi@pfmcorp.com or by phone at 401-222-1467. We look forward to meeting you and making your experience as memorable as possible!

-The VETS

Table of Contents

Welcome	1
General Information.....	4
Venue Contacts & Package Mailing Address	4
General Event Procedures & Policies.....	5
GBAC STAR Facility Accreditation	6
Loading Dock & Freight Elevators	7
Parking & Directions	8
Driving Directions.....	9
Venue Entrances	10
Guest & Patron Parking.....	11
WI-FI Information.....	12
Lobby & Merchandise Layout	13
Seating Chart.....	14
Rigging & Measurements.....	15
Theater Measurements	15
Rigging, Motors, & Truss.....	16
Line Set Schedule	17
Audio Equipment.....	18
Speakers, Monitors, Mixing	18
Microphones & Clear-Com.....	19
Assisted Listening Devices.....	20
House Lighting	21
Lighting Fixtures & Equipment.....	21
Hanging Positions.....	22
FOH Lighting Positions	23
House Repertory Lighting Plot	24
House Repertory Dimmer Patch	25
House Repertory Magic Sheet	26
Video & Projection	27
House Video Equipment	27
House Soft Goods	28
Risers, Platforms & Staging.....	28

Dance Floor	28
Orchestra Shell & Accessories	28
Dressing Rooms & Backstage Areas	29
Dressing Rooms.....	29
Second Floor (Stage Level)	31
Third Floor Layout	32
Wardrobe Room.....	33
Production Office	33
Greenroom.....	33
Fitness Center	34
Special Effects Rules & Regulations	35
Haze Fog	35
Pyrotechnics.....	35
Dry Ice	35
Confetti	35
Snow Bubbles	35
Strobe Lights	35
Meet & Greet & VIP Experiences	36
Business Directory	37
Catering Services.....	37
Local Business Directory	37

General Information

Venue Contacts & Package Mailing Address

Venue Directors & Managers			
General Manager	Daniel Schwartz	dschwartz@pfmcorp.com	401-222-1467
Technical Director	Nina Muzzi	nmuzzi@pfmcorp.com	401-222-1467
Operations Director	Steve Pereira	spereira@pfmcorp.com	401-222-1467
Marketing Director	Michael Gravison	mgravison@pfmcorp.com	401-222-1467
Box Office Manager	Tara Edwards	tedwards@ppacri.org	401-421-2787
Office Manager/Hotels	Doreen Vitale	dvitale@pfmcorp.com	401-222-1467
Security Director	Dave Luongo	dluongo@ppacri.org	401-421-2997
House Manager	Pat Lynch	plynch@pfmcorp.com	401-222-1467
Assistant House Manager	Deb Correia	dcorreia@pfmcorp.com	401-222-1467

IATSE Local #23 Department Heads & Local 830 Wardrobe Heads			
Business Agent Local #23	Charlie Ryan	cryan@iatse23.org	508-216-6071
Head Carpenter Rigger	Jared Brackett	jaredbrackett89@yahoo.com	401-363-2121
Head Electrician	Tony Caramello		
Head Audio	Michael Moore	mdmoore14@gmail.com	401-413-0207
Head of Props	Richard Rossi	chardrr@yahoo.com	401-447-7229
Wardrobe Business Agent	Debbie Voccio	debbievoccio@yahoo.com	401-527-5009
Wardrobe Steward	James Ferreria	ribeef11@aol.com	774-991-2624

MAILING ADDRESS FOR DELIVERIES AND PACKAGES

Please send all packages to the following address and ensure each package has the show or artists name listed on the label. Packages that arrive prior to event day will be held in the Administration Office and brought to the Production Office at Load-In.

The VETS
83 Park Street
Providence, RI 02903

Attn: Artist or Show Name

General Information

General Event Procedures & Policies

Lobby Doors	1 Hour before advertised event time (unless otherwise specified)
House/Theater Doors	30 minutes prior to scheduled showtime (unless otherwise specified)
Box Office	Closes after intermission or 30 minutes after showtime.
Curfew	11:30pm for backstage guests, additional labor charges may be incurred for time periods beyond 11:30pm.
First Aid & AED	First-aid cabinet and AED are both located off stage left in the crossover hallway.
Credentials	All show personnel must always have valid credentials, or they may be stopped by security.
Patrons Standing or Dancing	For concerts if a patron wants to stand at their seat that is ok. If most of the audience is sitting and they are disturbing others, then they will be directed by our house staff to an appropriate area. Under no circumstance can people block aisles, crowd the stage, or walk towards an area they do not have a ticket for. RI Fire Code requires aisles always remain free and clear.

CAMERA POLICY

Unless Otherwise Discussed:

*For concerts, The VETS allows cell phone cameras, no professional cameras, and no flash.

*The VETS does not allow cameras or recording of any kind for theatrical presentations or Philharmonic Concerts.

General Information

GBAC STAR Facility Accreditation



The VETS has achieved GBAC STAR facility accreditation ensuring that we are implementing the strictest cleaning and infectious disease prevention protocols.

- When you enter a GBAC STAR Accredited Facility, it's what you can't see that counts. A facility may look and smell clean, but that doesn't necessarily mean that the space has been properly cleaned and thoroughly disinfected. The GBAC STAR seal is reserved only for facilities that maintain the right protocols for cleaning and indicates that the space has been disinfected to higher standards.
- When you see the GBAC STAR seal, you'll have the assurance and confidence that the facility staff are properly trained and working hard to renew your trust in building cleanliness and safety.
- GBAC STAR is the industry's only outbreak prevention, response, and recovery accreditation and establishes requirements to assist facilities with work practices, protocols, procedures, and systems to control risks associated with infectious agents, such as SARS-CoV-2, the virus responsible for COVID-19.
- "GBAC STAR is the gold standard of safe facilities, providing third-party validation that ensures facilities implement strict protocols for biorisk situations," said GBAC Executive Director Patricia Olinger. "Accreditation empowers facility owners and managers to assure workers, customers, and key stakeholders that they have proven systems in place to deliver clean and healthy environments that are safe for business."

General Information

Loading Dock & Freight Elevators



Elevated Loading Dock: At truck height featuring a hydraulic leveler directly onto stage left. Width of the dock clearance is 10' 6" wide x 14' high. We also have an inhouse ramp that we can use to bring in equipment.

Due to Rhode Island Fire Code, the trailer can remain in the loading dock during the performances however the cab must be detached and parked outside the facility due to necessary egresses being blocked.

Freight Elevator: Located on Park Street, going down the hill. From street level elevator goes to greenroom (under stage) as well as stage level on USL. Elevator dimensions: 7'7" deep x 5'10" wide. Elevator door height: 5'10" wide x 6'8" high.

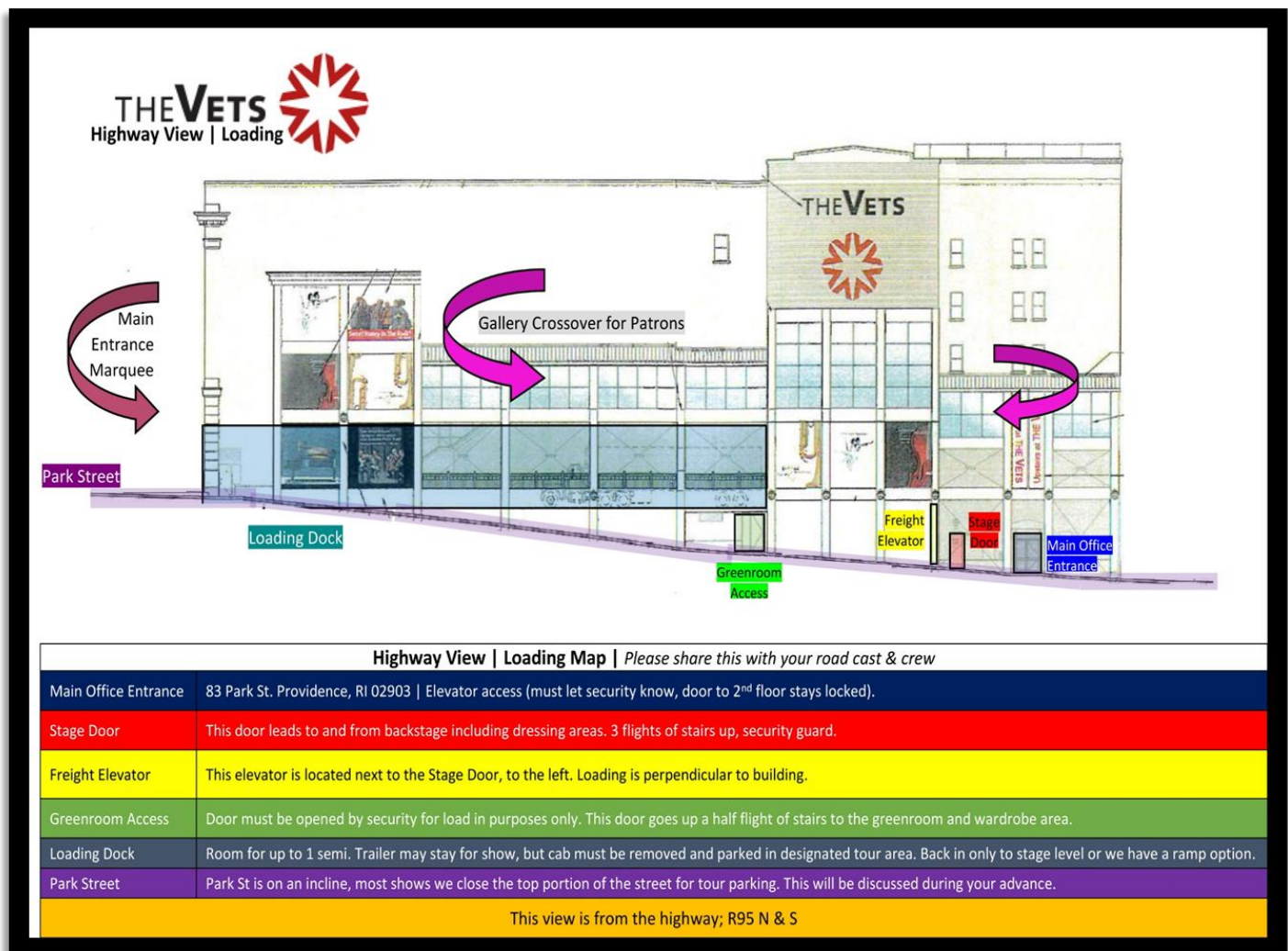


Trolley Hoist:

Featured immediately inside the loading dock, on stage, is a 3-ton trolley-hoist motor mounted on an I-beam for assistance stacking and un-stacking cases.

General Information

Parking & Directions



- There is the ability to park one (1) 53' trailer on the SL Loading Dock.
- For additional tour parking, Park Street is available to park tour vehicles. From our front circle to the traffic light at Smith Street.
- Long Term truck parking is available at Exit 5B on Interstate 95. This is approximately 20 minutes south of the venue and Providence.

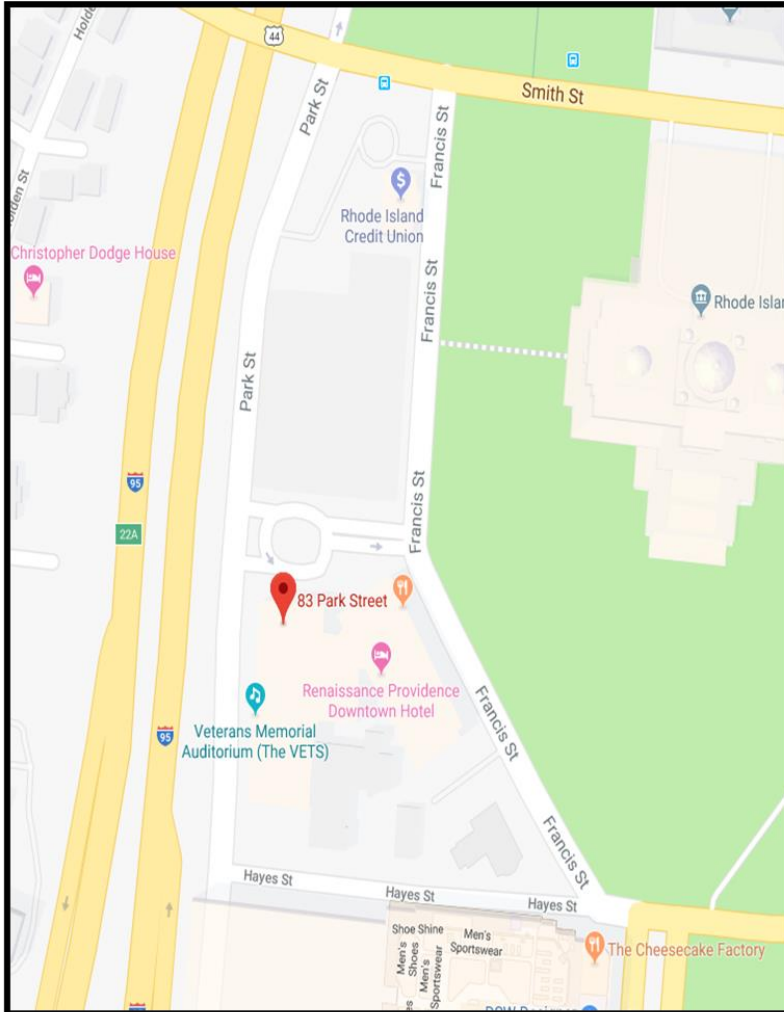
Due to Rhode Island Fire Code the trailer can remain in the dock during performances however the cab must detach and park outside the facility (discuss parking during advance).

- It may be necessary to close some of the surrounding streets for tour parking needs. This will be discussed in your advance process. Please let us know roughly what time your caravan will arrive/depart from the venue so that we pull the proper permits.

No Shore power or water hook ups are available at this time; however, you may run a generator.

General Information

Driving Directions



From Points North

- I-95 South to Exit 22A-22B – 22C for RI-10 W/Providence PI towards US-6W
- Keep right to continue Exit 22C
- Turn right onto Providence PI
- Providence PI turns slightly left and becomes Park St.
- The VETS will be on your right

From Points South

- I-95 North to Exit 22A-B-C
- Take Exit 22A-B-C for US-6 W/RI 10 W towards Hartford CT
- Keep right to continue on Exit 22C, follow signs for Providence PI and merge onto Providence PI
- Providence PI turns slightly left and becomes Park St.
- The VETS will be on your right

From Points East

- I-195 W to
- Keep right to continue US-6 W
- Merge onto I-95 N/US-6 W
- CONTINUE – From Points South

From Points West

- US-6E to Downtown Exit
- Take Dean St. Exit from US-6 E
- Continue Dean St. Take right onto Providence PL
- CONTINUE – From Points South

General Information

Venue Entrances



Upon entering the area, you will see the **Main Entrance** to The Vets.

Note the **Loading Ramp*** to the right. This is for loading and unloading tractor trailer trucks. Once your truck(s) is unloaded please have your driver remove the cab and park it in the designated area.

Stage Door is marked as such; staff, crew, and talent will enter through this door prior to main entrance being open.

Bus & Trailer Cab Parking is area between Smith St. and front entrance of The Vets. Parking will be designated via advancement with Technical Director.

Main Entrance is as shown in photo above.

The **Gallery** is the general public cut through from Park St. to the main lobby.

Loading Dock* is as shown in photo above.

Stage Elevator* is used as a secondary loading location.

Stage Door is marked as such; staff, crew, and talent will enter through this door. (3 flights up to stage)

Park Street Entrance is used by the general public to enter building.



General Information

Guest & Patron Parking

Guest Parking

Mall Parking | Secure paid parking is available at the Providence Place Mall North Entrance, directly behind The Vets at a rate of \$2.00 for the first 5 hours.

To exit the lot on foot, take the north elevators or stairs located at the rear of BOSCOV to level “B”. This will bring you to street level directly behind the theater. Proceed north up the sidewalk either side to the theater front entrance.


VETS Lot | The VETS parking lot is open for most shows on a first come first serve basis and is \$15.00 per vehicle.

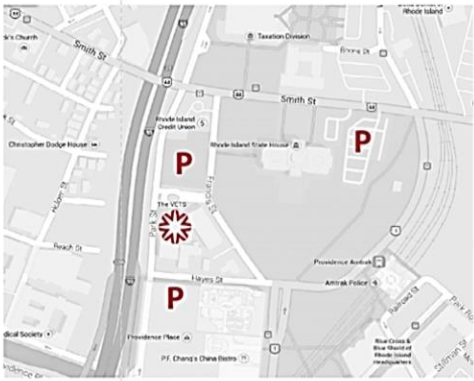
Handicapped Parking | Handicapped parking is in the front of the theater; spots are first come first serve.

Free Parking | Free parking is available in the State of Rhode Island lots on Smith Street. On-street parking is available on Francis and Smith Streets.

Parking Information

- The VETS lot located directly in front of the venue is \$15. Entrance to the lot is on Park Street.
- The Providence Place Mall garage is located directly behind The VETS. Parking is \$2 for the first 5 hours.
- Free parking is available in the State House parking lots on Smith Street (VETS guests are allowed access to this lot during VETS events regardless of signage saying state house employees only).
- On-street metered parking is available on Francis and Smith Street.





General Information

WI-FI Information



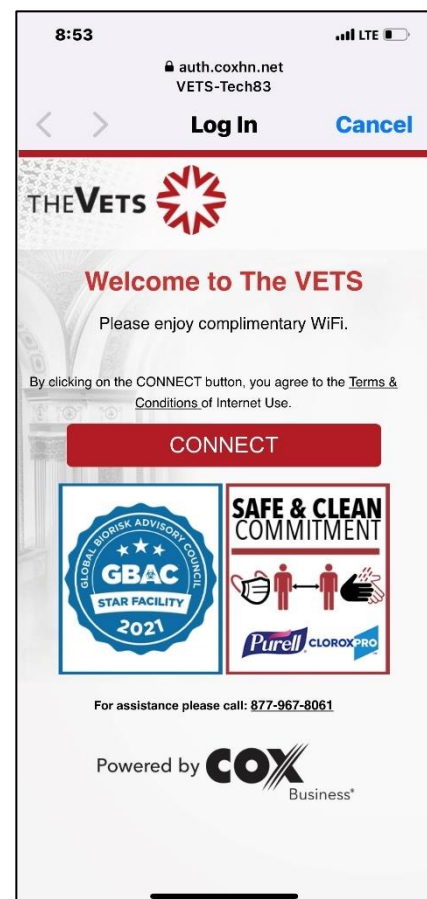
The VETS has partnered with Hospitality Network (HN), an affiliate of Cox Business to provide a complete Wi-Fi network at VETS. HN is the industries leading communications company with venues across the country such as the new T-Mobile Arena in Las Vegas, and numerous casinos, hotels, and convention centers across the country.

Hospitality Network installed 31 Cisco 802.11ac wireless access points with simultaneous dual band enterprise grade radios. This network allows you to walk from the dressing rooms to the stage, across the theater and lobbies while staying connected the entire time as your device automatically connects from one access point to the other.

How to Connect

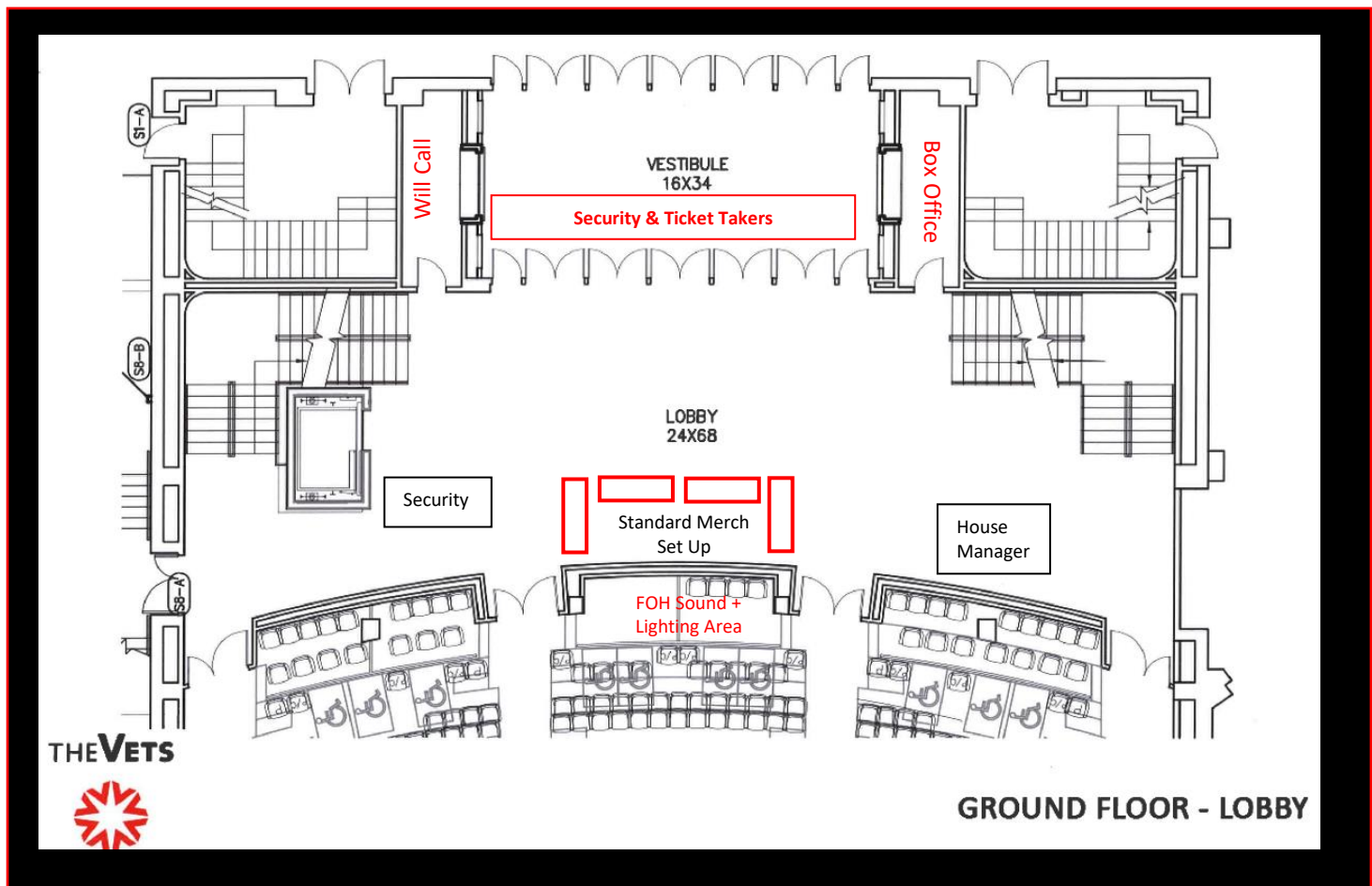
- 1.) Go to the WI-FI settings on your device.
- 2.) From the available accounts select: **VETS-Tech83**
- 3.) Enter the required password: **401 222 1467**
- 4.) A Splash Page will then appear like this picture. Select **Connect** to agree to the terms and conditions of utilizing the internet and you will then be automatically connected.

******It is important to know The VETS does not have any wired hard lines available.******



General Information

Lobby & Merchandise Layout

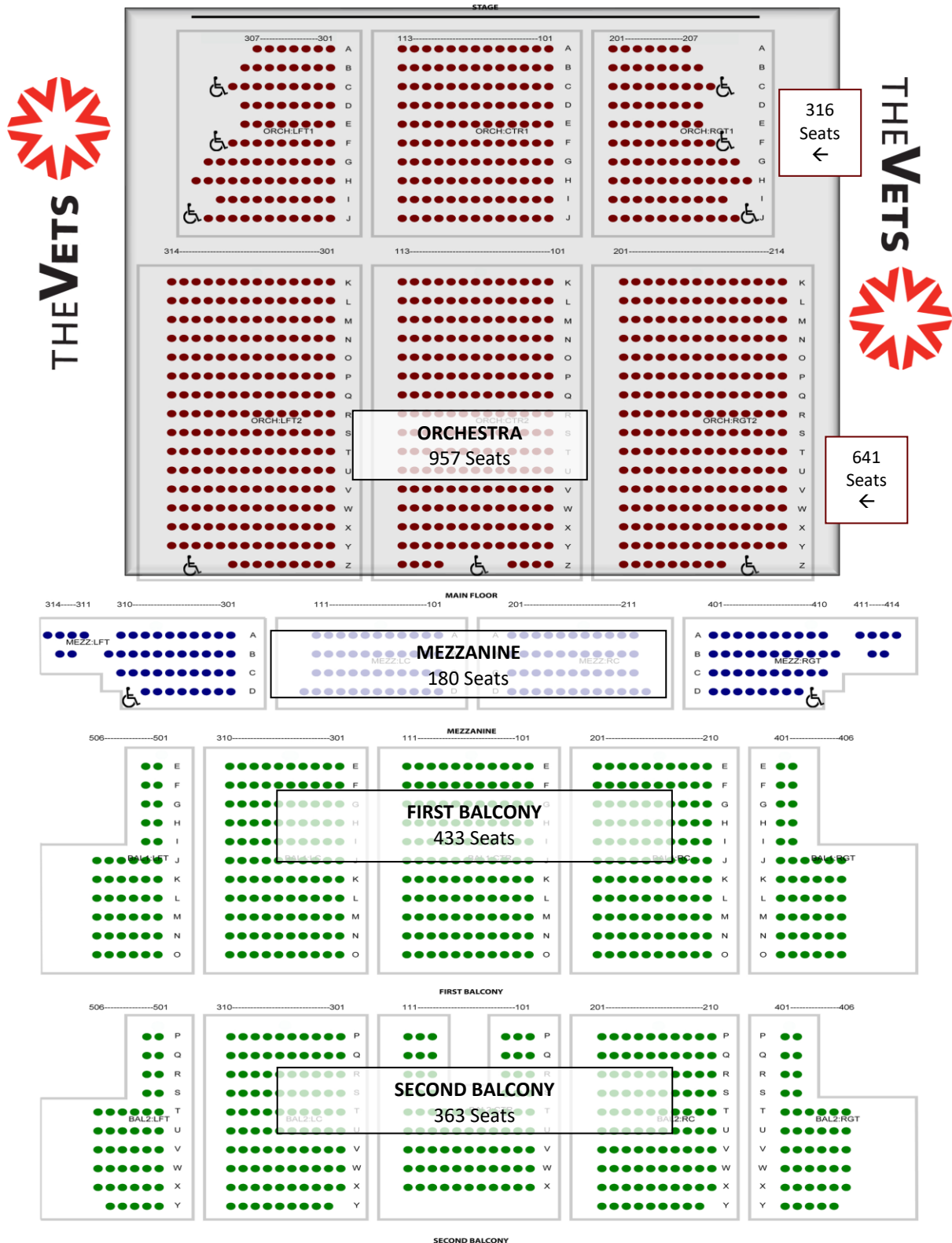


Security Our Security Supervisor on duty for your event will always be stationed at the Security Podium. Fire Detail as well as Police Detail will check in with this member of security for each event. (if applicable) This security guard will also convey any show specific rules and regulations to each member of the security team per show as well as keep in contact with backstage (security guard and house production manager) if any problems arise, there need to be any escorts, or if a runner is needed.

House Manager Stationed at the House Management podium will be either Pat Lynch, our House Manager or Deb Correia, our Assistant House Manager. They will delegate aisle captains as well as ushers to their appropriate stations, handle any patron concerns or needs as they arise, as well as communicate with backstage (house production manager) if there are any show holds, or emergencies.

General Information

Seating Chart



Rigging & Measurements

Theater Measurements

Theater Measurements	Proscenium	Width: 48' Height: 23' 7" Measurement to fixed valance
	Stage	Total Width, wall to wall: 85' Fire Curtain to back wall: 39' 6" Total Depth, lip to wall: 50'
	Wings	Stage Left: 24' (loading door & freight elevator) Stage Right: 13' (stairs to greenroom)
	Grid	Height: 65' 3" Stage to Loading Rail: 53'
	Apron	Depth: 3' 1" downstage of plaster line
	Auditorium (Measurements to DS centerline)	From Projection Booth: 153' From Box Booms: 55' From Balcony Rail 66' Mezz overhang: 45' From FOH Mix Position: NOTE snake pull to stage is 250' House width, wall to wall: 72' From Orchestra level seating: 89'
	Orchestra Pit (curved front 42' x 10')	Full matching pit deck / cover is in place for most events extending the DS performance area and eliminating the gap between artist & audience. Arrangements must be made in advance if this needs to be removed for traditional orchestra pit use, seating (25) or ballet. Removal requires an 8h labor call for the removal & restore.



Seating Capacity	Total: 1,933
Orchestra Pit: No Available Seating	Mezzanine: 180
Orchestra Level: 957	First Balcony: 433
A reduced audience configuration is also available, which is Orchestra Level only. Please inquire upon booking: 975 seats.	Second Balcony: 363
	Total ADA Seats: 18

Rigging & Measurements

Rigging, Motors, & Truss

FOH RIGGING POINTS

WE HAVE 6 FOH HANGING POSITIONS.

House Left **A** is 9'-4" from CL

House Left **B** is 14'-3" from CL

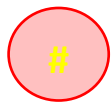
House Left **C** is 19' from CL

HR MIRRORS HL

House Right **A** is 9'-4" from CL

House Right **B** is 14'-3" from CL

House Right **C** is 19' from CL

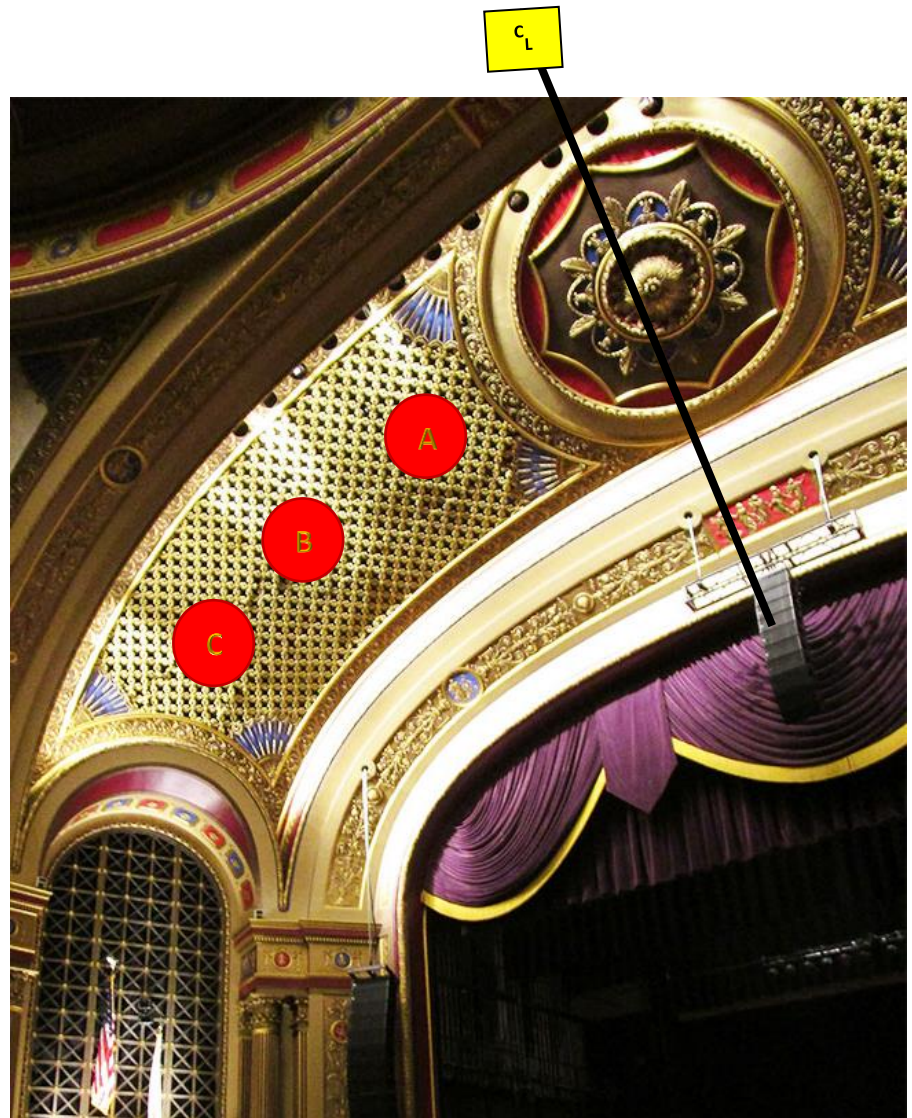


Denotes FOH
Hanging Points

STAGE RIGGING NOTE

Rigging points on stage are center, running up and down stage and every 7'-6" from center. (Well steel only, no midpoints unless bridled)

Please inquire about the amount of weight our overhead grid can support, as there are limitations.



FLY RAIL - SR	48 LINE SETS – UPRIGHT DOUBLE PURCHASE ARBOR SYSTEM		FLY-RAIL LOCATED @ 15' FROM DECK LOADING GALLERY @ 53' FROM DECK
	BATTEN LENGTH: 52'		1,2000LB CAPACITY PER BATTEN
MOTORS	6 x CM 1-TON CHAIN MOTORS		RIGGED FROM MAIN GRID 65'-3" FROM DECK
	WELL STEEL IS CENTER AND 7'6" LEFT AND RIGHT POINTS BETWEEN THESE MEASUREMENTS WILL NEED TO BE BRIDLED.		
TRUSS + BOOMS	40 – 12: SIDE ARMS		8- 16' BOOM PIPES, 50LB. BASES, AND TIE OFFS.
	10 x THOMAS GENERAL PURPOSE TRUSS 18" x 12" x 8' SECTIONS		
ACCESSORIES + EQUIPMENT	GENIE AWP 36 LIFT	20 - 10LB SANDBAGS	32 - FIXED CHEESEBOROUGH

Rigging & Measurements

Line Set Schedule

LINE	FROM PLASTER	DESCRIPTION	NOTES
-	-4"	House valance, purple; fixed @ 23'-7"h	Fixed Permanent
1	1' 0"	Adjustable house valance, purple	Fixed Permanent
STAGE	1' 8"	House main, purple (guillotine or travels)	Fixed Permanent
2	2' 4"		
3	3' 0"	1 st electric (circuits 43-77) – Rep Plot	Fixed LX Plot
4	3' 8"		
5	4' 4"	Movie screen (36' x 22')	Fixed Permanent
6	5' 0"	Acoustic shell ceiling #1	Fixed Acoustic Shell
7	6' 4"	Black border	
8	7' 0"	Black legs	
9	7' 8"	2 nd electric (circuits 78-101) – Rep Plot	Fixed LX Plot
10	8' 4"		
11	9' 0"		
12	9' 8"		
13	10' 4"		
14	11' 0"	Black border	
15	11' 8"	Black legs	
16	13' 2"	Acoustic shell ceiling #2	Fixed Acoustic Shell
17	13' 8"		
18	14' 4"	3 rd electric (circuits 102-125) – Rep Plot	Fixed LX Plot
19	15' 0"		
20	15' 8"		
21	16' 4"	Black border	
22	17' 0"	Black legs	
23	17' 8"		
24	18' 4"	Full stage black traveler (guillotine or travels)	Fixed Permanent
25	19' 8"		
26	20' 4"		
27	21' 0"	Acoustic shell ceiling #3	Fixed Acoustic Shell
28	21' 8"	Black border	
29	22' 4"	Black legs	
30	23' 0"		Fixed Permanent
31	23' 8"	4 th electric (circuits 126-149) – Rep Plot	Fixed LX Plot
32	24' 4"		
33	25' 0"		
34	27' 1"	4A electric (4 par bars as backlight)	Fixed LX Plot
35	27' 8"		
36	28' 4"	Acoustic shell ceiling #4	Fixed Acoustic Shell
37	29' 0"		
38	29' 8"	Black border	
39	30' 4"	Black legs	
40	31' 0"		
41	31' 8"	5 th electric (circuits 150-179) – Rep Plot	Fixed LX Plot
42	32' 4"		
43	33' 8"	Black legs	
44	34' 4"	Seamless natural white muslin Cyc w/bottom pipe	
45	35'	Full stage black	

****Please Note: If a full strip is needed on stage; all line sets will be gridded, unless discussed in detail during advance process.*****

Audio Equipment

Speakers, Monitors, Mixing

Main House System

Placement of Equipment		Type of Equipment
Main Arrays	Stage Left + Right Arrays (Hung on ½ ton motors)	24 Meyer M'elodie 12 per side
	Center Cluster (Hung on a 1-ton motor)	10 Meyer Mina
	Subs	2 Meyer HP-700
Front Fills	On front of stage or house floor if stage stairs are in use	2 Meyer Mina
Console	FOH Mix Position – 127' from stage.	Yamaha QL5 Digital Mixing Console
	MON Mix Position - SL	Yamaha M7CL Mixing Console
Snake	Located in Audio Control Room, fed via patch panels located DSL, DSR, and Orchestra Pit	DigiCo SD Rack

Monitor Speakers

Quantity	Type of Equipment
2	Meyer UM-100P powered wedges
2	Meyer UM-1p powered wedges
2	Meyer MJF-212 powered wedges
2	L'acoustic 108P powered wedges

DI | Stage Box | Pre-Amp Catalogue

	Quantity	Type of Equipment
Direct Boxes	4	Radial J48 Active Direct Boxes
	4	Whirlwind Director DI's (passive)
	4	Whirlwind IMP 2 DI's (passive)
	1	Whirlwind pcDI Stereo Computer Interface
Stage Boxes	2	Wireworks MMB 19 channel stage input boxes
	2	Wireworks MMB 12 channel stage input boxes
	2	Wireworks MMB 6 channel stage input boxes
	All necessary G-Block connectors and cables	

SNAKE PULL FROM FOH to ORCHESTRA PIT IS 250'

Audio Equipment

Microphones & Clear-Com

Wireless Microphones		
Quantity	Type	Notes
4	Shure QLXD 124/85 (SM58hh, plus lav/bodypack) J50 Band	4 countrymen E6 headsets
2	Shure UR2 UHF-R transmitters w/ KSM	9 - capsules
1	Shure UR-4D Diversity 2-channel receiver	400 – hz range
1	Sennheiser ew-100 wireless handheld	
Condenser Microphones		
2	AKG C 414-XL-IIST	pair w/ accessories
2	AKG SB-300B w/CK 91 cartridges	w/ accessories
4	Beta 98S	w/ accessories + mounting hardware
2	SM-81 LC	w/ accessories

Dynamic Microphones		
Quantities	Type	Notes
3	Shure SM57 LC	
2	Shure Beta 91A	
4	Shure Beta 58A	w/ accessories
4	Shure Beta 57A	w/ accessories
1	Shure Beta 52A	w/ accessories
3	Shure SM 58-LC new	w/ accessories
1	SM 58	vintage
1	Shure SM 58-S - PG58	switched
2	SM 57-LC	w/ accessories
Antenna Distribution Systems		
1	Shure UA845UWB	
1	Shure UA845	

Clear-Com	
Clear-Com permeant access points throughout the theatre. Clear-Com Headsets + Belt packs - XLR Inputs. HME Digital Wireless Headsets + Belt packs	

Audio Equipment

Assisted Listening Devices

In accordance with Americans with Disabilities Act (ADA), assisted listening devices are available at all events. As a result of Covid-19 we will add new disinfecting measures for the devices at the end of each event. The receiver and headphones will be sprayed and wiped with a disinfecting solution. Ear pads will be removed and discarded after each use and a new set of ear pads in sealed packages will be provided with the headphones to the next patron.

Hearing aid induction loops are also available.



House Lighting

Lighting Fixtures & Equipment

Console & Dimmers			
Equipment	Details	Additional Equipment	Notes
Console	1 – ETC Element 500 Console	2 -Touch Screen Monitors	Generally, Setup Stage Left
Dimmers	ETC Sensor Dimmer Rack		Installed 2012

Lighting Fixtures	
House Inventory	Equipment Details
96	ETC Source 4 Pars (Very Narrow, Narrow, Medium, and Wide Lenses Available)
24	10° ETC S4 Leko
24	19° ETC S4 Leko
24	26° ETC S4 Leko
24	36° ETC S4 Leko
24	50° ETC S4 Leko
8	Ovation LED Battens
<i>*16-6 Circuit Lamp Bars</i>	
<i>*All Fixtures Include C-Clamp, Color Frame and Safety Cable</i>	
<i>*120 – Size “A” Pattern Holders</i>	

Cable	
House Inventory	Equipment Details
11	50' 12/14 multi
8	75' 12/14 multi
8	100' 12/14 multi
1	100' DMX
<i>*Assorted Adaptors, Breakouts etc.</i>	

Spotlights		
House Inventory	Equipment Details	Notes
2	Lycians 1290s	Power, Gel Frames, Located 153' from Downstage Centerline

PLEASE NOTE, FOH TO STAGE IS A MINIMUM OF 250' OF CABLE

House Lighting

Hanging Positions

Hanging Positions			
Position	Details	Available Circuits	Distance from Downstage Center
Box Booms	Two box booms are located balcony left and right. Currently our rep plot has them outfitted with 8 ETC Source4 10° 750w fixtures.	12 stage-pin per side 7 horizontal pipes avail. Circuits 1-12 HL Circuits 25-36 HR	87'
Balcony Rail	Currently our rep plot has the rail outfitted with a general stage/apron wash as well as our house projector which is hung at center. Please inform us of anything you would like to hang as we do have weight restrictions.	22 stage-pin circuits available	55'
Onstage Drops	Three (3) drop boxes per side from grid iron SL + SR. Socapex multi-connectors, terminate to house dimmer racks.	Four (4) breakouts of stage-pin available per drop	N/A
Floor Pockets	Three (3) pockets per side SL + SR and one (1) center	Three (3) circuits per pocket	N/A

Please Note There Is No Cove Position in Our House

House Lighting

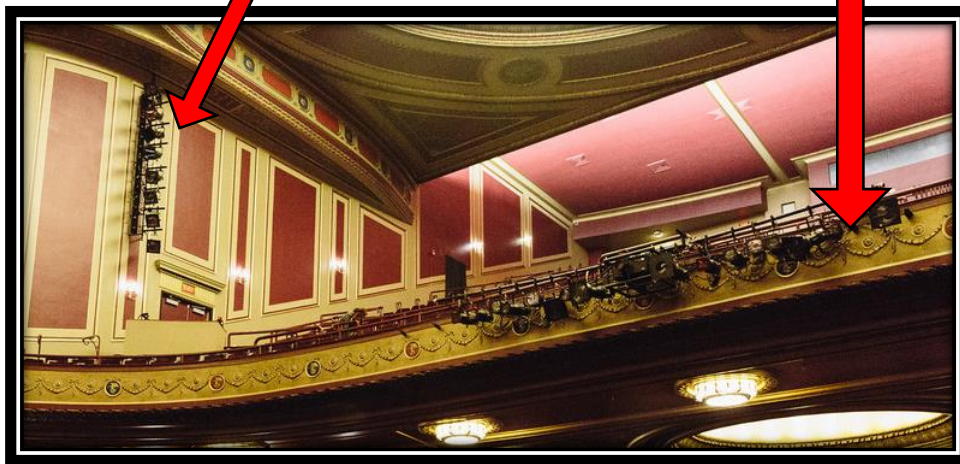
FOH Lighting Positions

FOH Box Booms (HL + HR)

Each boom holds the below fixtures from our house repertory plot.

FOH Balcony Rail

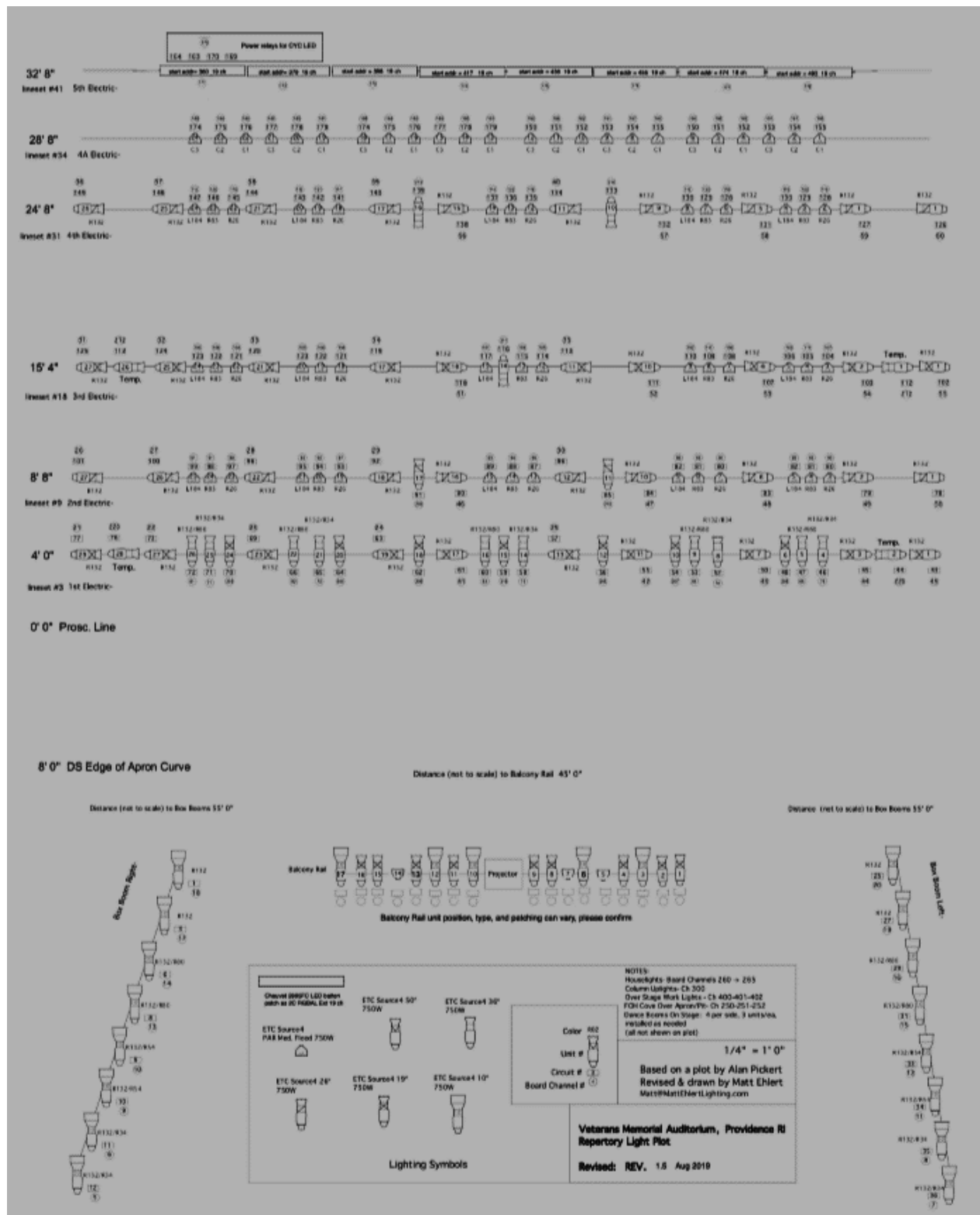
The FOH balcony rail holds the below fixtures from our house repertory plot.



FOH Box Booms HL + HR		FOH BALCONY RAIL	
FROM TOP TO BOTTOM. EACH SIDE HOLDS THE FOLLOWING:		FROM LEFT TO RIGHT, THE BALCONY RAIL HOLDS THE FOLLOWING:	
HOUSE LEFT	HOUSE RIGHT		
#1 ETC S4 10° 750w	#1 ETC S4 10° 750w	#1 ETC S4 26° 750w	#9 ETC S4 10° 750w
#2 ETC S4 10° 750w	#2 ETC S4 10° 750w	#2 ETC S4 26° 750w	#10 ETC S4 26° 750w
#3 ETC S4 10° 750w	#3 ETC S4 10° 750w	#3 ETC S4 10° 750w	#11 ETC S4 10° 750w
#4 ETC S4 10° 750w	#4 ETC S4 10° 750w	#4 ETC S4 26° 750w	#12 ETC S4 26° 750w
#5 ETC S4 10° 750w	#5 ETC S4 10° 750w	#5 ETC S4 10° 750w	#13 ETC S4 10° 750w
#6 ETC S4 10° 750w	#6 ETC S4 10° 750w	#6 ETC S4 10° 750w	#14 ETC S4 26° 750w
#7 ETC S4 10° 750w	#7 ETC S4 10° 750w	#7 ETC S4 26° 750w	#15 ETC S4 26° 750w
#8 ETC S4 10° 750w	#8 ETC S4 10° 750w	#8 ETC S4 26° 750w	#16 ETC S4 10° 750w
		HOUSE PROJECTOR @ C	

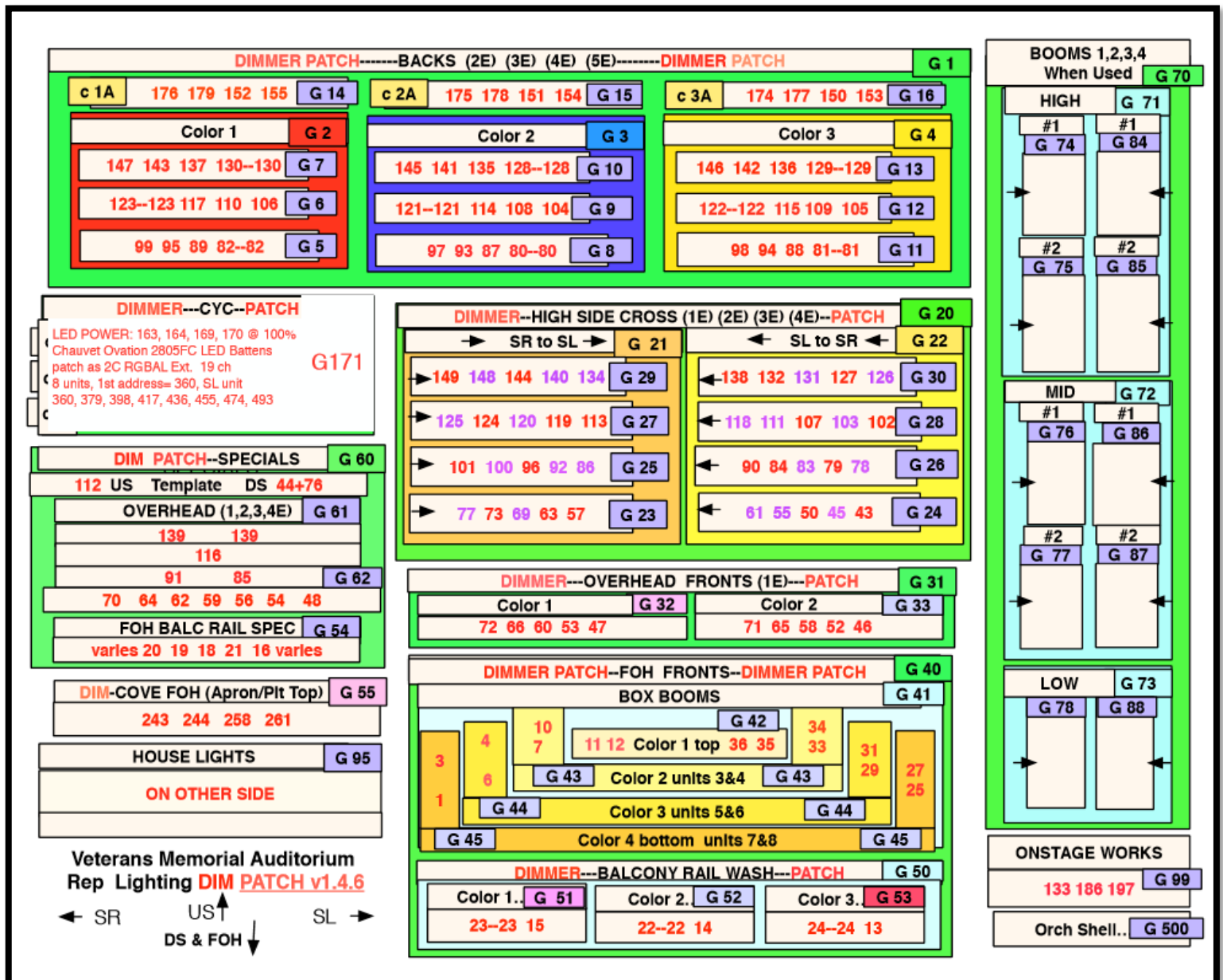
House Lighting

House Repertory Lighting Plot



House Lighting

House Repertory Dimmer Patch



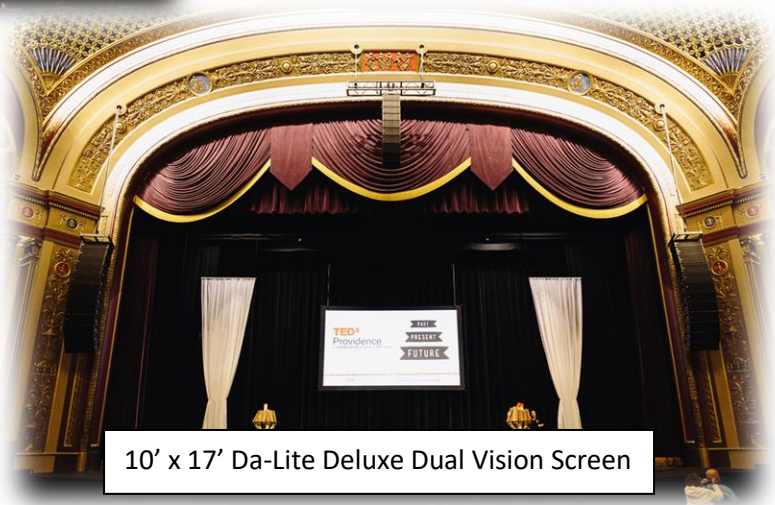
Video & Projection

House Video Equipment

Video Equipment		
Projector	Christie 14K Digital Projector WU14K-M	Mounted on Balcony Rail
Lenses	1.5-2.0 SX Roadster Lens	1.45-1.8 HD Roadster Lens
Switcher	Roland V-40HD Multiformat Switcher	With monitors and MacBook Pro laptop
Screens	10' x 17' Da-Lite Deluxe Dual Vision Screen	Available accessories: Hanging kit, Freestanding legs, Black dress kit. Front or rear projection.
	36' x 22' Da-Lite Matte Projection Screen	Permanently hung on lineset #5, 4'-4" from plaster line
Accessories	A variety of HDMI, SDI, DVD, Blu-ray, and adapters available	Please note that our SDI cable will not transmit Blu-ray because of copyright



36' x 22' Da-Lite Matte Projection Screen



10' x 17' Da-Lite Deluxe Dual Vision Screen

House Soft Goods

Quantities	Description (Fixed*)
1	Royal purple main drape, 28'h x 28'w (opening: guillotine or traveler) *
1	Royal purple fixed valance at a 23'-7" trim*
1	Royal purple valance/border downstage of main drape (adjustable trim) *
6	6 Pairs of Black Legs 28'h x 13'w
4	Black Borders
1	1 pair of black panels 28'h x 28'w (set at midstage (opening: guillotine or traveler)
1	Black sharks tooth scrim 28'h x 52'w
1	Natural, seamless muslin Cyclorama
** All available in-house soft goods are rated "IFR" (Inherently Flame Retardant)**	

Risers, Platforms & Staging

Quantities	Description
4	Wenger Choral Risers 3' x 8' with 8" legs
4	Wenger Choral Risers 3' x 8' with 16" legs
4	Wenger Choral Risers 3' x 8' with 24" legs
8	Wenger signature Choral Risers with 4-step capacity



Dance Floor

Quantities	Description
7	Rosco Brand Marley Dance Floor. Black on one Side, Grey on the other
Fully Covers the Stage when all Sections are used	



Orchestra Shell & Accessories

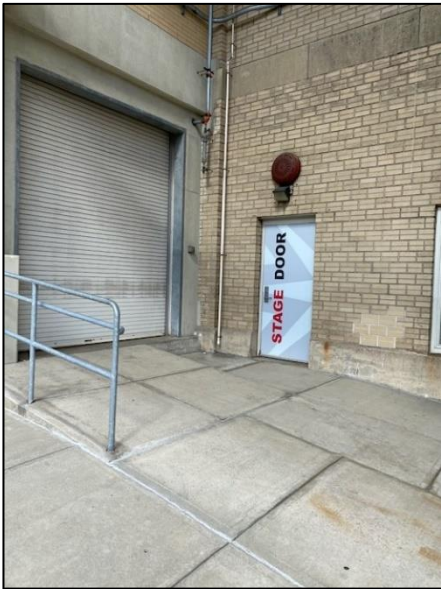
The VETS is the principal home of the Rhode Island Philharmonic Orchestra & Music School; therefore, we have the privilege of having the following equipment and accessories available. If interested, please let us know during your advance. This will incur an additional labor call.

- Deployable Wenger "Diva" acoustic symphony shell with accompanying Wenger "concert master" roof.
- When not in use, the roof is flown out on 4 separate line sets; these are permanent.
- Shell walls are stored in loft above stage on the SL side and otherwise do not interfere with show operations.
- 73 x Wenger "symphony" orchestra chairs
- 5 x Wenger "symphony" cello chairs
- 72 x music stands (no lights available)
- 65 x steel folding chairs
- A beautiful newly painted shell was unveiled for the January 2021 Concert!

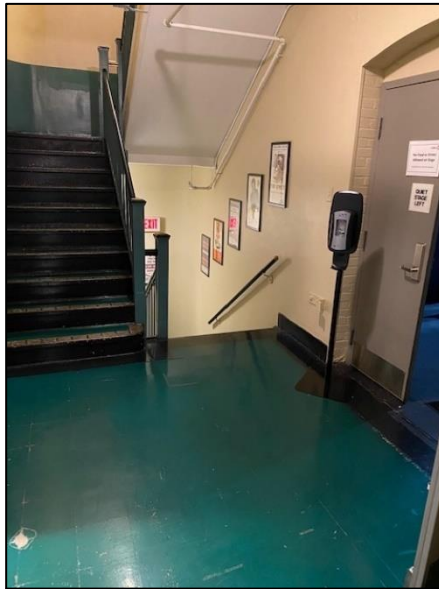


Dressing Rooms & Backstage Areas

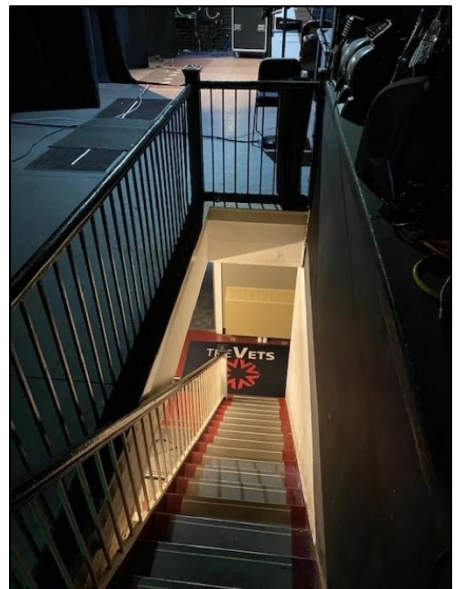
Dressing Rooms



Stage Door



Stage Door Stairs to Dressing Rooms and Stage Left



Stage Right Stairs to Greenroom, Catering, Fitness Center and Wardrobe/Laundry



2nd Floor Dressing Room Hall, 5 Star and 4 Chorus Rooms



3rd Floor Dressing Room Hall, 5 Star and 4 Chorus Rooms



2nd Floor Stage Left to Right Crossover



Star Dressing Room



**Star Dressing Room Private Restroom
with Shower**

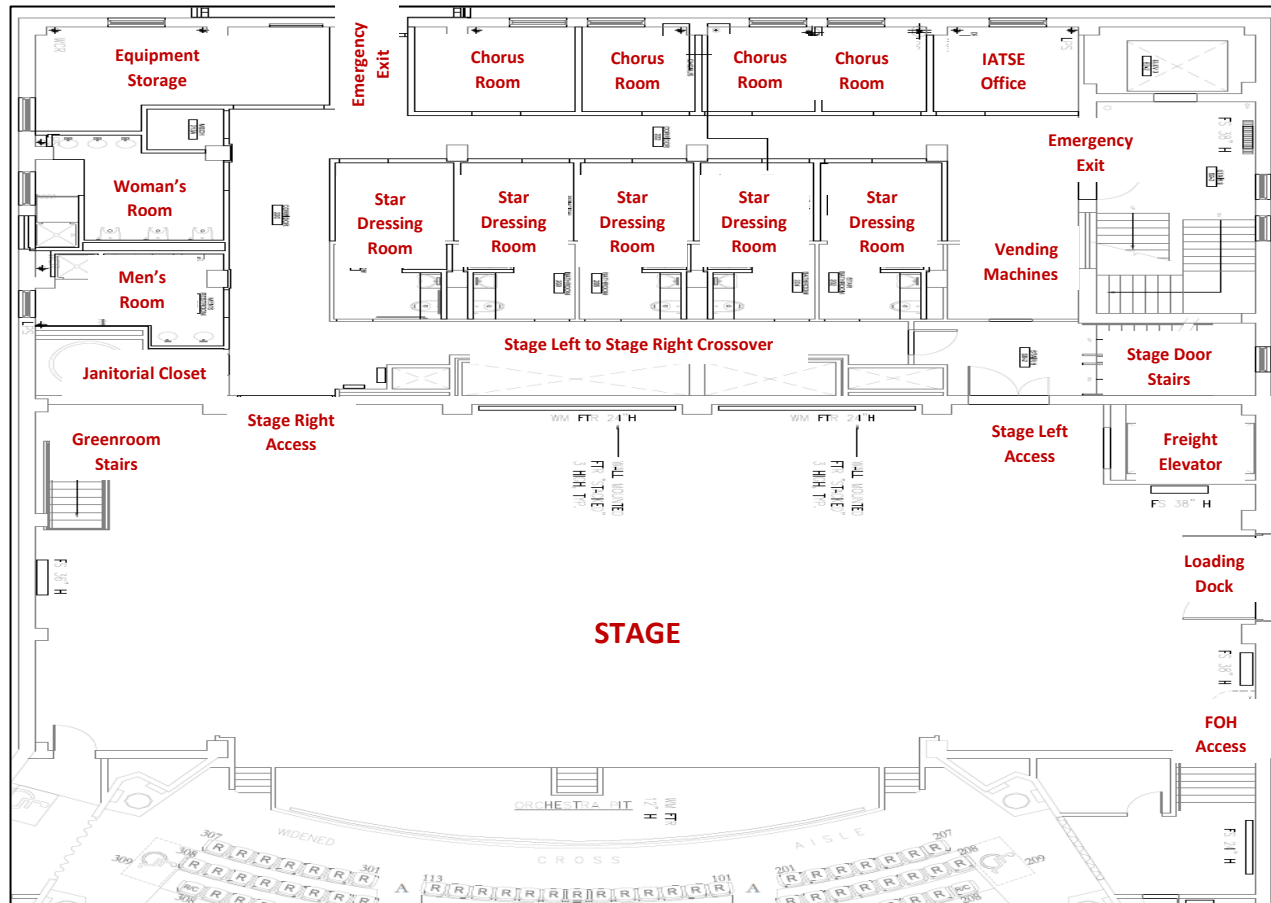


2nd Floor Chorus Room



**2nd Floor Public Restrooms
On Stage Right**

Dressing Rooms & Backstage Areas Second Floor (Stage Level)



Second Floor Backstage Map

Stage Door Stairwell

This stairwell leads to and from the marked Stage Door on Park St.

Star Dressing

There are five, star dressing rooms on the stage level. Each has a private restroom and shower.

Chorus Dressing

There are 4 chorus dressing rooms on level 2. Each has a counter and make up mirror with lights. (Production Office doubles as an additional dressing room.)

Public Restrooms

Located at the end of the hallway which includes toilet stalls and an additional shower.

Loading Dock

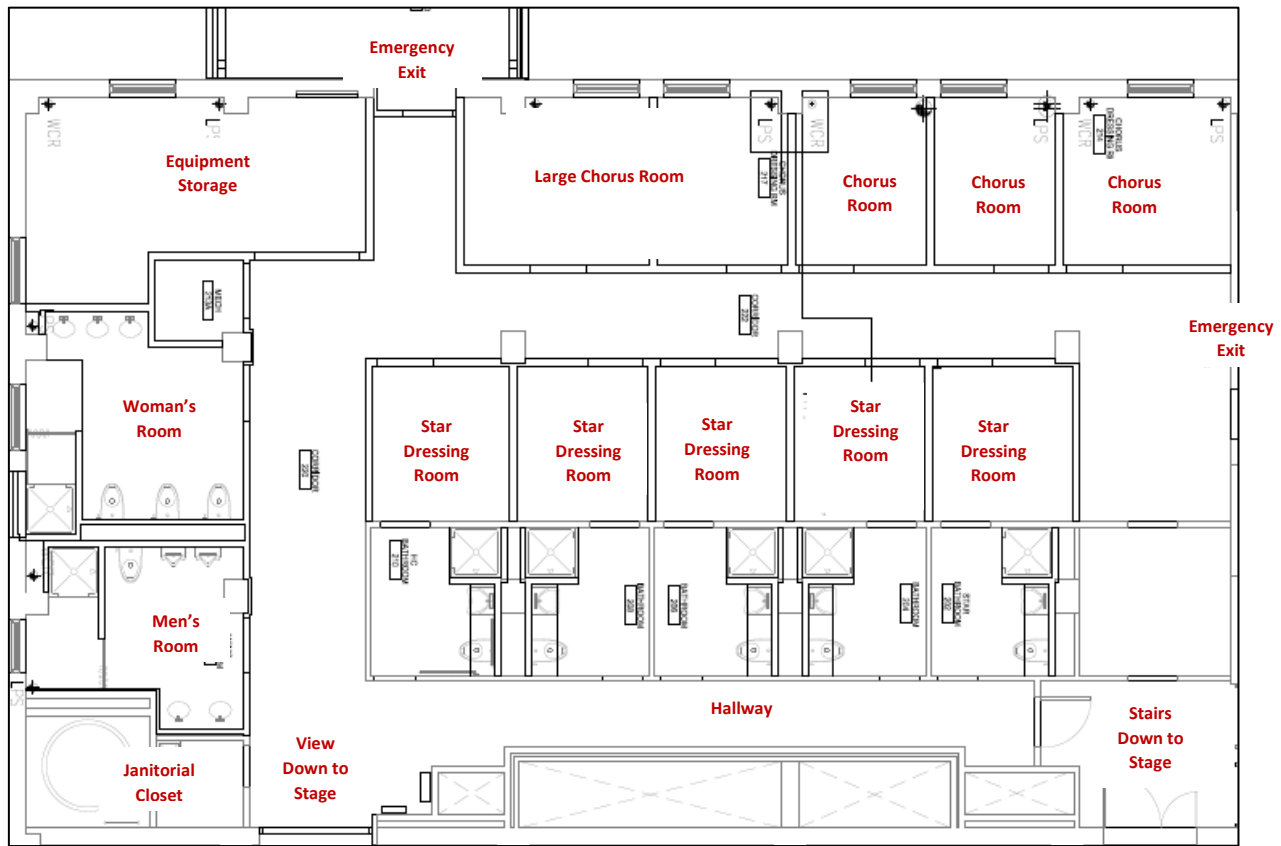
Our dock fits 1 semi; please refer to the Bus & Truck Parking section for more information.

Freight Elevator

Elevator with access to Stage, greenroom, and street level

Dressing Rooms & Backstage Areas

Third Floor Layout



Third Floor Backstage Map

Stage Door Stairwell

This stairwell leads to and from Park St., located on Park St. The door is marked as such and is reserved for tour personnel.

Star Dressing Rooms

There are five, star dressing rooms on the third floor: one level above the stage. Each is equipped with private restroom with shower, counter, and make up mirror with lights. Accommodates 2-3 people each.

Chorus Rooms

There are 4 chorus dressing rooms on level 3. Each is an empty room, if you need a table or chairs, please let us know. Accommodates 4-5 people each.

Public Restrooms

Located at the end of the hallway which includes toilet stalls and an additional shower.

Dressing Rooms & Backstage Areas

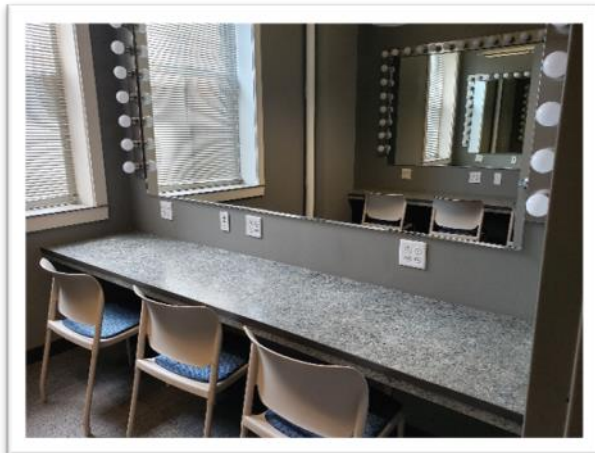
Wardrobe Room

VETS Wardrobe Room is located at the sub-stage level which is accessed via SR stairs, SL freight elevator, or street; and is equipped with the following:

- 2 high efficiency washer & dryer sets (please supply your own laundering supplies)
- A large deep double sink is available for hand washing.
- 2 ironing sets
- 1 steamer
- 4 rolling wardrobe racks



Production Office



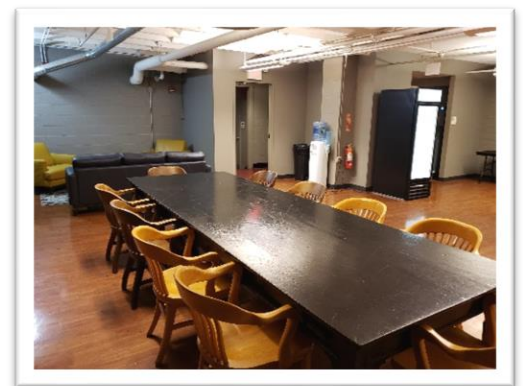
Production Office is located backstage right - stage level; it is equipped with the following.

- 2 wall-to-wall tables
- 6 chairs
- respectively, this may be used as a dressing room for larger tours.

Greenroom

The Greenroom (43' x 40') is located at the sub-stage level, which is accessed via SR stairs, SL freight elevator, or street, and features:

- 3 additional unisex restrooms
- pantry, sink, glass front refrigerator, 80lb ice machine
- large dining table with chairs
- foosball table
- leather couch with accompanying chairs, & marble coffee table If sound or video feed is needed for greenroom, please delineate in advance, as this will need to either be provided by tour, or equipment rented.
- Access to the Orchestra Pit is in the greenroom



Dressing Rooms & Backstage Areas

Fitness Center



The VETS Fitness Center is located just off the Green Room for artists and visiting crews use. It features the latest in digital fitness equipment including a Peloton Bike, Hydrow Rower, weights, and other training equipment.

Special Effects Rules & Regulations

Due to state laws and building requirements there are specific guidelines that must be followed if any kind of special effects are being used at The VETS.

Our stage is equipped with a deluge firewall system and we have beam smoke sensors as well as standard smoke detectors. These sensors **MUST** be turned off before any atmospheric effects are tested or run. Our fire panel may **ONLY** be turned off by City Fire Command Details who are generally booked 1.5h prior to advertised event start time for most events.

If you need to use your effects earlier in the day for a lighting focus, rehearsal or sound check you must let us know at least 48 hours in advance to ensure the appropriate arrangements are made with the City of Providence. Additional expenses will be incurred for this. Without advance notice we cannot guarantee we can test prior to the normally scheduled showtime calls.

Haze | Fog

As per Rhode Island State law; No haze or fog may be run in the building without a Fire Command Detail present to disable and monitor our panel. Please advance in detail your haze or fog needs so that we can plan accordingly. The venue's alarm system is intertwined with the hotel next door, if the atmospheric effect becomes too thick, it may impact the alarms in both venues. We will work with you on a case-by-case basis to address any concerns.

Pyrotechnics

As per Rhode Island State law if there is an open flame (open flame devices are defined as candles, torches, butane burners or any other flame producing device) you will need to download and fill out the proper pyrotechnics permits found at: www.fire-marshal.ri.gov/testingforms/forms.php (discuss during advance) - some limitations will apply.

Dry Ice

Dry ice is allowed, please be reminded to bring your own coolers and gloves.
Local vendor information available upon request.

Confetti

With advance approval, The VETS allows paper or eco-friendly confetti | NO MYLAR confetti allowed. Additional cleaning fees apply.

Snow | Bubbles

If snow or bubble effects are used during your event details of the chemical used must be advanced with our Technical Director for review and approval to ensure damage is not incurred to The VETS seats or equipment.

Strobe Lights

If using strobing effects, please denote this during advance so that we may inform our patrons with entry signage. Please let us know if you have your own tour signage to post.

Meet & Greet & VIP Experiences



All meet & greet and VIP Experiences need to be arranged in advance with The VETS General Manager.

Business Directory

Catering Services

Millonzi Fine Catering 11 Curson St. West Warwick, RI 401-615-7891 Kevin Millonzi Chef	Just Ellen's INC. 635 Division Rd. East Greenwich, RI 02818 401-419-1614 Ellen LoConto Owner
---	---

Local Business Directory

The VETS Business Directory		
The following list of businesses are not affiliated with PFM or The VETS and are in no order. These are merely suggestions; if you are looking for something specific, please let us know and we will be happy to guide you in the right direction.		
Health Wellness		
Acupuncture	Providence Community Acupuncture 1055 Westminster St. Providence, RI 02903	401-272-2288
	Christine Monteiro, D.A 144 Waterman Street, Suite 5, Providence, RI 02906	401-272-2288
Chiropractors	Dr. Douglas M. DeCubellis 143 Westminster St., Providence, RI 02903	401-521-1900
	Dr. Amy Westrick 511 Broadway, Providence, RI 02909	401-453-2225
Dental	Dr. Carl Cotoia, DDS 183 Waterman Ave. Providence, RI 02906	401-831-8998
	Dr. Paul J. Matrullo DDS 1280 Park Avenue Cranston, RI 02910	401-943-0644
	Dr. Jean Arthur 372 Ives St. Providence, RI 02906	401-862-6032
Dermatology	SkinPros 1287 North Main Street Providence, RI 02904	401-272-2724
	Dr. Ellen Frankel 750 Reservoir Ave., Cranston, RI 02910	401-943-0761
Ear Nose Throat	ENT RI Ste 2A, 148 West River Street Providence, RI 02904	401-728-0140
	ENT Allergy Associates 900 Warren Ave. Ste. 303 East Providence, RI 02914	401-435-5644
General Medicine	Dr. Daniel Shreve 450 Veterans Memorial Pkwy Unit 15B, East Providence, RI 02914	401-434-3305
	Rhode Island Hospital 593 Eddy Street, Providence RI 02903	401-444-4000

Gyms Fitness	Providence Fitness Center (Omni Hotel) 1 West Exchange Street, Providence RI, 02903	401-598-8000
	CrossFit Providence 425 Washington Street Providence, RI 02903	401-453-2348
	VP Fitness 10 Dorrance Street, Providence, RI 02903	401-479-7099
Hospitals Treatment Centers	Rhode Island Hospital 593 Eddy Street Providence, RI 02903	401-444-4000
	The Miriam Hospital 164 Summit Avenue Providence, RI	401-793-2500
	Women & Infants 101 Dudley Street Providence, RI 02905	401-274-1100
	Bradley Hospital Children + Adolescent Psychiatric 1011 Veterans Memorial Parkway Riverside, RI 02915	401-432-1000
	Butler Hospital Adult Psychiatric + Addiction 345 Blackstone Blvd. Providence, RI 02906	401-455-6200
	The Providence Center 530 North Main Street Providence, RI 02904	401-838-0188
Pharmacies	CVS (Providence Place Mall) 100 Francis Street, Providence, RI 02903	401-270-4440
	Walgreens Pharmacy 1140 North Main Street Providence, RI 02904	401-278-4901
Physical Therapy Orthopedics	RI Ortho Rhode Island (Ortho Express Emergencies 777-7000 #1) 285 Promenade Street Providence, RI 02908	401-459-4001
	West bay Orthopedic + Neurosurgery 120 Centerville Road Warwick, RI 02886	401-738-3730
	University Orthopedics 2 Dudley Street Suite 200 Providence, RI 02905	401-457-1500
	Performance Physical Therapy 49 Seekonk Street Providence, RI 02906	401-230-1126
Pediatrics	Coastal Medical Pediatrics 900 Warren Ave., East Providence, RI 02914	401-421-6481
	Hasbro Children's Hospital 593 Eddy Street LL Providence, RI 02903	401-444-4471
	East Side Pediatrics 285 Governor Street 3 rd Fl Providence, RI 02906	401-383-4411
Podiatry	Dr. Joseph DeCesare 201 Broadway, Providence, RI 02903	401-421-9167
	University Foot & Ankle 235 Plain Street STE 201 Providence, RI 02905	401-861-8830

Salons Day Spas	Coiffurium East Side 800 Hope Street Providence, RI 02906	401-331-1115
	Arrow Salon 230 Rochambeau Avenue Providence, RI 02906	401-521-1457
	Impulse Hair Designs The Arcade 65 Weybosset Street Providence, RI 02903	401-421-9294
	Moss Salon 114 North Main Street Providence, RI 02903	401-751-8877
	Christiaan Salon & Day Spa 4 Benefit Street Providence, RI 02903	401-521-5050
	Flipp Salon 38 Transit Street Providence, RI 02903	401-274-1981
Women's Medicine	Women's Primary Care, Medicine Collaborative West River Center 146 West River Street 3 rd FL Providence, RI 02904	401-793-5700
	Women & Infants 101 Dudley Street Providence, RI 02905	401-274-1100
Services		
Bus Services	Conway Tours	800-888-4661
	Peter Pan Bus Lines	1-800-343-9999
	Viking Tours	401-847-6921
Cab Services	Yellow Cab	401-941-1122
Lodging	Biltmore The Graduate (www.providencebiltmore.com)	401-421-0700
	Homewood Suites (www.hilton.com) 5 Exchange St. Prov., RI	401-942-2001
	Hampton Inn Hotel (www.hamptoninn.com)	401-608-3500
	Hilton Providence (www.hilton.com/providence)	401-831-3900
	Hotel Providence (www.hotelprovidence.com)	401-861-8000
	Marriott (www.marriottprovidence.com)	401.272.2400
	Providence Courtyard by Marriott (www.Marriott.com)	401.272.1191
	Renaissance Providence (www.renaissanceprovidence.com)	401.919.5003
	Omni Hotel (www.omnithotels.com)	401-598-8000
	Hilton Garden Inn (www.jpitt@wyndham.com)	401.272.5577
Laundry Dry Cleaning	The Laundry Club 140 Medway Street, Providence RI 02903	401.272.2520
	On the Go Laundry & Dry Cleaning Pick Up Delivery Service www.onthegolaundry.com	401-749-6379
Limo Car Services	Sentinel Limousine & Coach Inc. 11 Clemenceau Street East Providence, RI 02914	401-434-2700
	Enterprise Rent-a-Car (RI Convention Center) 1 Sabin Street, Providence RI 02903	401-232-2056
Parking	Providence Place Parking Garage	401-270-4421
Post Office	Providence Main Post Office 24 Corliss St. Providence, RI 02903	401-275-8619

