

# THEVETS

## Tech Packet

v.019A

One Avenue of the Arts  
Providence, RI 02903  
Website: [www.thevetsri.com](http://www.thevetsri.com)  
Tel: 401.222.1467  
Fax: 401.222.1466

# TECH PACKET | TABLE OF CONTENTS



WELCOME LETTER FROM VETS TECHNICAL DIRECTOR	3
TECHNICAL + OPERATIONS CONTACTS	4
"I.A.T.S.E LOCAL 23 + THE VETS	5
LOADING   PARKING   DIRECTIONS	6 - 10
QUICK REFERENCE BACKSTAGE GUIDE	11
WIRELESS INTERNET	12

MAIN ENTRANCE   LOBBY LAYOUT	13
SEATING CHART	14
MEASUREMENTS   SEATING CAPACITIES	15

RIGGING   MOTORS   TRUSS   LINESET SCHEDULE	16 - 17
AUDIO	18
ELECTRICS	19 - 23
VIDEO   PROJECTION	24
STAGE GOODS   ORCHESTRA PIT + COVER	25 - 26
SFX RULES + REGULATIONS PER THE STATE OF RI	27
WARDROBE   GREENROOM   PRODUCTION OFFICE	28
DRESSING ROOMS + BACKSTAGE GROUNDPLANS	29 - 31

CATERING + HOSPITALITY SERVICES	32
LOCAL BUSINESS DIRECTORY	32 - 35

1/2019

Welcome to The VETS!

Whether you are part of a technical crew, performer, or potential client, I welcome you to one of Providence and Rhode Island's premiere and iconic theatrical, performance, and event space! Our goal is to make your experience as smooth and productive as possible. If there is any way I can assist you with planning or to answer any questions, please feel free to reach out via email at [nmuzzi@pfmcorp.com](mailto:nmuzzi@pfmcorp.com) or by phone at 401.222.1467. I look forward to meeting you and making your experience here in Providence as memorable as possible!

Thank you and look forward to seeing you soon!

Nina Muzzi  
Technical Director

The VETS  
83 Park Street  
Suite M  
Providence, RI 02903

Office: 401.222.1467  
Fax: 401.222.1466  
Email: [nmuzzi@pfmcorp.com](mailto:nmuzzi@pfmcorp.com)

**THE VETS**



# TECHNICAL+ OPERATIONS CONTACTS

PLEASE USE OUR MAIN PHONE LINE FOR ANY INQUIRES UNLESS SPECIFIED – 401.222.1467

## **In House Directors & Managers**

General Manager	Dan Schwartz	<a href="mailto:dschwartz@pfmcorp.com">dschwartz@pfmcorp.com</a>	401.222.1467
Office Manager	Doreen Vitale	<a href="mailto:dvitale@pfmcorp.com">dvitale@pfmcorp.com</a>	401.222.1467
Technical Director	Nina Muzzi	<a href="mailto:nmuzzi@pfmcorp.com">nmuzzi@pfmcorp.com</a>	401.222.1467
Director of Operations	Steve Pereira	<a href="mailto:spereira@pfmcorp.com">spereira@pfmcorp.com</a>	401.222.1467
Director of Marketing	Michael Gravison	<a href="mailto:mgravison@pfmcorp.com">mgravison@pfmcorp.com</a>	401.222.1467
Box Office Manager	Tara Edwards	<a href="mailto:tedwards@pfmcorp.com">tedwards@pfmcorp.com</a>	401.421.2787
House Manager	Patricia Lynch	<a href="mailto:plynch@pfmcorp.com">plynch@pfmcorp.com</a>	401.222.1467
Head of Security	Dave Luongo	<a href="mailto:dluongo@ppacri.org">dluongo@ppacri.org</a>	

## **I.A.T.S.E Local 23 + Local 830**

Business Agent IA 23	Charlie Ryan	<a href="mailto:cryan@iatse23.org">cryan@iatse23.org</a>	508.216.6071
Head Carpenter   Rigger	Jared Brackett	<a href="mailto:jaredbrackett89@yahoo.com">jaredbrackett89@yahoo.com</a>	401.363.2121
Head Electrician	Matthew Ehlert	<a href="mailto:matt@mattehlertlighting.com">matt@mattehlertlighting.com</a>	401.862.4233
Head Audio	Michael Moore	<a href="mailto:mdmoore14@gmail.com">mdmoore14@gmail.com</a>	401.413.0207
Head of Props	Richard Rossi	<a href="mailto:chardrr@yahoo.com">chardrr@yahoo.com</a>	401.447.7229
Wardrobe Business Agent IA	Debbie Voccio	<a href="mailto:debbievoccio@yahoo.com">debbievoccio@yahoo.com</a>	401.527.5009
Wardrobe Steward	James Ferreria	<a href="mailto:rib beef11@aol.com">rib beef11@aol.com</a>	774.991.2624

**MAILING ADDRESS:** C/O TECHNICAL DIRECTOR: “NINA MUZZI” **OR** (SHOW NAME)

THE VETS \* 83 PARK STREET \* PROVIDENCE, RHODE ISLAND 02903

# IATSE LOCAL 23 & THE VETS

Bringing experience and expertise to the stage, IATSE is the International Alliance of Theatrical Stage Employees, moving picture technicians, artists, and allied crafts, is a proud organization of industry professionals with universal goals.

Because Local 23 has had a long history in Providence's theatrical venues, our members have worked with and supported some of the greatest names in the entertainment industry. Shows such as Lindsey Sterling, Scott Bradlees's Postmodern Jukebox, Last Comic Standing, Lyle Lovett & John Hiatt, Nora Jones, and many more have passed through our halls.

Currently IATSE 23 members support shows in Providence at the Providence Performing Arts Center, Dunkin Donuts Center, The Vets, as well as live concerts in arenas, outdoor venues, colleges, and casinos.

Members of IATSE are highly qualified and skilled individuals, dedicated to making your event a great success. They take pride in their history of providing first-rate technical and logistical support, even as technology is ever evolving.

If you are booking an event at The VETS and would like a labor quote, please inquire with our Technical Director, Nina Muzzi ([nmuzzi@pfmcorp.com](mailto:nmuzzi@pfmcorp.com)) for current rates.

## LOADING | PARKING | DIRECTIONS

**Elevated Loading Dock:** At truck height featuring a hydraulic leveler directly onto stage left. Width of the dock clearance is 10' 6" wide x 14' high. We also have an inhouse ramp that we can use to bring in equipment.



Due to Rhode Island Fire Code the trailer can remain in the loading dock during performances however the cab must detach and park outside the facility (discuss during advance).

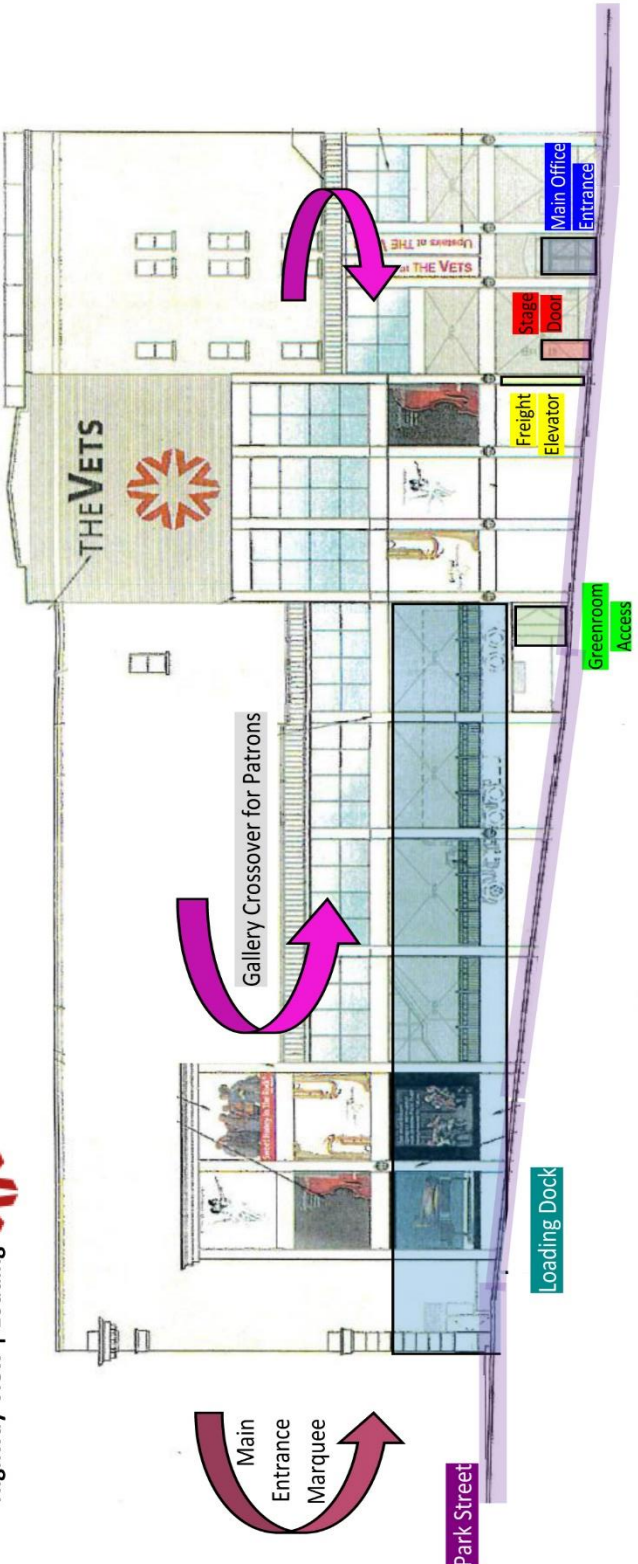

**Freight Elevator:** Located on Park Street, going down the hill. From street level elevator goes to greenroom (under stage) as well as stage level on USL. Elevator dimensions: 7'7" deep x 5'10" wide. Elevator door height: 5'10" wide x 6'8" high.



### **Trolley Hoist**

Featured immediately inside the loading dock, on stage, is a 3-ton trolley-hoist motor mounted on an I-beam for assistance stacking and un-stacking cases.

LOADING | PARKING | DIRECTIONS

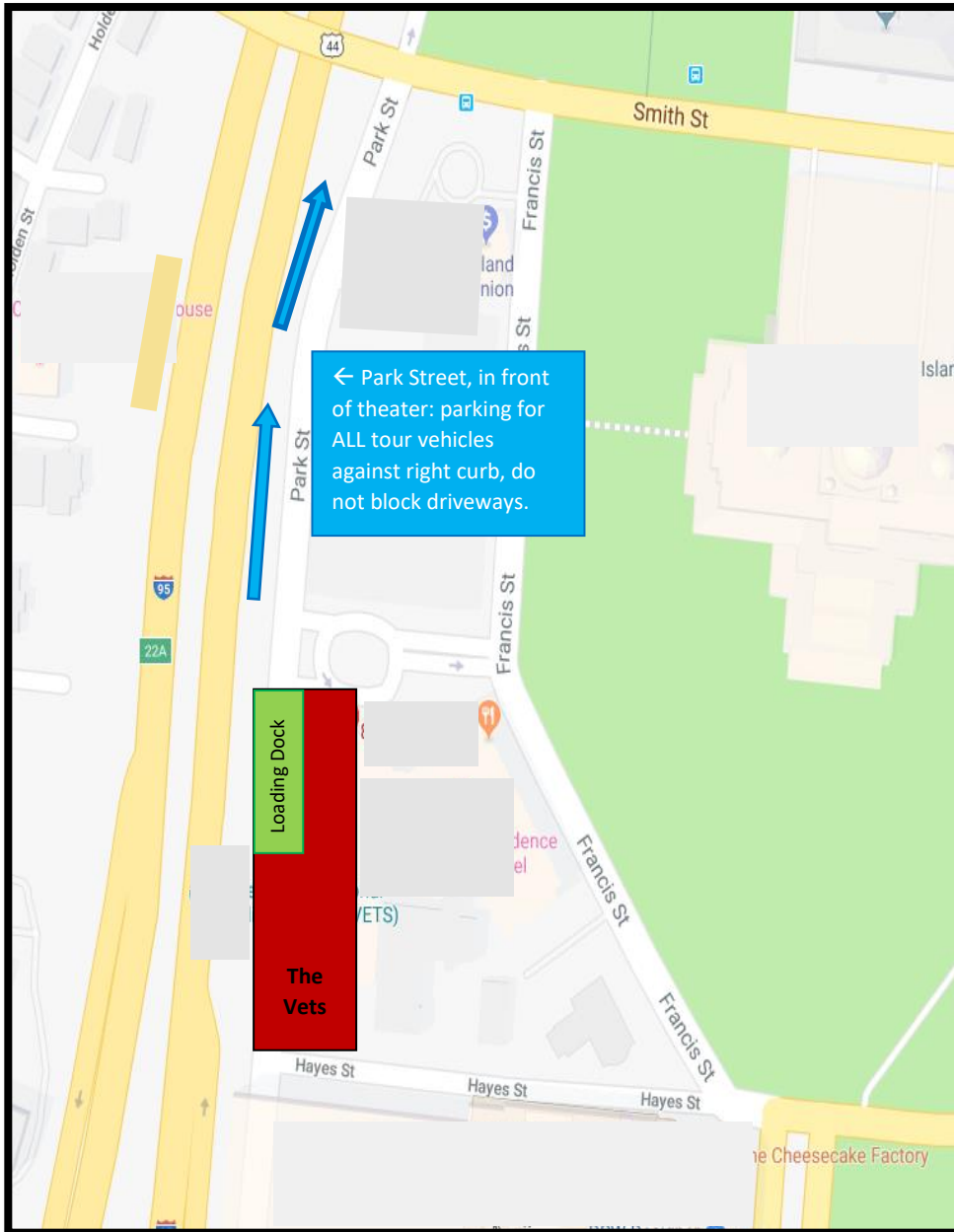


Highway View   Loading Map   Please share this with your road cast & crew	
Main Office Entrance	83 Park St. Providence, RI 02903   Elevator access (must let security know, door to 2 <sup>nd</sup> floor stays locked).
Stage Door	This door leads to and from backstage including dressing areas. 3 flights of stairs up, security guard.
Freight Elevator	This elevator is located next to the Stage Door, to the left. Loading is perpendicular to building.
Greenroom Access	Door must be opened by security for load in purposes only. This door goes up a half flight of stairs to the greenroom and wardrobe area.
Loading Dock	Room for up to 1 semi. Trailer may stay for show, but cab must be removed and parked in designated tour area. Back in only to stage level or we have a ramp option.
Park Street	Park St is on an incline, most shows we close the top portion of the street for tour parking. This will be discussed during your advance.
This view is from the highway; R95 N & S	

# LOADING | PARKING | DIRECTIONS

- There is the ability to park one (1) 53' trailer on the SL Loading Dock.
- For additional tour parking, Park Street is available to park tour vehicles. From our front circle to the traffic light at Smith Street.
- Long term truck parking is available at Exit 5B on Interstate 95 - 20 Minutes South of Providence.

**NO SHORE POWER IS AVAILABLE AT THIS TIME.**



## From Points North

- 95 South to Exit 22A-22B – 22C for RI-10 W/Providence PI towards US-6W
- Keep right to continue on Exit 22C
- Turn right onto Providence PI
- Providence PI turns slightly left and becomes Park St.
- The VETs will be on your right

## From Points South

- 95 North to Exit 22A-B-C
- Take Exit 22A-B-C for US-6 W/RI 10 W towards Hartford CT
- Keep right to continue on Exit 22C, follow signs for Providence PI and merge onto Providence PI
- Providence PI turns slightly left and becomes Park St.
- The VETs will be on your right

## From Points East

- I-195 W to
- Keep right to continue on US-6 W
- Merge onto I-95 N/US-6 W
- CONTINUE – From Points South

## From Points West

- US-6E to Downtown Exit
- Take Dean St. Exit from US-6 E
- Continue on Dean St. Take right onto Providence PL
- CONTINUE – From Points South

## LOADING | PARKING | DIRECTIONS



Upon entering the area, you will see the **Main Entrance** to The Vets.

Note the **Loading Ramp\*** to the right. This is for loading and unloading tractor trailer trucks. Once your truck(s) is unloaded please have your driver remove the cab and park it in the designated area.

**Stage Door** is marked as such; staff, crew, and talent will enter through this door prior to main entrance being open.

**Bus & Trailer Cab Parking** is area between Smith St. and front entrance of The Vets. Parking will be designated via advancement with Technical Director.

**Main Entrance** is as shown in photo above.

The **Gallery** is the general public cut through from Park St. to the main lobby.

**Loading Dock\*** is as shown in photo above.

**Stage Elevator\*** is used as a secondary loading location.

**Stage Door** is marked as such; staff, crew, and talent will enter through this door. (3 flights up to stage)

**Park Street Entrance** is used by the general public to enter building.



## LOADING | PARKING | DIRECTIONS

**Due to Rhode Island Fire Code** the trailer can remain in the dock during performances however the cab must detach and park outside the facility (discuss parking during advance).

During residency of some tours and events it may be necessary to close some of the surrounding streets for tour parking needs. This will be discussed in your advance process. Please let us know roughly what time your caravan will arrive/depart from the venue so that we pull the proper permits.

**No Shore power** or water hook ups are available at this time, however you may run a generator, if needed.

### Guest Parking

**Mall Parking |** Secure paid parking is available at the Providence Place Mall North Entrance, directly behind The Vets at a rate of \$2.00 for the first 5 hours.

To exit the lot on foot, take the north elevators or stairs located at the rear of BOSCOV to level “B”. This will bring you to street level directly behind the theater. Proceed north up the sidewalk either side to the theater front entrance.

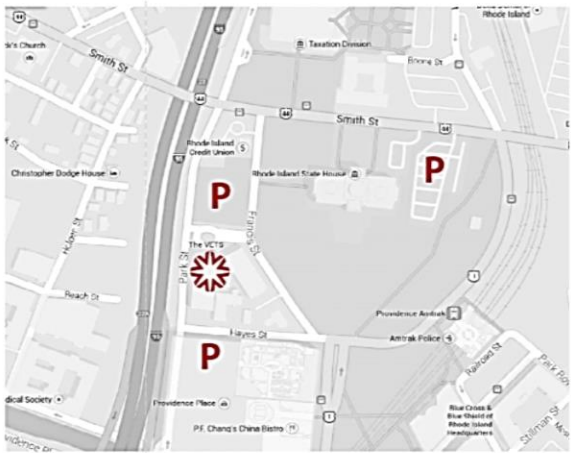
**VETS Lot |** The VETS parking lot is open for most shows on a first come first serve basis and is \$15.00 per vehicle.


**Handicapped Parking |** Handicapped parking is in the front of the theater, spots are first come first serve.

**Free Parking |** Free parking is available in the State of Rhode Island lots on Smith Street. On-street parking is available on Francis and Smith Streets.

### Parking Information

- The VETS lot located directly in front of the venue is \$15. Entrance to the lot is on Park Street.
- The Providence Place Mall garage is located directly behind The VETS. Parking is \$2 for the first 5 hours.
- Free parking is available in the State House parking lots on Smith Street (VETS guests are allowed access to this lot during VETS events regardless of signage saying state house employees only).
- On-street metered parking is available on Francis and Smith Street.



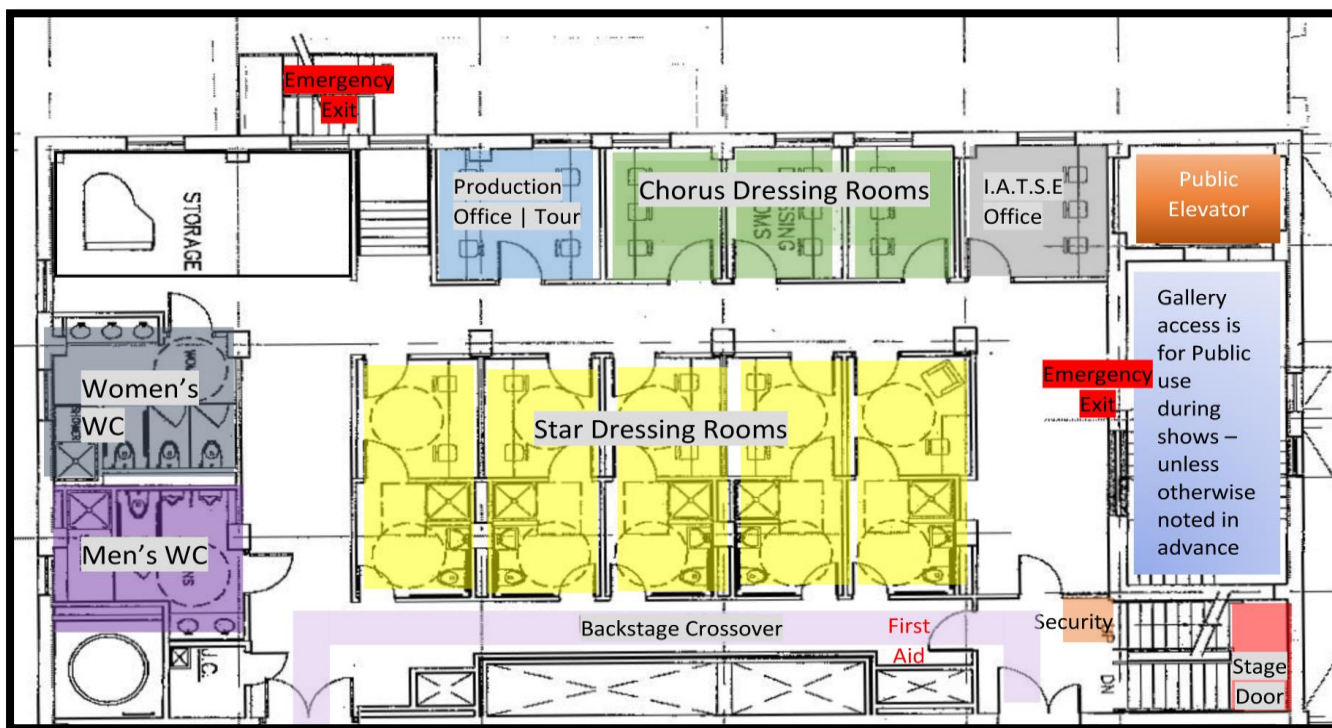
**THE VETS** 

# Welcome to **THE VETS** in Providence, Rhode Island!

*Below is some important information that you should know to enjoy your stay here with us.*

<b>Production Manager: Nina Muzzi 401-632-3820   General Manager: Dan Schwartz 248-798-7525</b>	
Wireless Internet	Backstage has a <b>hidden</b> SSID. Search for: Wi-Fi: <b>VETS-Tech83</b> (case sensitive) Security clearance: WPA2   Password: <b>4012221467</b> (no spaces)
Lobby Doors	1 hour prior to scheduled showtime (unless otherwise specified)
House Doors	½ hour prior to scheduled showtime (unless otherwise specified)
Curfew	12a for backstage guests, no city fine otherwise. IA overtime occurs for shows over 3h 10m. Double time between 2a and 8a.
Dressing Rooms (map below)	Dressing rooms are located on the 2 <sup>nd</sup> and 3 <sup>rd</sup> floors. Each floor has the following dressing rooms: 5 – Star Dressing rooms on left side which have their own WC w/shower 4 – Chorus rooms on the right side, no WC. (5 chorus rooms on the 3 <sup>rd</sup> floor)
Tour Production Office	Stage level, chorus room #5 is typically reserved as tour production, but may be moved if needed.
Crew Showers	All star dressing rooms have private WC w/showers Restrooms at the end of each dressing room hallway have a shower Towels are available upon request.
First Aid & AED	Both are located next to security, right before you enter SL
FOH Crossover	1. SL – through the house – to lobby 2. Through the Gallery (glass crossover) take elevator to #3, this will take you to the lobby.

**Please mind the doors that you go through, some may lock behind you. If you are unsure, just ask!**



THE VETS



**Main Office Phone:**  
401-222-1467



**General Manager**  
Dan Schwartz



**VETs Website:**  
[www.thevetsri.com](http://www.thevetsri.com)



**VETs Address:**  
83 Park Street  
Providence, RI 02903

#### PLEASE NOTE



If you are staying at The Vets for multiple days, and would **NOT** like your dressing cleaned, please lock | close your door and place your trash bucket in the hallway at the end of the night.

*The VETs now has secure,  
state of the art  
FREE WI-FI for everyone!*

## Wireless Internet

### SECURE TOUR WI-FI

Go to your WI-FI settings  
Select: **VETS-Tech83**  
Password: 4012221467  
Click **CONNECT** on prompt screen  
Connected Duration: 48h  
Available: backstage, dressing rooms, green room, stage, house, and lobby

### PATRON WI-FI

Name: Vets-Guest  
Enter email address on prompt screen  
Connected Duration: 4h  
Available: lobby, house

## Troubleshooting

### Can't Connect? Having Problems?

Having trouble connecting to the internet? Please call the Hospitality Network Service Desk for help.  
Phone: 800-937-5010  
Select: Option 2

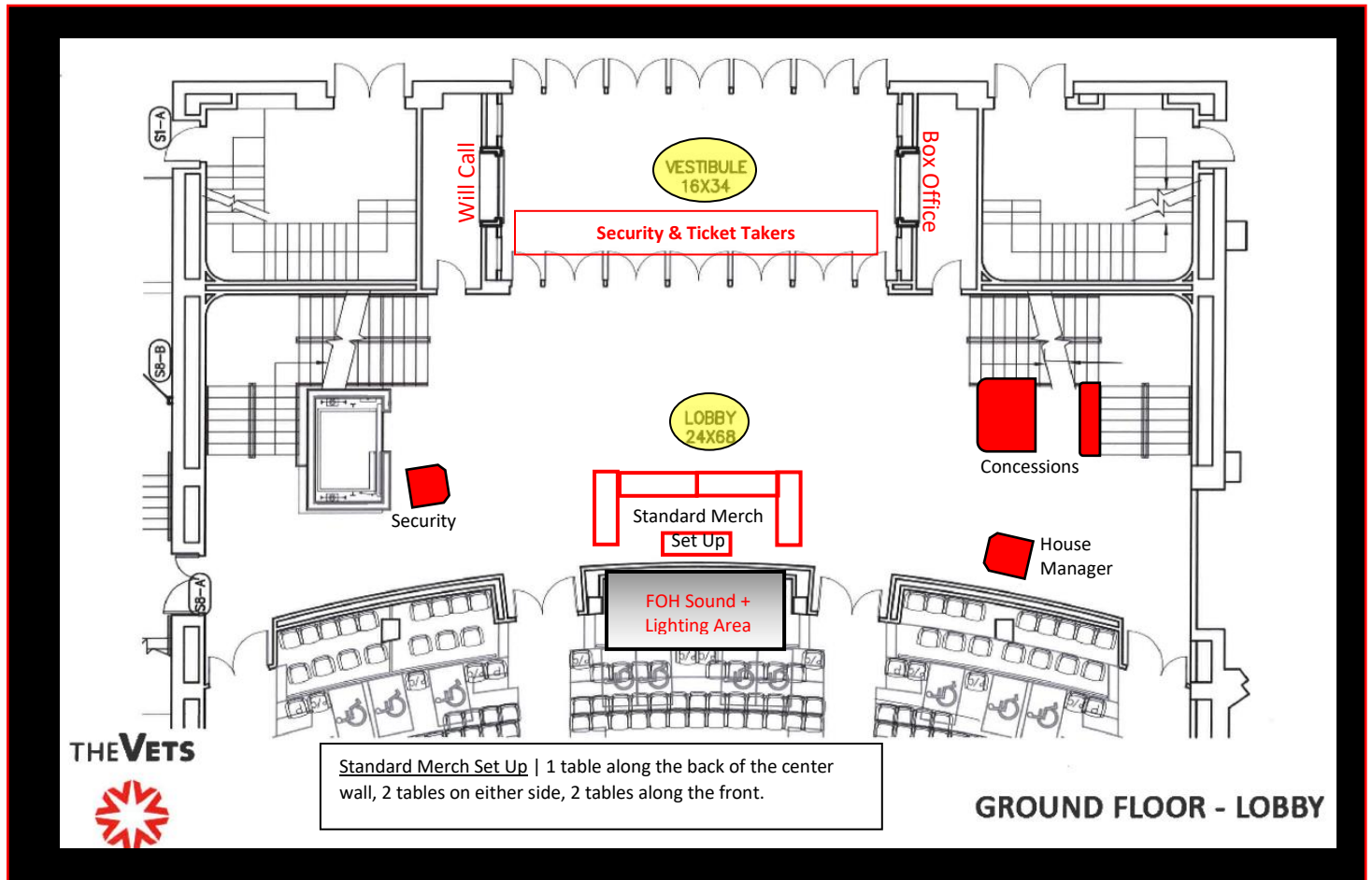
**If the Support line does not resolve any issue in a timely manner, please contact the following personnel:**

General Manager:  
Dan Schwartz | [dschwartz@pfmcorp.com](mailto:dschwartz@pfmcorp.com)  
248-798-7525

Production Manager:  
Nina Muzzi | [nmuzzi@pfmcorp.com](mailto:nmuzzi@pfmcorp.com)  
401-632-3820

# MAIN ENTRANCE | LOBBY LAYOUT

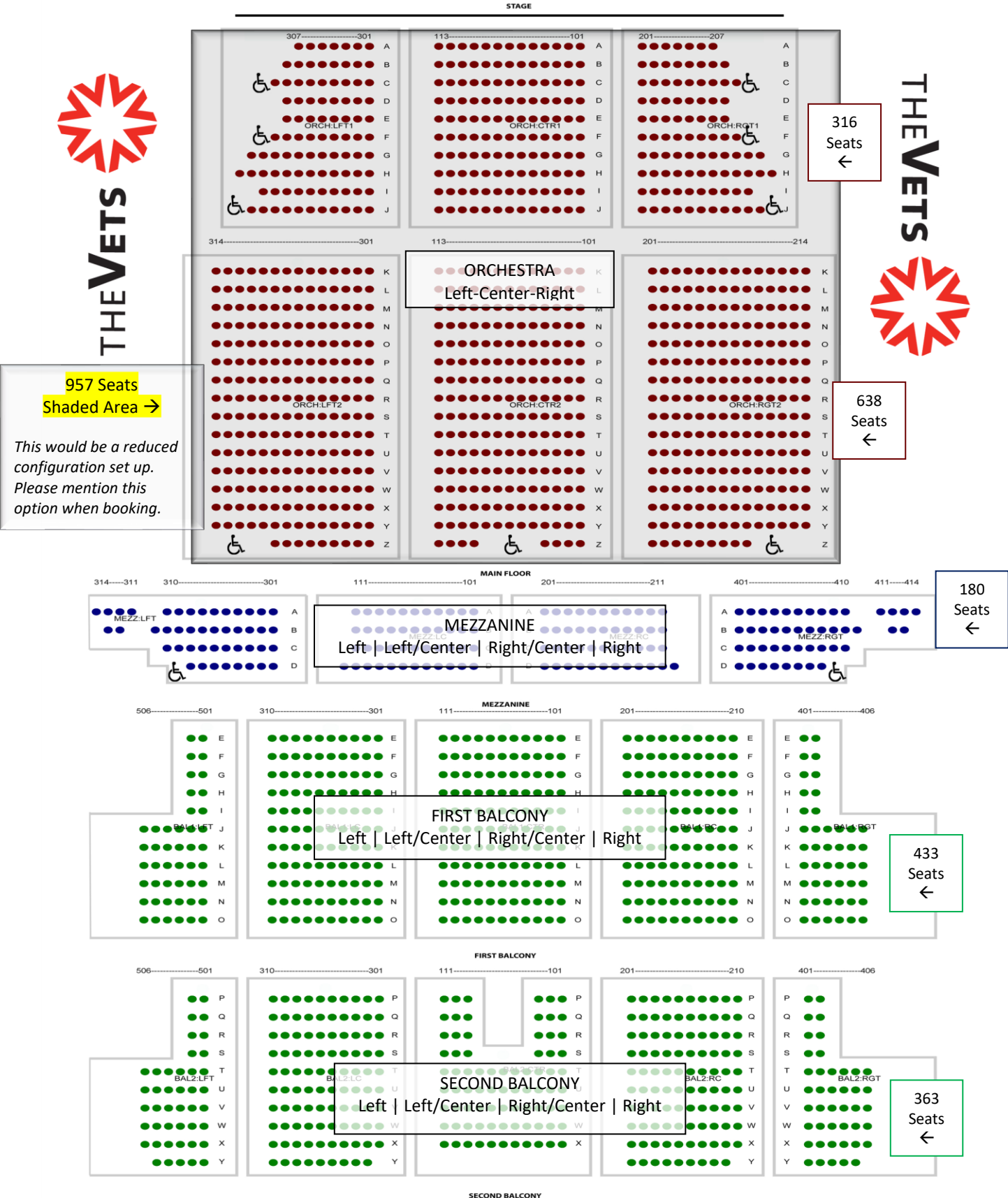
**Merchandise** If you are selling merch and need to load items into the lobby you can either unload at the front of the building (One Avenue of the Arts, Providence, RI 02903) and roll it right into the lobby. Your other option would be to take it from the stage and bring it through the house to the lobby. There is no ramp from the stage to the house.



**Security** Our Security Supervisor on duty for your event will always be stationed at the Security Podium. Fire Detail as well as Police Detail will check in with this member of security for each event. (if applicable) This security guard will also convey any show specific rules and regulations to each member of the security team per show as well as keep in contact with backstage (security guard and house production manager) if any problems arise, there need to be any escorts, or if a runner is needed.

**House Manager** Stationed at the House Management podium will be either Pat Lynch, our House Manager or Deb Correia, our Assistant House Manager. They will delegate aisle captains as well as ushers to their appropriate stations, handle any patron concerns or needs as they arise, as well as communicate with backstage (house production manager) if there are any show holds, or emergencies.

# SEATING CHART



# MEASUREMENTS | CAPACITIES

Theater Measurements	<b>Proscenium</b>	Width: 48' Height: 23' 7" Measurement to fixed valance
	<b>Stage</b>	Total Width, wall to wall: 85' Fire Curtain to back wall: 39' 6" Total Depth, lip to wall: 50'
	<b>Wings</b>	Stage Left: 24' (loading door & freight elevator) Stage Right: 13' (stairs to greenroom)
	<b>Grid</b>	Height: 65' 3" Stage to Loading Rail: 53'
	<b>Apron</b>	Depth: 3' 1" downstage of plaster line
	<b>Auditorium</b> <i>(Measurements to DS centerline)</i>	From Projection Booth: 153' From Box Booms: 55' From Balcony Rail 66'   Mezz overhang: 45' From FOH Mix Position: ___' House width, wall to wall: 72' From Orchestra level seating: 89'
	<b>Orchestra Pit</b> <i>(curved front 42' x 10')</i>	Full matching pit deck / cover is in place for most events extending the DS performance area and eliminating the gap between artist & audience. Arrangements must be made in advance if this needs to be removed for traditional orchestra pit use, seating (25) or ballet. Removal requires an 8h labor call for the removal & restore.



<b>Seating Capacity</b>	Total: 1,933
Orchestra Pit: No Available Seating	Mezzanine: 180
Orchestra Level: 957	First Balcony: 433
A reduced audience configuration is also available; which is Orchestra Level only. Please inquire upon booking: 975 seats.	Second Balcony: 363
	Total ADA Seats: 18

# RIGGING + MOTORS + TRUSS

## FOH RIGGING POINTS

WE HAVE 6 FOH HANGING POSITIONS.

House Left **A** is 9'-4" from CL

House Left **B** is 14'-3" from CL

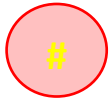
House Left **C** is 19' from CL

## HR MIRRORS HL

House Right **A** is 9'-4" from CL

House Right **B** is 14'-3" from CL

House Right **C** is 19' from CL

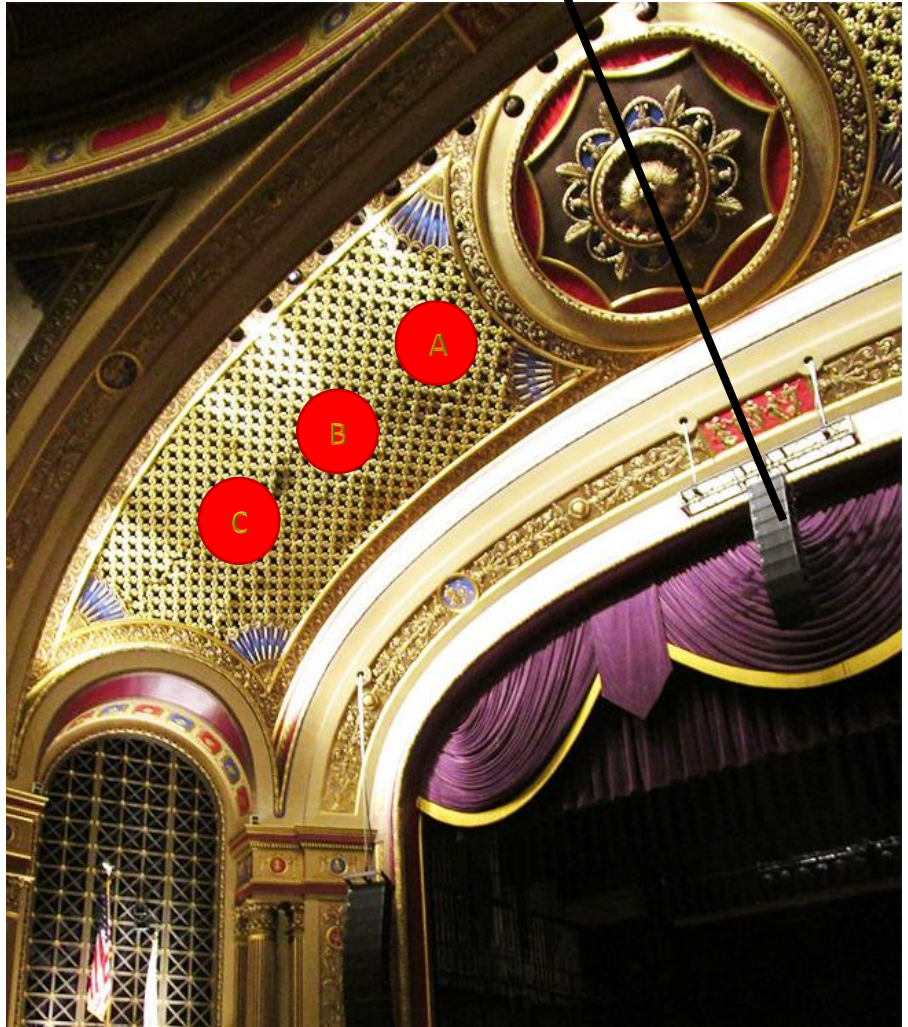


Denotes FOH  
Hanging Points

## STAGE RIGGING NOTE

Rigging points on stage are center; running up and down stage and every 7'-6" from center. (Well steel only, no midpoints unless bridled)

Over the stage grid can support up to \_\_\_\_\_ lbs.



FLY RAIL - SR	48 LINESETS — UPRIGHT DOUBLE PURCHASE ARBOR SYSTEM		FLY-RAIL LOCATED @ 15' FROM DECK LOADING GALLERY @ 53' FROM DECK	
	BATTEN LENGTH: 52'		1,200LB CAPACITY PER BATTEN	
MOTORS	6 x CM 1-TON CHAIN MOTORS		RIGGED FROM MAIN GRID 65'-3" FROM DECK	
	WELL STEEL IS CENTER AND 7'6" LEFT AND RIGHT POINTS BETWEEN THESE MEASUREMENTS WILL NEED TO BE BRIDLED.			
TRUSS + BOOMS	40 — 12: SIDE ARMS		8- 16' BOOM PIPES, 50LB. BASES, AND TIE OFFS.	
	10 x THOMAS GENERAL PURPOSE TRUSS 18" x 12" x 8' SECTIONS			
ACCESSORIES + EQUIPMENT	GENIE AWP 36 LIFT	20 - 10LB SAND BAGS	32 - FIXED CHEESEBOROS	

# Line Set Schedule

RED Permanent \* BLUE Moves \* GREEN LX Rep Plot \* PURPLE acoustic shell

LINE	FROM PLASTER	DESCRIPTION	NOTES
-	-4"	house valance, purple; fixed @ 23'-7"h	Fixed
1	1' 0"	adjustable house valance, purple	Fixed
STAGE	1' 8"	house main, purple (guillotine or travels)	Fixed
2	2' 4"		
3	3' 0"	1 <sup>st</sup> electric (circuits 43-77) – Rep Plot	Fixed
4	3' 8"		
5	4' 4"	movie screen (36' x 22')	Fixed
6	5' 0"	acoustic shell ceiling #1	Fixed
7	6' 4"	black border	
8	7' 0"	black legs	
9	7' 8"	2 <sup>nd</sup> electric (circuits 78-101) – Rep Plot	Fixed
10	8' 4"		
11	9' 0"		
12	9' 8"		
13	10' 4"		
14	11' 0"	black border	
15	11' 8"	black legs	
16	13' 2"	acoustic shell ceiling #2	Fixed
17	13' 8"		
18	14' 4"	3 <sup>rd</sup> electric (circuits 102-125) – Rep Plot	Fixed
19	15' 0"		
20	15' 8"		
21	16' 4"	black border	
22	17' 0"	black legs	
23	17' 8"		
24	18' 4"	full stage black traveler (guillotine or travels)	Fixed
25	19' 8"		
26	20' 4"		
27	21' 0"	acoustic shell ceiling #3	Fixed
28	21' 8"	black border	
29	22' 4"	black legs	
30	23' 0"		Fixed
31	23' 8"	4 <sup>th</sup> electric (circuits 126-149) – Rep Plot	Fixed
32	24' 4"		
33	25' 0"		
34	27' 1"	4A electric (4 par bars as backlight)	Fixed
35	27' 8"		
36	28' 4"	acoustic shell ceiling #4	Fixed
37	29' 0"		
38	29' 8"	black border	
39	30' 4"	black legs	
40	31' 0"		
41	31' 8"	5 <sup>th</sup> electric (circuits 150-179) – Rep Plot	Fixed
42	32' 4"		
43	33' 8"	black legs	
44	34' 4"	seamless natural white muslin cyc w/bottom pipe	
45	35'	full stage black	

\*RED – These line sets may be taken to the grid only.

\*BLUE - These line sets may be taken down or moved around to suit your needs, please discuss during advance.

\*GREEN - These line sets make up our Repertory Light Plot which can be altered; please discuss during advance.

\*PURPLE - These line sets may be taken to the grid only.

**\*\*Please Note: If a full strip is needed on stage; all line sets will be gridded, unless discussed in detail during advance process.**

# AUDIO

	Placement of Equipment	Type of Equipment
Main Arrays	Stage Left + Right Arrays (Hung on ½ ton motors)	24 Meyer M'elodie   12 per side
	Center Cluster (Hung on a 1-ton motor)	10 Meyer Mina
Front Fills	Subs	2 Meyer HP-700
	On front of stage or house floor if stage stairs are in use	2 Meyer Mina
Console	FOH Mix Position – 127' from stage	Yamaha QL5 Digital Mixing Console
	MON Mix Position - SL	Yamaha M7CL Mixing Console
Snake	Located in Audio Control Room, fed via patch panels located DSL, DSR, and Orchestra Pit	DigiCo SD Rack

## MONITOR SPEAKERS

2 – Meyer UM-100P powered wedges  
2 – Meyer UM-1p powered wedges

2 – Meyer MJF-212 powered wedges  
4 – L'acoustic 108P powered wedges

## DI | STAGE BOX | PRE-AMP CATALOGUE

Direct Boxes	4 Radial J48 Active Direct Boxes	4 Whirlwind IMP 2 DI's (passive)
	4 Whirlwind Director DI's (passive)	1 Whirlwind pcDI Stereo Computer Interface
Stage Boxes	2 Wireworks MMB 19 channel stage input boxes	2 Wireworks MMB 6 channel stage input boxes
	2 Wireworks MMB 12 channel stage input boxes	All necessary G-Block connectors and cables

**SNAKE PULL FROM FOH to ORCHESTRA PIT IS 250'**

**Communications** Clear Com permeant access points throughout the theatre. ClearCom Headsets + Belt packs - XLR Inputs. HME Digital Wireless Headsets + Belt packs

## IN HOUSE MICROPHONES

Wireless Microphones			Dynamic Microphones		
#	Type	Notes	#	Type	Notes
4	Shure QLXD 124/85 (SM58hh, plus lav/bodypack) J50 Band	4 countrymen E6 headsets	3	Shure SM57 LC	
2	Shure UR2 UHF-R transmitters w/ KSM	9 - capsules	2	Shure Beta 91A	
1	Shure UR-4D Diversity 2-channel receiver	400 – hz range	4	Shure Beta 58A	w/ accessories
1	Sennheiser ew-100 wireless handheld		4	Shure Beta 57A	w/ accessories
			1	Shure Beta 52A	w/ accessories
			3	Shure SM 58-LC new	w/ accessories
			1	SM 58	vintage
			1	Shure SM 58-S - PG58	switched
			2	SM 57-LC	w/ accessories
Condenser Microphones			Antenna Distribution Systems		
2	AKG C 414-XL-IIST	pair w/ accessories	1	Shure UA845UWB	
2	AKG SB-300B w/CK 91 cartridges	w/ accessories	1	Shure UA845	
4	Beta 98S	w/ accessories + mounting hardware			
2	SM-81 LC	w/ accessories			

*A variety of XLR and microphone stands are available in house*

# ELECTRICS

## Hanging Positions:

Position	Details	Available Circuits	Distance from DS Center
<b>Box Booms</b>	Two box booms are located balcony left and right. Currently our rep plot has them outfitted with 8 ETC Source4 10° 750w fixtures.	12 stage-pin per side 7 horizontal pipes avail. Circuits 1-12 HL Circuits 25-36 HR	87'
<b>Balcony Rail</b>	Currently our rep plot has the rail outfitted with a general stage/apron wash as well as our house projector which is hung at center. <b>Please inform us of anything you'd like to hang as we do have weight restrictions.</b>	22 stage-pin circuits available	55'
<b>Onstage Drops</b>	Three (3) drop boxes per side from grid iron SL + SR. Socapex multi-connectors, terminate to house dimmer racks.	Four (4) breakouts of stage-pin available per drop	N/A
<b>Floor Pockets</b>	Three (3) pockets per side SL + SR and one (1) center	Three (3) circuits per pocket	N/A
Please note there is NO cove position in our house!			

## Available House Lighting Equipment:

Equipment	Details	Additional Equipment	Notes
<b>Dimmers</b>	ETC Sensor Dimmer Rack		Installed summer 2012
<b>Consoles</b>	1 – ETC Element 500 Console	2 -Touch screens	
<b>Fixtures</b>	96 – ETC Source 4 Pars <i>Very Narrow, Narrow, Medium, and Wide Lenses Available</i>	24 – 36° ETC S4 Leko	<u>All include:</u> C-Clamp Color Frames Safety Cable  120 – size “A” pattern holders  C-clamp, safety
	24 - 10° ETC S4 Leko	24 – 50° ETC S4 Leko	
	24 – 19° ETC S4 Leko	6 – SKY CYC 3 section	
	24 – 26° ETC S4 Leko	16 – 6 Circuit Lamp Bars	
	8 – ovation LED Battens		
<b>Cable</b>	11 – 50’ 12/14 multi	1 – 100’ DMX	
	8 – 75’ 12/14 multi	Assorted adaptors, breakouts, etc....	
	8 – 100’ 12/14 multi		
<b>Spot Lights</b>	2 - Lycians 1290s	Power, Gel Frames	Located 153’ from downstage centerline
Please NOTE! FOH to Stage is a minimum of 250’ of cable			

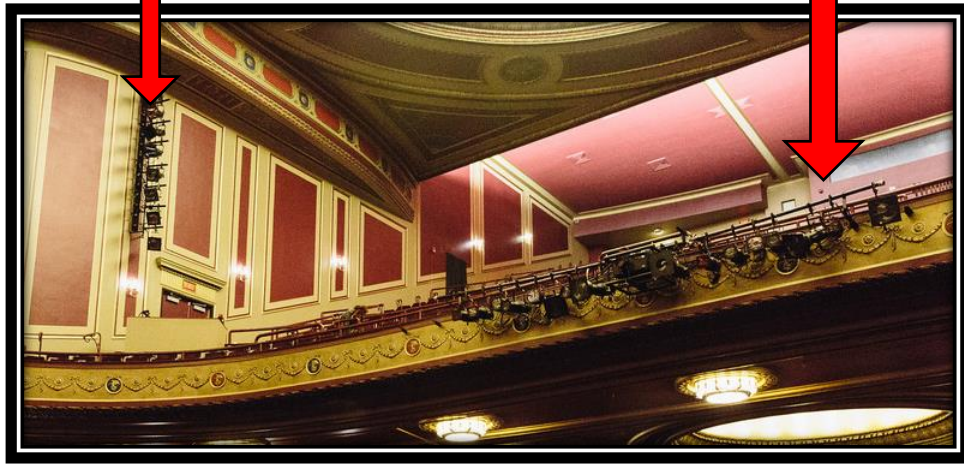
# FOH LIGHTING POSITIONS

## FOH Box Booms (HL + HR)

Each boom holds the below fixtures from our house repertory plot.

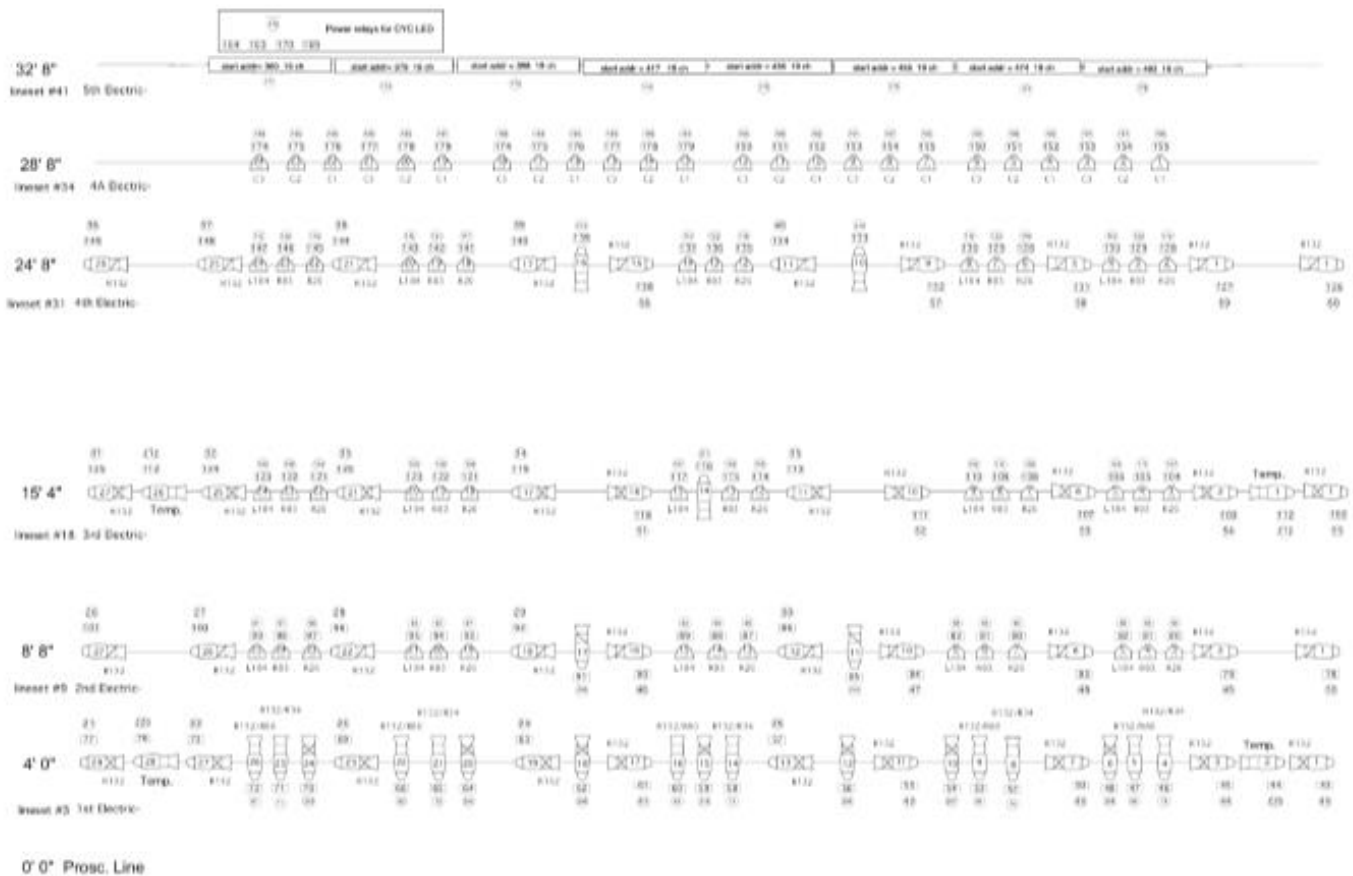
## FOH Balcony Rail

The FOH balcony rail holds the below fixtures from our house repertory plot.



<u>FOH Box Booms HL + HR</u>		<u>FOH BALCONY RAIL</u>	
FROM TOP TO BOTTOM; EACH SIDE HOLDS THE FOLLOWING:		FROM LEFT TO RIGHT, THE BALCONY RAIL HOLDS THE FOLLOWING:	
HOUSE LEFT	HOUSE RIGHT		
#1 ETC S4 10° 750W	#1 ETC S4 10° 750W	#1 ETC S4 26° 750W	#9 ETC S4 10° 750W
#2 ETC S4 10° 750W	#2 ETC S4 10° 750W	#2 ETC S4 26° 750W	#10 ETC S4 26° 750W
#3 ETC S4 10° 750W	#3 ETC S4 10° 750W	#3 ETC S4 10° 750W	#11 ETC S4 10° 750W
#4 ETC S4 10° 750W	#4 ETC S4 10° 750W	#4 ETC S4 26° 750W	#12 ETC S4 26° 750W
#5 ETC S4 10° 750W	#5 ETC S4 10° 750W	#5 ETC S4 10° 750W	#13 ETC S4 10° 750W
#6 ETC S4 10° 750W	#6 ETC S4 10° 750W	#6 ETC S4 10° 750W	#14 ETC S4 26° 750W
#7 ETC S4 10° 750W	#7 ETC S4 10° 750W	#7 ETC S4 26° 750W	#15 ETC S4 26° 750W
#8 ETC S4 10° 750W	#8 ETC S4 10° 750W	#8 ETC S4 26° 750W	#16 ETC S4 10° 750W
		HOUSE PROJECTOR @ C	

## HOUSE REPERTORY LIGHTING PLOT

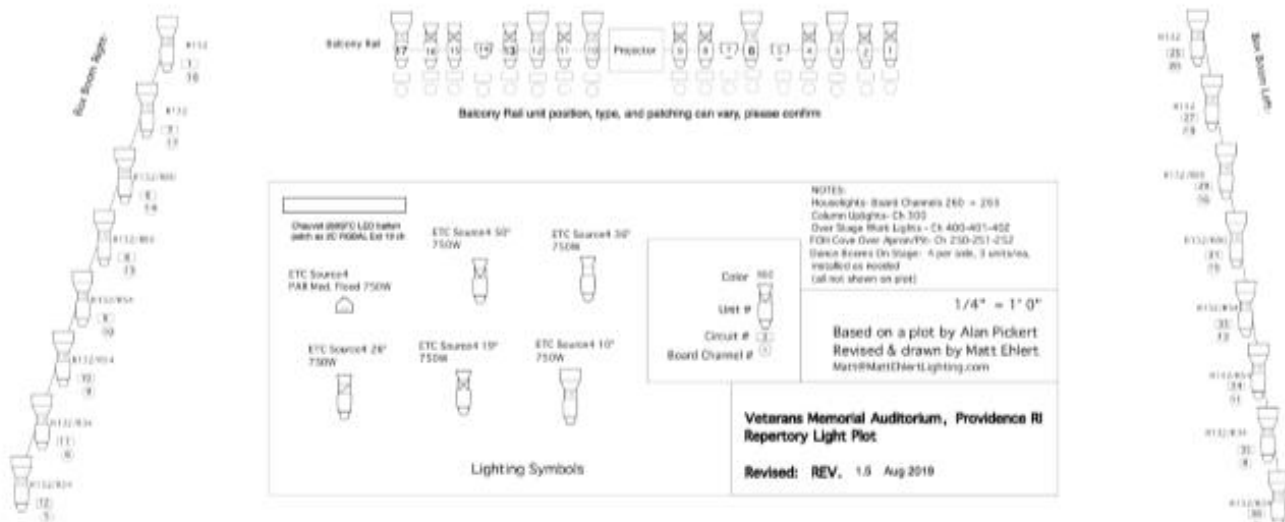


8' 0" DS Edge of Apron Curve

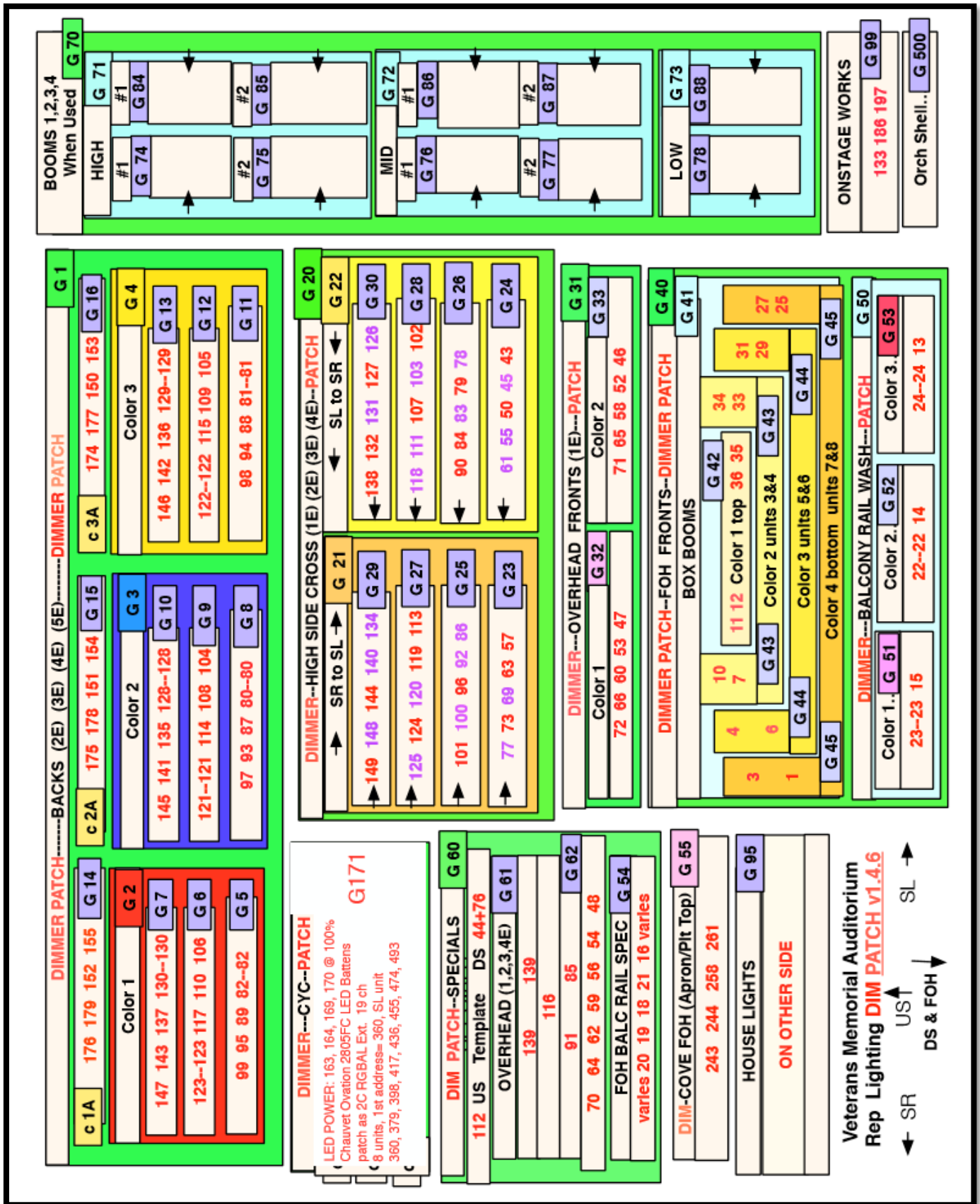
Distance (not to scale) to Bulcomby Rail 45' 0"

Distance (miles to state) to New Mexico 55.07

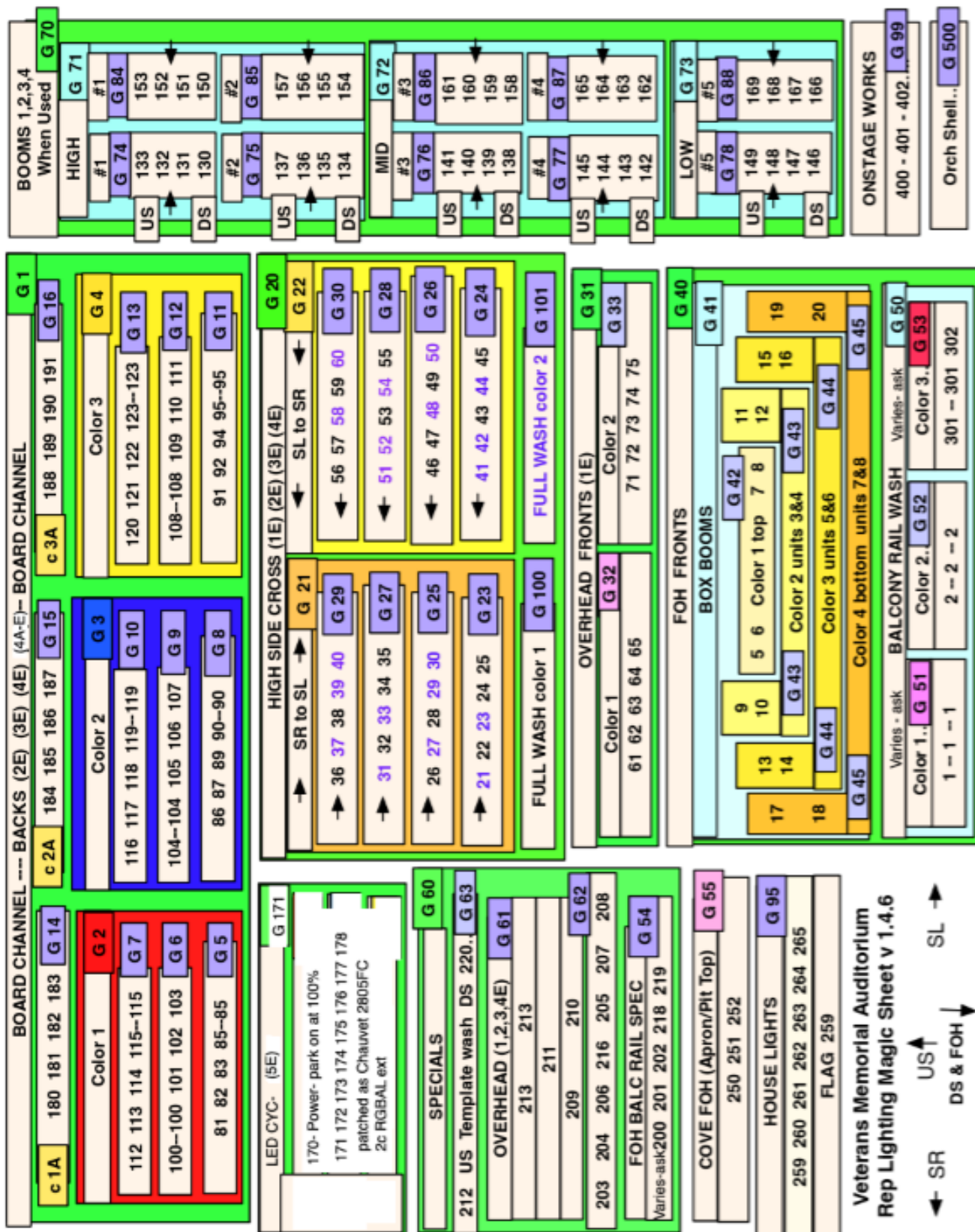
Distance (not to scale) to Box Borne 55° 0'



# HOUSE REPERTORY DIMMER PATCH



# HOUSE REPERTORY MAGIC SHEET



# VIDEO + PROJECTION

	Description	Location   Notes
<b>Projectors</b>	Christie 14K Digital Projector WU14K-M	Mounted on Balcony Rail
<b>Lenses</b>	1.5-2.0 SX Roadster Lens	1.45-1.8 HD Roadster Lens
<b>Switcher</b>	Roland V-40HD Multiformat Switcher	With monitors and MacBook Pro laptop
<b>Screens</b>	10' x 17' Da-Lite Deluxe Duel Vision Screen	Available accessories: Hanging kit, Freestanding legs, Black dress kit. Front or rear projection.
	36' x 22' Da-Lite Matte Projection Screen	Permanently hung on lineset #5, 4'-4" from plaster line
<b>Accessories</b>	A variety of HDMI, SDI, DVD, Blu-ray and adapters available	Please note that our SDI cable will not transmit Blu-ray because of copyright



# STAGE GOODS

## Available House Soft Goods (fixed\*)

- 1 royal purple main drape, 28'h x 28'w (opening: guillotine or traveler) \*
- 1 royal purple fixed valance at a 23'-7" trim\*
- 1 royal purple valance/border downstage of main drape (adjustable trim) \*
- 6 pairs of Black Legs 28'h x 13'w
- 4 black Borders
- 1 full stage black out 28'h x 52'w
- 1 pair of black panels 28'h x 28'w (set at midstage (opening: guillotine or traveler)
- 1 black sharks tooth scrim 28'h x 52'w
- 1 natural, seamless muslin Cycloram



**\*\* All available in-house soft goods are rated "IFR" (Inherently Flame Retardant)**

### Risers, Platforms, & Staging

- o 4 Wenger Choral Risers 3' x 8' with 8" legs
- o 4 Wenger Choral Risers 3' x 8' with 16" legs
- o 4 Wenger Choral Risers 3' x 8' with 24" legs
- o 8 Wenger signature Choral Risers with 4-step capacity (back and side rail options)

### Marley Dance Floor

- o ROSCO Brand dance floor: black on one side, grey on the other.
- o Fully covers stage

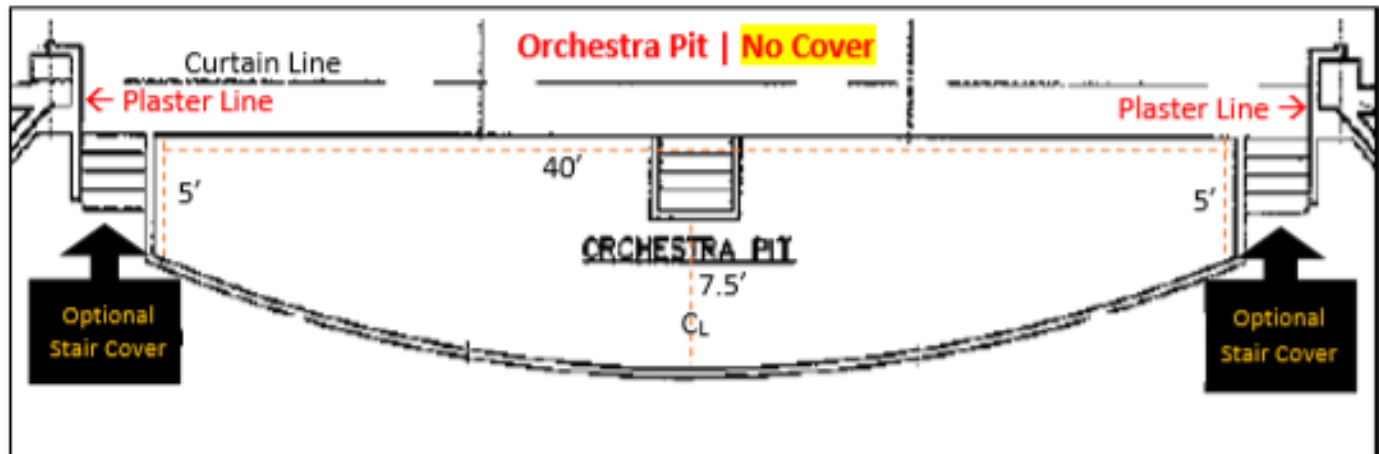


### Orchestra Shell + Accessories

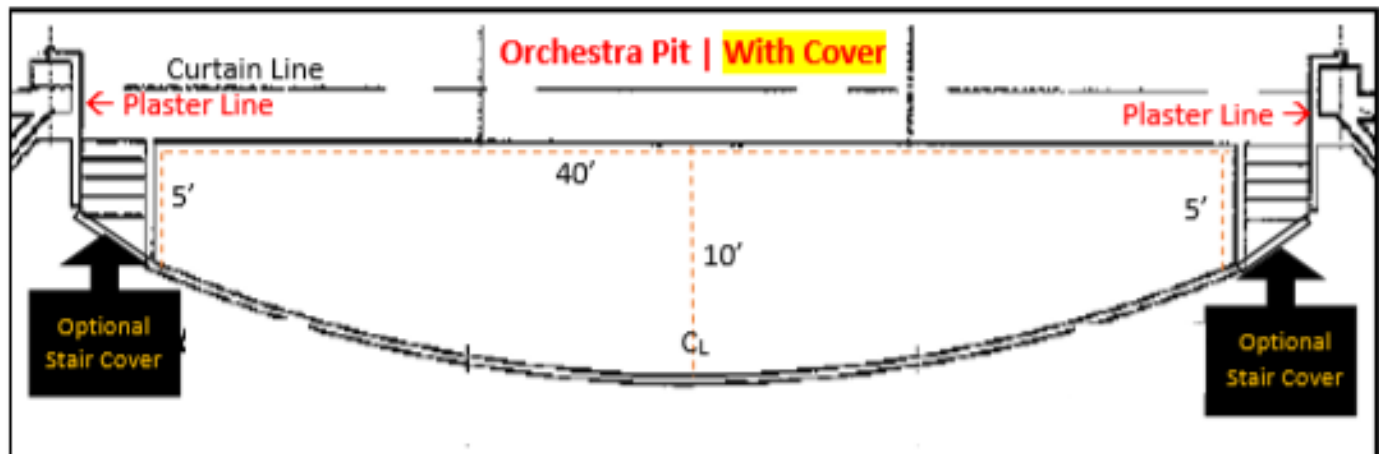
*The VETS is the principal home of the Rhode Island Philharmonic Orchestra & Music School; therefore, we have the privilege of having the following equipment and accessories available. If interested, please let us know during your advance. This will incur an additional labor call.*

- o Deployable Wenger "Diva" acoustic symphony shell with accompanying Wenger "concert master" roof.
- o When not in use, the roof is flown out on 4 separate line sets; these are permanent.
- o Shell walls are stored in loft above stage on the SL side and otherwise do not interfere with show operations.
- o 73 x Wenger "symphony" orchestra chairs
- o 5 x Wenger "symphony" cello chairs
- o 72 x music stands (no lights available)
- o 65 x steel folding chairs





Generally, our pit cover does not get removed unless specifically specified by a tour. Stair plugs (SL & SR) may be removed for any show (discuss in advance). There is enough room for 25 chairs in our pit with greenroom access through a center door for musicians.



Our pit cover brings the show closer to the audience without a huge gap. If you would like the pit removed, it would be an additional 8h labor call that would have to happen prior to your load IN and be restored once you have left. Schedule permitting.

# SPECIAL EFFECTS RULES + REGULATIONS

Due to state laws and building requirements there are specific guidelines that must be followed if any kind of special effects are being used in our venue. Our stage is equipped with a deluge firewall system.

We have beam smoke sensors in the house as well as throughout the venue. These sensors **MUST** be turned off before any atmospheric effects are tested or run. Our fire panel may **ONLY** be turned off by City Fire Command Detail which is booked 1.5h prior to advertised event start time. **If there is a need for a detail prior to the 1.5h you must advance this with the production manager** (detail fees will apply)

## **Confetti**

The venue allows paper or eco-friendly confetti | NO MYLAR confetti allowed  
Additional cleaning fees may apply.

## **Haze | Fog**

As per Rhode Island State law; No haze or fog may be run in the building without a Fire Command Detail present. Please advance in detail your haze or fog needs so that we can plan accordingly. Fire Command Detail must be present to turn off Fire Panel which is booked 1.5h prior to advertised event start time.

**If there is a need for a detail prior to the 1.5h for lighting focus etc... you MUST advance this with the production manager** (detail fees will apply). The venue's alarm system is intertwined with the hotel next door, if the atmospheric effect becomes too thick, it may impact the alarms in both venues. We will work with you on a case by case basis to address concerns you may have.

## **Dry Ice**

Dry ice is allowed, please be reminded to bring your own coolers and gloves. We do not dispose of leftover ice. Please let us know if you need vendor information.

## **Pyrotechnics**

As per Rhode Island State law if there is an open flame (open flame devices are defined as candles, torches, butane burners or any other flame producing device) you will need to download and fill out the proper pyrotechnics permits found at: [www.fire-marshal.ri.gov/testingforms/forms.php](http://www.fire-marshal.ri.gov/testingforms/forms.php) (discuss during advance) - some limitations will apply.

## **Snow | Bubbles**

## **Strobe Light**

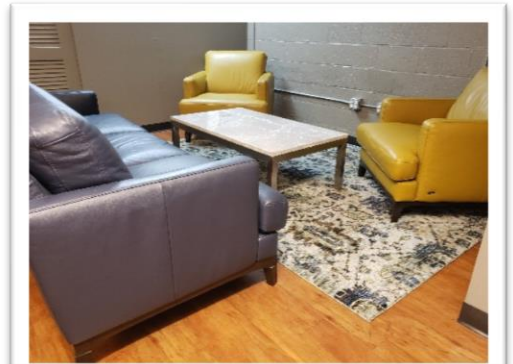
If using strobing effects, please denote this during advance so that we may inform our patrons. Please let us know if you will be posting signage.

## WARDROBE, PRODUCTION OFFICE, & GREENROOM

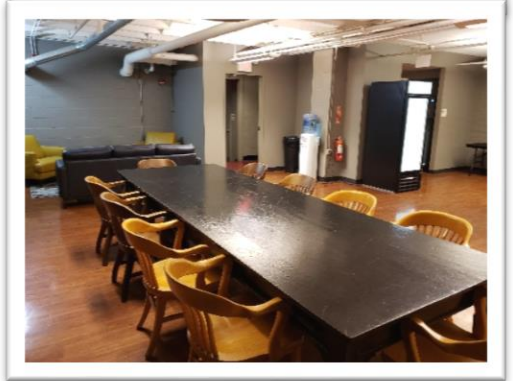
- Wardrobe Room is located at the sub-stage level which is accessed via SR stairs, SL freight elevator, or street; and is equipped with the following:
  - 2 high efficiency washer & dryer sets (please supply your own laundering supplies)
  - A large deep double sink is available for hand washing.
  - 2 ironing sets
  - 1 steamer
  - 4 rolling wardrobe racks



- Production Office is located backstage right - stage level; it is equipped with the following
  - 2 wall-to-wall tables
  - 6 chairs
  - respectively, this may be used as a dressing room for larger tours.



- Greenroom (43' x 40') is located at the sub-stage level which is accessed via SR stairs, SL freight elevator, or street; and features:
  - 3 additional unisex restrooms
  - pantry, sink, glass front refrigerator, 80lb ice machine
  - large dining table with chairs
  - foosball table
  - leather couch with accompanying chairs, & marble coffee table
  - If sound or video feed is needed for greenroom, please delineate in advance, as this will need to either be provided by tour, or equipment rented.
  - Access to the Orchestra Pit is in the greenroom



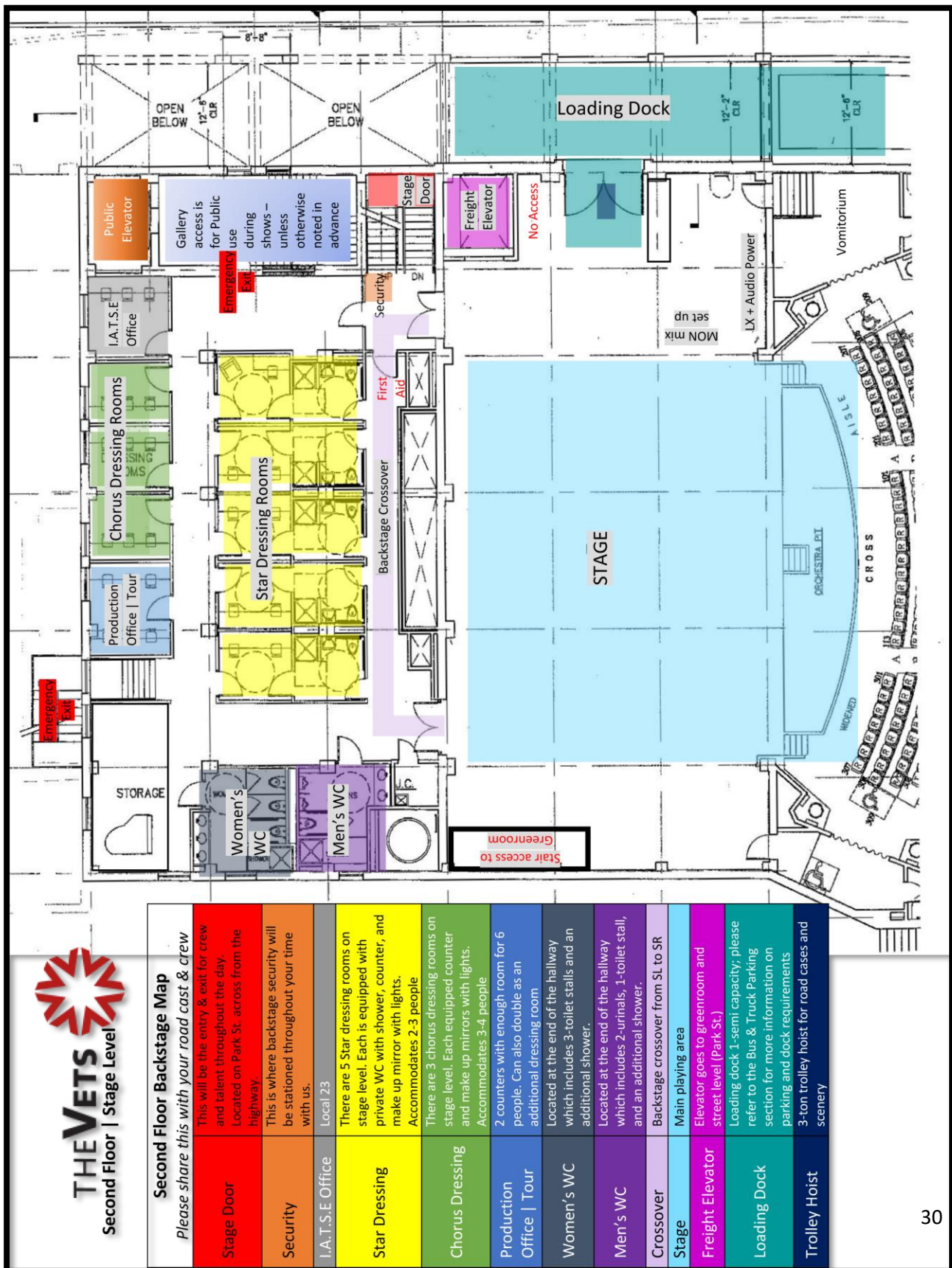
## DRESSING ROOMS + BACKSTAGE LAYOUT

The VETs is equipped with the following backstage rooms located on the stage level (level #2) and one floor above (level #3) of the building:

- Five (5) star dressing rooms, equipped with private bathroom and shower, counter, and makeup mirror with lights, (a small couch, and mini-refrigerator; when available). Star rooms typically accommodate two (2) to three (3) people.
- Four (4) chorus dressing rooms equipped with makeup mirrors with lights. Chorus rooms typically accommodate four (4) people comfortably.
- One floor up (level #3) the layout mirrors the 2<sup>nd</sup> floor with five (5) star dressing rooms and five (5) chorus dressing rooms (there are no counters or make up mirrors in these rooms).
- Restrooms are located at the end of each backstage hallway which also include a shower.
- One (1) large chorus room, located at the sub-stage level. This chorus room has space for up to fifteen (15) people and is equipped with counters and make up mirrors with lights. Access to this is via staircase from on-SR. 25' x 30'
- All dressing rooms, offices, and performer hallways are equipped with a BOSE monitor speaker and individual volume control. *(unavailable in greenroom or lg chorus room)*



## 2<sup>ND</sup> FLOOR GROUND PLAN | STAGE LEVEL



3<sup>RD</sup> FLOOR GROUND PLANS



Third Floor Backstage Map	
Please share this with your road cast & crew	
Stage Door Stairwell	This stairwell leads to and from the stage as well as the Park St. entrance, located on Park St. across from the highway.
Star Dressing	There are 5 Star dressing rooms on stage level. Each is equipped with private WC with shower, counter, and make up mirror with lights. Accommodates 2-3 people
Chorus Dressing	There are 4 chorus dressing rooms on level 3. Each is an empty room, if you need a table or chair, please let us know. Accommodates 4-5 people
Women's WC	Located at the end of the hallway which includes 3-toilet stalls and an additional shower.
Men's WC	Located at the end of the hallway which includes 2-urinals, 1-toilet stall, and an additional shower.
The Gallery	This is a public cross way from 83 Park St. to the Lobby of the Theater. Sometimes can be used as a M&G location
Fly Gallery	Access via ladder onstage level
Over Stage Access	Sliding barn doors on both SL & SR for cable ties, additional equipment, etc.... if necessary

## CATERING + HOSPITALITY SERVICES

*The following are caterers that The VETS has used in no order:*

<b>Millonzi Fine Catering</b> 11 Curson St. West Warwick, RI 401-615-7891  Kevin Millonzi   Chef	<b>Just Ellen's INC.</b> 635 Division Rd. East Greenwich, RI 02818 401-419-1614  Ellen LoConto   Chef
---	--

*An updated menu binder is in the Tour Production Office upon arrival.*

## The VETs Business Directory

The following list of businesses are not affiliated with PFM or The VETS and are in no order. These are merely suggestions; If you are looking for something specific, please let us know and we will be happy to guide you in the right direction.

### Health | Wellness

Acupuncture	Providence Community Acupuncture 1055 Westminster St. Providence, RI 02903	401-272-2288
	Christine Monteiro, D.A 144 Waterman Street, Suite 5, Providence, RI 02906	401-272-2288
Chiropractors	Dr. Douglas M. DeCubellis 143 Westminster St., Providence, RI 02903	401-521-1900
	Dr. Amy Westrick 511 Broadway, Providence, RI 02909	401-453-2225
Dental	Dr. Carl Cotoia, DDS 183 Waterman Ave. Providence, RI 02906	401-831-8998
	Dr. Paul J. Matrullo DDS 1280 Park Avenue Cranston, RI 02910	401-943-0644
	Dr. Jean Arthur 372 Ives St. Providence, RI 02906	401-862-6032
Dermatology	SkinPros 1287 North Main Street Providence, RI 02904	401-272-2724
	Dr. Ellen Frankel 750 Reservoir Ave., Cranston, RI 02910	401-943-0761
Ear   Nose   Throat	ENT RI Ste 2A, 148 West River Street Providence, RI 02904	401-728-0140
	ENT Allergy Associates 900 Warren Ave. Ste. 303 East Providence, RI 02914	401-435-5644
	Dr. Daniel Shreve	401-434-3305

General Medicine	450 Veterans Memorial Pkwy Unit 15B, East Providence, RI 02914	
	Rhode Island Hospital 593 Eddy Street, Providence RI 02903	401-444-4000
Gyms   Fitness	Planet Fitness – Offers a 1 day \$10 pass 387 West Fountain St. Providence, RI 02903	401-865-6300
	CrossFit Providence 425 Washington Street Providence, RI 02903	401-453-2348
	VP Fitness 10 Dorrance Street, Providence, RI 02903	401-479-7099
Hospitals   Treatment Centers	Rhode Island Hospital 593 Eddy Street Providence, RI 02903	401-444-4000
	The Miriam Hospital 164 Summit Avenue Providence, RI	401-793-2500
	Women & Infants 101 Dudley Street Providence, RI 02905	401-274-1100
	Bradley Hospital   Children + Adolescent Psychiatric 1011 Veterans Memorial Parkway Riverside, RI 02915	401-432-1000
	Butler Hospital   Adult Psychiatric + Addiction 345 Blackstone Blvd. Providence, RI 02906	401-455-6200
	The Providence Center 530 North Main Street Providence, RI 02904	401-838-0188
Pharmacies	Walgreens Pharmacy 1140 North Main Street Providence, RI 02904	401-278-4901
	Stop & Shop Pharmacy 1128 Mineral Spring North Providence, RI 02904	401-727-3900
	CVS (No Pharmacy) 70 Kennedy Plaza, Providence, RI 02903	401-861-5050
Physical Therapy   Orthopedics	RI Ortho Rhode Island (Ortho Express Emergencies 777-7000 #1) 285 Promenade Street Providence, RI 02908	401-459-4001
	West bay Orthopedic + Neuro-surgery 120 Centerville Road Warwick, RI 02886	401-738-3730
	University Orthopedics 2 Dudley Street Suite 200 Providence, RI 02905	401-457-1500
	Performance Physical Therapy 49 Seekonk Street Providence, RI 02906	401-230-1126
Pediatrics	Coastal Medical Pediatrics 900 Warren Ave., East Providence, RI 02914	401-421-6481
	Hasbro Children's Hospital 593 Eddy Street LL Providence, RI 02903	401-444-4471
	East Side Pediatrics 285 Governor Street 3 <sup>rd</sup> Fl Providence, RI 02906	401-383-4411
Podiatry	Dr. Joseph DeCesare 201 Broadway, Providence, RI 02903	401-421-9167

	University Foot & Ankle 235 Plain Street STE 201 Providence, RI 02905	401-861-8830
Salons   Day Spas	Coiffurium East Side 800 Hope Street Providence, RI 02906	401-331-1115
	Arrow Salon 230 Rochambeau Avenue Providence, RI 02906	401-521-1457
	Impulse Hair Designs The Arcade   65 Weybosset Street Providence, RI 02903	401-421-9294
	Moss Salon 114 North Main Street Providence, RI 02903	401-751-8877
	Christiaan Salon & Day Spa 4 Benefit Street Providence, RI 02903	401-521-5050
	Flipp Salon 38 Transit Street Providence, RI 02903	401-274-1981
Women's Medicine	Women's Primary Care,   Medicine Collaborative West River Center 146 West River Street 3 <sup>rd</sup> FL Providence, RI 02904	401-793-5700
	Women & Infants 101 Dudley Street Providence, RI 02905	401-274-1100
<b>Services</b>		
Bus Services	Conway Tours	800-888-4661
	Peter Pan Bus Lines	1-800-343-9999
	Viking Tours	401-847-6921
Cab Services	Yellow Cab	401-941-1122
	Laurel-Sweeney	401-521-4200
Lodging	Biltmore   The Graduate ( <a href="http://www.providencebiltmore.com">www.providencebiltmore.com</a> )	401-421-0700
	Homewood Suites ( <a href="http://www.hilton.com">www.hilton.com</a> ) 5 Exchange St. Prov., RI	401-942-2001
	Hampton Inn Hotel ( <a href="http://www.hamptoninn.com">www.hamptoninn.com</a> )	401-608-3500
	Hilton Providence ( <a href="http://www.hilton.com/providence">www.hilton.com/providence</a> )	401-831-3900
	Hotel Providence ( <a href="http://www.hotelprovidence.com">www.hotelprovidence.com</a> )	401-861-8000
	Marriott ( <a href="http://www.marriottprovidence.com">www.marriottprovidence.com</a> )	401.272.2400
	Providence Courtyard by Marriott ( <a href="http://www.Marriott.com">www.Marriott.com</a> )	401.272.1191
	Renaissance Providence ( <a href="http://www.renaissanceprovidence.com">www.renaissanceprovidence.com</a> )	401.919.5003
	Omni Hotel ( <a href="http://www.omnithotels.com">www.omnithotels.com</a> )	401-598-8000
	Hilton Garden Inn ( <a href="mailto:jpitt@wyndham.com">www.jpitt@wyndham.com</a> )	401.272.5577
Laundry   Dry Cleaning	Freeway Laundry 135 Broadway, Providence, RI 02903	401.453.0000
	The Laundry Club 140 Medway Street, Providence RI 02903	401.272.2520
	On the Go Laundry & Dry Cleaning Pick Up   Delivery Service   <a href="http://www.onthegolaundry.com">www.onthegolaundry.com</a>	401-749-6379
	Viking Tours (out of Newport) 44 Long Wharf Mall Newport, RI 02840	401-847-6921

Limo   Car Services	Sentinel Limousine & Coach Inc. 11 Clemenceau Street East Providence, RI 02914	401-434-2700
	Enterprise Rent-a-Car 90 Weybosset St. Providence, RI 02903	401-861-4408
Parking	Providence Place Parking Garage	401-270-4421
	MetroPark: Park Row West Exchange Street & Stillman Street Providence, RI	401-455-0188
	Intown Parking 131 Washington St. #203, Providence, RI 02903	401-273-9466
Post Office	Providence Main Post Office 24 Corliss St. Providence, RI 02903	401-275-8619
	Providence Post Office Weybosset Hill, Providence RI, 02903	401.421.5214