

THEVETS

Tech Packet

v.019A

One Avenue of the Arts
Providence, RI 02903
Website: www.thevetsri.com
Tel: 401.222.1467
Fax: 401.222.1466

TECH PACKET | TABLE OF CONTENTS



WELCOME LETTER FROM VETS PRODUCTION MANAGER	3
TECHNICAL + OPERATIONS CONTACTS	4
"I.A.T.S.E LOCAL 23 + THE VETS	5
LOADING PARKING DIRECTIONS	6 - 10
QUICK REFERENCE BACKSTAGE GUIDE	11
WIRELESS INTERNET	12

MAIN ENTRANCE LOBBY LAYOUT	13
SEATING CHART	14
MEASUREMENTS SEATING CAPACITIES	15

RIGGING MOTORS TRUSS LINESET SCHEDULE	16 - 17
AUDIO	18
ELECTRICS	19 - 23
VIDEO PROJECTION	24
STAGE GOODS ORCHESTRA PIT + COVER	25 - 26
SFX RULES + REGULATIONS PER THE STATE OF RI	27
WARDROBE GREENROOM PRODUCTION OFFICE	28
DRESSING ROOMS + BACKSTAGE GROUNDPLANS	29 - 31

CATERING + HOSPITALITY SERVICES	32
LOCAL BUSINESS DIRECTORY	32 - 35

1/2019

Welcome to The VETS!

Whether you are part of a technical crew, performer, or potential client, I welcome you to one of Providence and Rhode Island's premiere and iconic theatrical, performance, and event space! Our goal is to make your experience as smooth and productive as possible. If there is any way I can assist you with planning or to answer any questions, please feel free to reach out via email at nmuzzi@pfmcorp.com or by phone at 401.222.1467. I look forward to meeting you and making your experience here in Providence as memorable as possible!

Thank you and look forward to seeing you soon!

Nina Muzzi
Production Manager

The VETS
83 Park Street
Suite M
Providence, RI 02903

Office: 401.222.1467
Fax: 401.222.1466
Email: nmuzzi@pfmcorp.com

THE VETS



TECHNICAL+ OPERATIONS CONTACTS

PLEASE USE OUR MAIN PHONE LINE FOR ANY INQUIRES UNLESS SPECIFIED – 401.222.1467

In House Directors & Managers

General Manager	Dan Schwartz	dschwartz@pfmcorp.com	401.222.1467
Office Manager	Doreen Vitale	dvitale@pfmcorp.com	401.222.1467
Production Manager	Nina Muzzi	nmuzzi@pfmcorp.com	401.222.1467
Technical Director	Amanda Motta	amotta@ppacri.org	401.574.3115
Director of Operations	Steve Pereira	spereira@pfmcorp.com	401.222.1467
Director of Marketing	Michael Gravison	mgravison@pfmcorp.com	401.222.1467
Box Office Manager	Tara Edwards	tedwards@pfmcorp.com	401.421.2787
House Manager	Patricia Lynch	plynch@pfmcorp.com	401.222.1467
Head of Security	Dave Luongo	dluongo@ppacri.org	

I.A.T.S.E Local 23 + Local 830

Business Agent IA 23	Charlie Ryan	cryan@iatse23.org	508.216.6071
Head Carpenter Rigger	John Farrell	riggeria23@gmail.com	401.527.0379
Head Electrician	Matthew Ehlert	matt@mattehlertlighting.com	401.862.4233
Head Audio	Michael Moore	mdmoore14@gmail.com	401.413.0207
Head of Props	Richard Rossi	chardrr@yahoo.com	401.447.7229
Wardrobe Business Agent IA	Debbie Voccio	debbievoccio@yahoo.com	401.527.5009
Wardrobe Steward	James Ferreria	ribeef11@aol.com	774.991.2624

MAILING ADDRESS: C/O PRODUCTION MANAGER: "NINA MUZZI" **OR** (SHOW NAME)
THE VETS * 83 PARK STREET * PROVIDENCE, RHODE ISLAND 02903

IATSE LOCAL 23 & THE VETS

Bringing experience and expertise to the stage, IATSE is the International Alliance of Theatrical Stage Employees, moving picture technicians, artists, and allied crafts, is a proud organization of industry professionals with universal goals.

Because Local 23 has had a long history in Providence's theatrical venues, our members have worked with and supported some of the greatest names in the entertainment industry. Shows such as Lindsey Sterling, Scott Bradlees's Postmodern Jukebox, Last Comic Standing, Lyle Lovett & John Hiatt, Nora Jones, and many more have passed through our halls.

Currently IATSE 23 members support shows in Providence at the Providence Performing Arts Center, Dunkin Donuts Center, The Vets, as well as live concerts in arenas, outdoor venues, colleges, and casinos.

Members of IATSE are highly qualified and skilled individuals, dedicated to making your event a great success. They take pride in their history of providing first-rate technical and logistical support, even as technology is ever evolving.

If you are booking an event at The VETS and would like a labor quote, please inquire with our Production Manager, Nina Muzzi (nmuzzi@pfmcorp.com).

The VETS Stagehand rates as of 10/1/18			
	Regular	Overtime	Double Time
Department Heads	\$25.29	\$37.94	\$50.58
Stagehands	\$23.20	\$34.80	\$46.40
Riggers	\$34.80	\$52.20	\$69.60
Truck	\$64.21	-	-
Reload	\$20.00	-	-
In Costume	\$20.00	-	-

Updated 10/1/18

* Rates are subject to change without notice

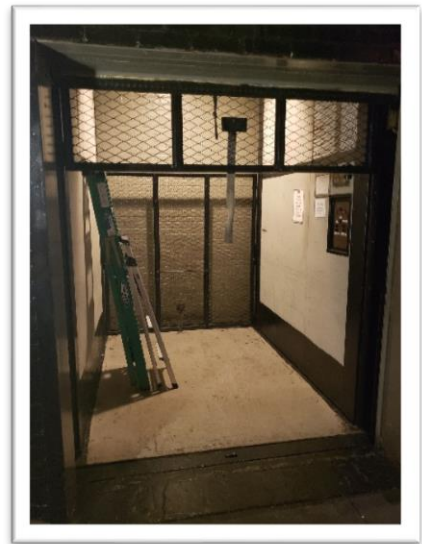
LOADING | PARKING | DIRECTIONS

Elevated Loading Dock: At truck height featuring a hydraulic leveler directly onto stage left. Width of the dock clearance is 10' 6" wide x 14' high. We also have an inhouse ramp that we can use to bring in equipment.



Due to Rhode Island Fire Code the trailer can remain in the loading dock during performances however the cab must detach and park outside the facility (discuss during advance).

Freight Elevator: Located on Park Street, going down the hill. From street level elevator goes to greenroom (under stage) as well as stage level on USL. Elevator dimensions: 7'7" deep x 5'10" wide. Elevator door height: 5'10" wide x 6'8" high.



Trolley Hoist

Featured immediately inside the loading dock, on stage, is a 3-ton trolley-hoist motor mounted on an I-beam for assistance stacking and un-stacking cases.

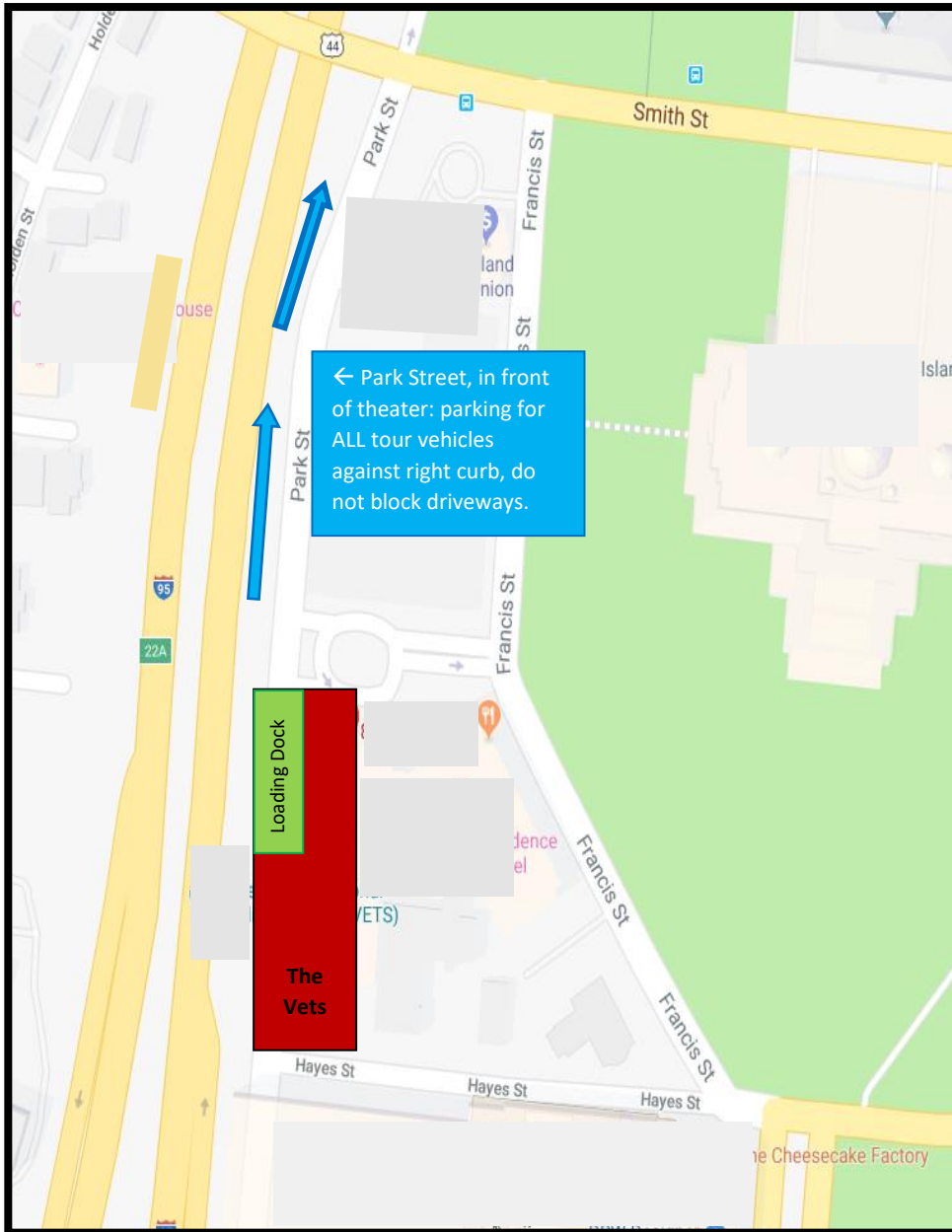
LOADING | PARKING | DIRECTIONS

Highway View Loading Map Please share this with your road cast & crew	
Main Office Entrance	83 Park St. Providence, RI 02903 Elevator access (must let security know, door to 2nd floor stays locked).
Stage Door	This door leads to and from backstage including dressing areas. 3 flights of stairs up, security guard.
Freight Elevator	This elevator is located next to the Stage Door, to the left. Loading is perpendicular to building.
Greenroom Access	Door must be opened by security for load in purposes only. This door goes up a half flight of stairs to the greenroom and wardrobe area.
Loading Dock	Room for up to 1 semi. Trailer may stay for show, but cab must be removed and parked in designated tour area. Back in only to stage level or we have a ramp option.
Park Street	Park St is on an incline, most shows we close the top portion of the street for tour parking. This will be discussed during your advance.
This view is from the highway; R95 N & S	

LOADING | PARKING | DIRECTIONS

- There is the ability to park one (1) 53' trailer on the SL Loading Dock.
- For additional tour parking, Park Street is available to park tour vehicles. From our front circle to the traffic light at Smith Street.
- Long term truck parking is available at Exit 5B on Interstate 95 - 20 Minutes South of Providence.

NO SHORE POWER IS AVAILABLE AT THIS TIME.



This map is NOT to scale, distances are CLOSER than they appear

From Points North

- 95 South to Exit 22A-22B – 22C for RI-10 W/Providence Pl towards US-6W
- Keep right to continue on Exit 22C
- Turn right onto Providence Pl
- Providence Pl turns slightly left and becomes Park St.
- The VETs will be on your right

From Points South

- 95 North to Exit 22A-B-C
- Take Exit 22A-B-C for US-6 W/RI 10 W towards Hartford CT
- Keep right to continue on Exit 22C, follow signs for Providence Pl and merge onto Providence Pl
- Providence Pl turns slightly left and becomes Park St.
- The VETs will be on your right

From Points East

- I-195 W to
- Keep right to continue on US-6 W
- Merge onto I-95 N/US-6 W
- CONTINUE – From Points South

From Points West

- US-6E to Downtown Exit
- Take Dean St. Exit from US-6 E
- Continue on Dean St. Take right onto Providence PL
- CONTINUE – From Points South

LOADING | PARKING | DIRECTIONS



Upon entering the area, you will see the **Main Entrance** to The Vets.

Note the **Loading Ramp*** to the right. This is for loading and unloading tractor trailer trucks. Once your truck(s) is unloaded please have your driver remove the cab and park it in the designated area.

Stage Door is marked as such; staff, crew, and talent will enter through this door prior to main entrance being open.

Bus & Trailer Cab Parking is area between Smith St. and front entrance of The Vets. Parking will be designated via advancement with Technical Director.

Main Entrance is as shown in photo above.

The **Gallery** is the general public cut through from Park St. to the main lobby.

Loading Dock* is as shown in photo above.

Stage Elevator* is used as a secondary loading location.

Stage Door is marked as such; staff, crew, and talent will enter through this door. (3 flights up to stage)

Park Street Entrance is used by the general public to enter building.



LOADING | PARKING | DIRECTIONS

Due to Rhode Island Fire Code the trailer can remain in the dock during performances however the cab must detach and park outside the facility (discuss parking during advance).

During residency of some tours and events it may be necessary to close some of the surrounding streets for tour parking needs. This will be discussed in your advance process. Please let us know roughly what time your caravan will arrive/depart from the venue so that we pull the proper permits.

No Shore power or water hook ups are available at this time, however you may run a generator, if needed.

Guest Parking

Mall Parking | Secure paid parking is available at the Providence Place Mall North Entrance, directly behind The Vets at a rate of \$2.00 for the first 5 hours.

To exit the lot on foot, take the north elevators or stairs located at the rear of BOSCOV to level “B”. This will bring you to street level directly behind the theater. Proceed north up the sidewalk either side to the theater front entrance.

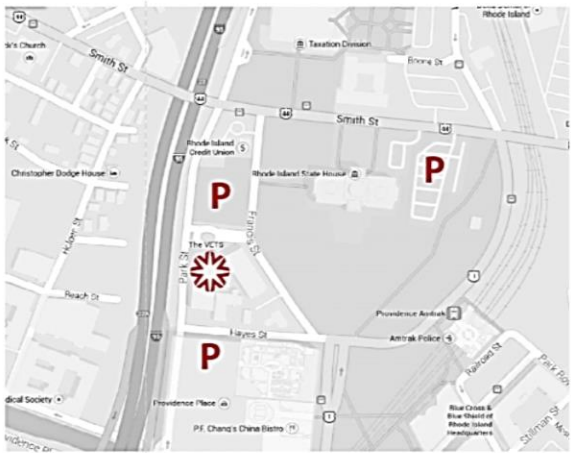
VETS Lot | The VETS parking lot is open for most shows on a first come first serve basis and is \$15.00 per vehicle.


Handicapped Parking | Handicapped parking is in the front of the theater, spots are first come first serve.

Free Parking | Free parking is available in the State of Rhode Island lots on Smith Street. On-street parking is available on Francis and Smith Streets.

Parking Information

- The VETS lot located directly in front of the venue is \$15. Entrance to the lot is on Park Street.
- The Providence Place Mall garage is located directly behind The VETS. Parking is \$2 for the first 5 hours.
- Free parking is available in the State House parking lots on Smith Street (VETS guests are allowed access to this lot during VETS events regardless of signage saying state house employees only).
- On-street metered parking is available on Francis and Smith Street.



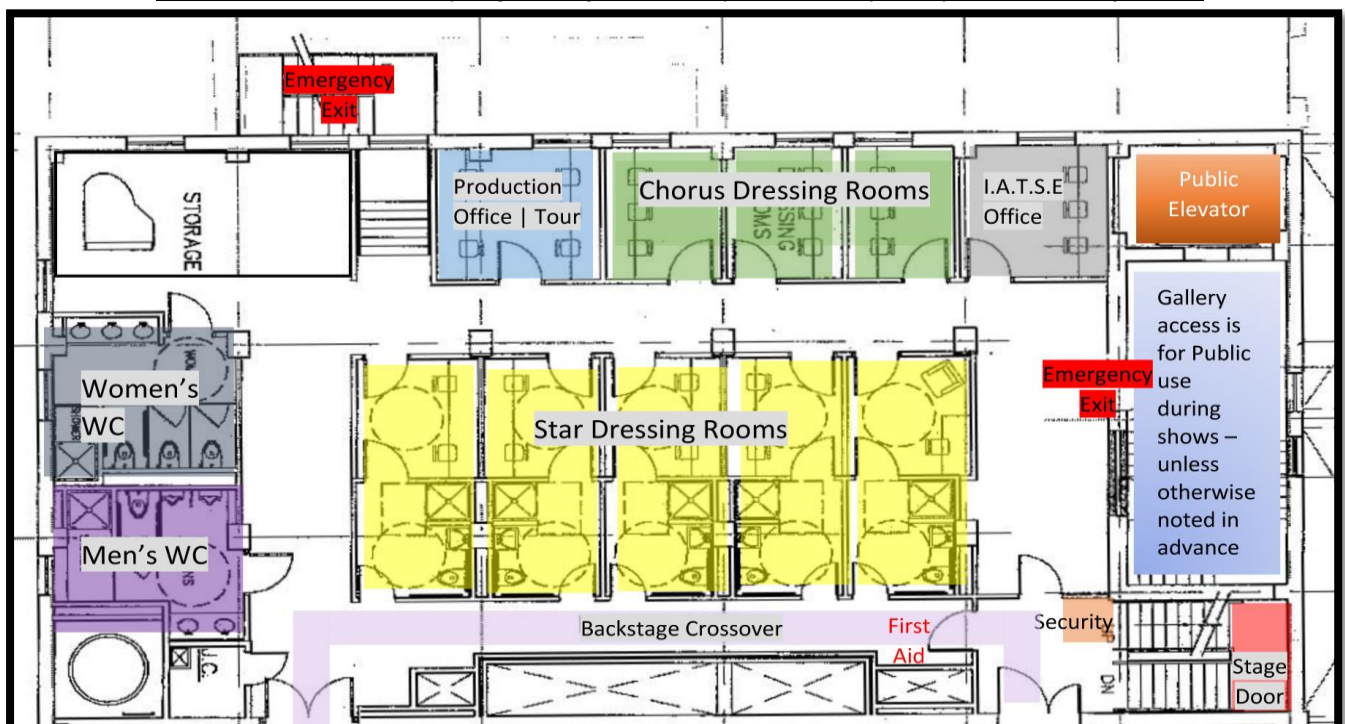
THE VETS 

Welcome to **THE VETS** in Providence, Rhode Island!

Below is some important information that you should know to enjoy your stay here with us.

Production Manager: Nina Muzzi 401-632-3820 General Manager: Dan Schwartz 248-798-7525	
Wireless Internet	Backstage has a hidden SSID. Search for: Wi-Fi: VETS-Tech83 (case sensitive) Security clearance: WPA2 Password: 4012221467 (no spaces)
Lobby Doors	1 hour prior to scheduled showtime (unless otherwise specified)
House Doors	½ hour prior to scheduled showtime (unless otherwise specified)
Curfew	12a for backstage guests, no city fine otherwise. IA overtime occurs for shows over 3h 10m. Double time between 2a and 8a.
Dressing Rooms (map below)	Dressing rooms are located on the 2 nd and 3 rd floors. Each floor has the following dressing rooms: 5 – Star Dressing rooms on left side which have their own WC w/shower 4 – Chorus rooms on the right side, no WC. (5 chorus rooms on the 3 rd floor)
Tour Production Office	Stage level, chorus room #5 is typically reserved as tour production, but may be moved if needed.
Crew Showers	All star dressing rooms have private WC w/showers Restrooms at the end of each dressing room hallway have a shower Towels are available upon request.
First Aid & AED	Both are located next to security, right before you enter SL
FOH Crossover	1. SL – through the house – to lobby 2. Through the Gallery (glass crossover) take elevator to #3, this will take you to the lobby.

Please mind the doors that you go through, some may lock behind you. If you are unsure, just ask!



THE VETS



Main Office Phone:
401-222-1467



General Manager
Dan Schwartz



VETs Website:
www.thevetsri.com



VETs Address:
83 Park Street
Providence, RI 02903

PLEASE NOTE



If you are staying at The Vets for multiple days, and would **NOT** like your dressing cleaned, please **lock** | close your door and place your trash bucket in the hallway at the end of the night.

*The VETs now has secure,
state of the art
FREE WI-FI for everyone!*

Wireless Internet

SECURE TOUR WI-FI

Go to your WI-FI settings
Search for Hidden SSID: **VETS-Tech83**
Select Security Level: WPA2
Password: 4012221467
Click **CONNECT** on prompt screen
Connected Duration: 48h
Available: backstage, dressing rooms, green room,
stage, house, and lobby

PATRON WI-FI

Name: Vets-Guest
Enter email address on prompt screen
Connected Duration: 4h
Available: lobby, house

Troubleshooting

Can't Connect? Having Problems?

Having trouble connecting to the internet? Please
call the Hospitality Network Service Desk for help.
Phone: 800-937-5010
Select: Option 2

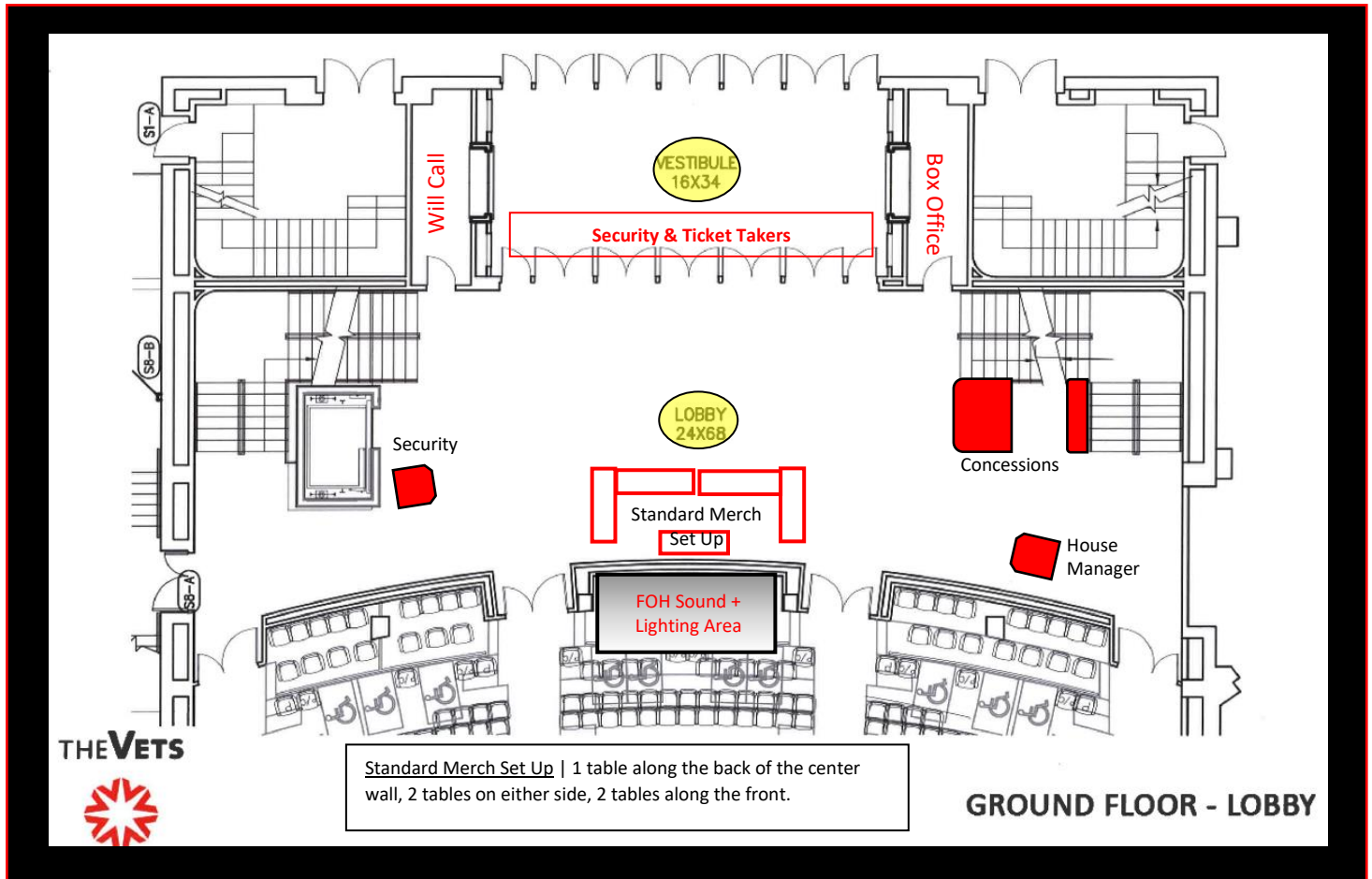
**If the Support line does not resolve any issue
in a timely manner, please contact the
following personnel:**

General Manager:
Dan Schwartz | dschwartz@pfmcorp.com
248-798-7525

Production Manager:
Nina Muzzi | nmuzzi@pfmcorp.com
401-632-3820

MAIN ENTRANCE | LOBBY LAYOUT

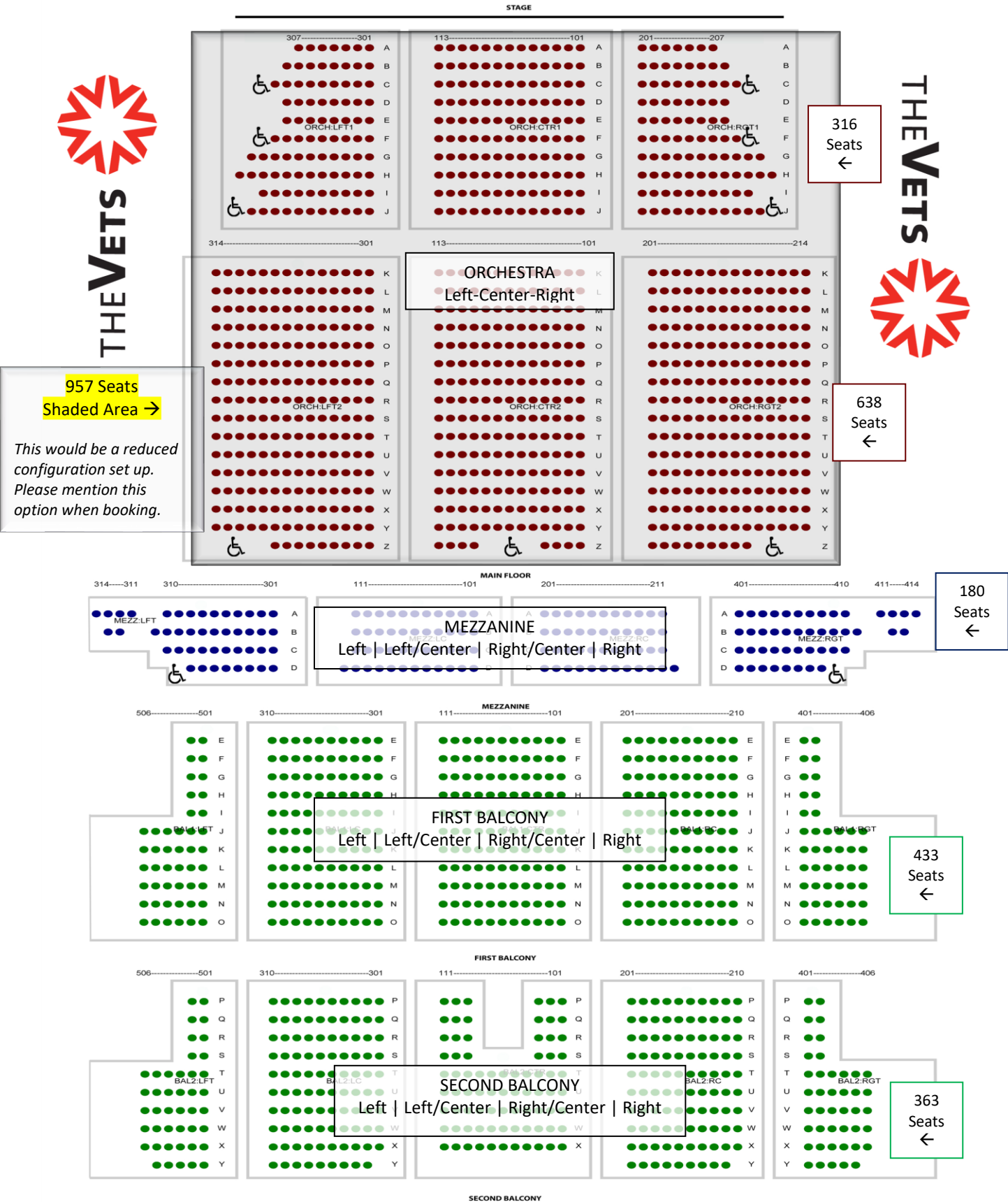
Merchandise If you are selling merch and need to load items into the lobby you can either unload at the front of the building (One Avenue of the Arts, Providence, RI 02903) and roll it right into the lobby. Your other option would be to take it from the stage and bring it through the house to the lobby. There is no ramp from the stage to the house.



Security Our Security Supervisor on duty for your event will always be stationed at the Security Podium. Fire Detail as well as Police Detail will check in with this member of security for each event. (if applicable) This security guard will also convey any show specific rules and regulations to each member of the security team per show as well as keep in contact with backstage (security guard and house production manager) if any problems arise, there need to be any escorts, or if a runner is needed.

House Manager Stationed at the House Management podium will be either Pat Lynch, our House Manager or Deb Correia, our Assistant House Manager. They will delegate aisle captains as well as ushers to their appropriate stations, handle any patron concerns or needs as they arise, as well as communicate with backstage (house production manager) if there are any show holds, or emergencies.

SEATING CHART



MEASUREMENTS | CAPACITIES

Theater Measurements	Proscenium	Width: 48' Height: 23' 7" Measurement to fixed valance
	Stage	Total Width, wall to wall: 85' Fire Curtain to back wall: 39' 6" Total Depth, lip to wall: 50'
	Wings	Stage Left: 24' (loading door & freight elevator) Stage Right: 13' (stairs to greenroom)
	Grid	Height: 65' 3" Stage to Loading Rail: 53'
	Apron	Depth: 3' 1" downstage of plaster line
	Auditorium <i>(Measurements to DS centerline)</i>	From Projection Booth: 153' From Box Booms: 55' From Balcony Rail 66' Mezz overhang: 45' From FOH Mix Position: __' House width, wall to wall: 72' From Orchestra level seating: 89'
	Orchestra Pit <i>(curved front 42' x 10')</i>	Full matching pit deck / cover is in place for most events extending the DS performance area and eliminating the gap between artist & audience. Arrangements must be made in advance if this needs to be removed for traditional orchestra pit use, seating (25) or ballet. Removal requires an 8h labor call for the removal & restore.



Seating Capacity	Total: 1,933
Orchestra Pit: No Available Seating	Mezzanine: 180
Orchestra Level: 957	First Balcony: 433
A reduced audience configuration is also available; which is Orchestra Level only. Please inquire upon booking: 975 seats.	Second Balcony: 363
	Total ADA Seats: 18

RIGGING + MOTORS + TRUSS

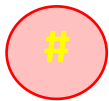
FOH RIGGING POINTS

WE HAVE 6 FOH HANGING POSITIONS.

House Left **A** is 9'-4" from CL
House Left **B** is 14'-3" from CL
House Left **C** is 19' from CL

HR MIRRORS HL

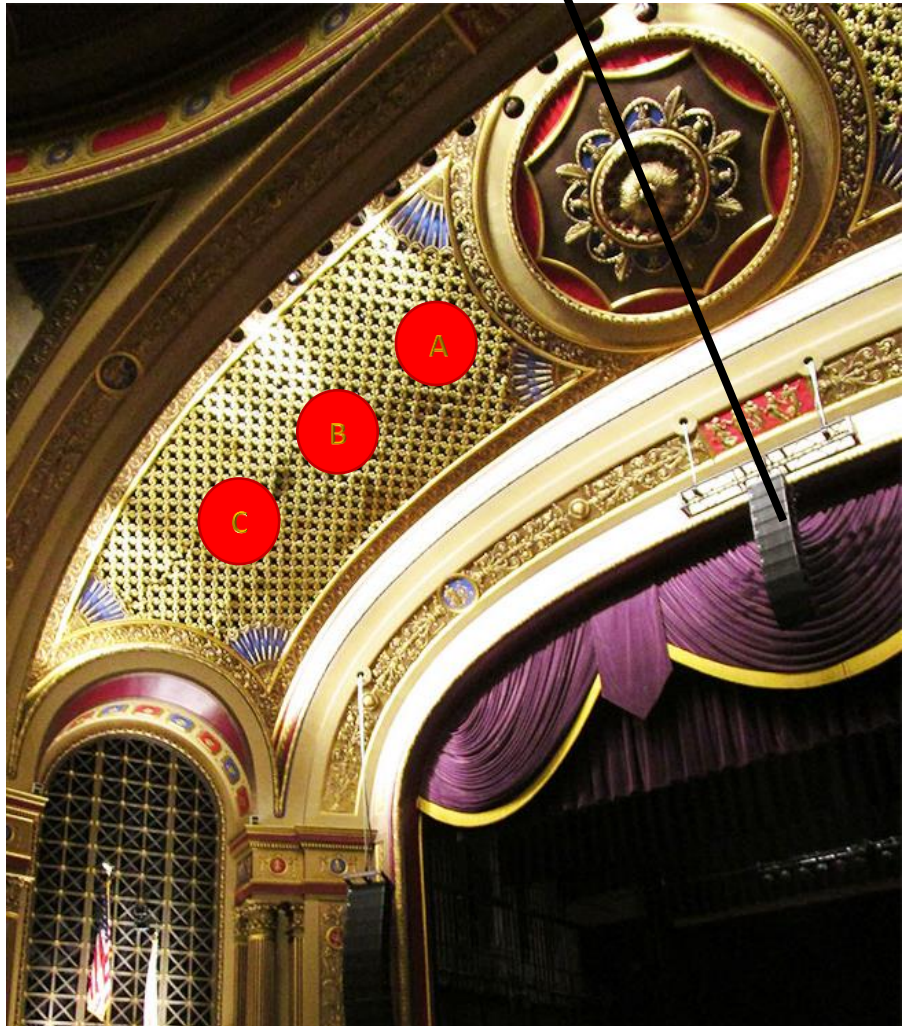
House Right **A** is 9'-4" from CL
House Right **B** is 14'-3" from CL
House Right **C** is 19' from CL



Denotes FOH
Hanging Points

STAGE RIGGING NOTE

Rigging points on stage are center;
running up and down stage and every
7'-6" from center. (Well steel only, no
midpoints unless bridled)



FLY RAIL - SR	48 LINESETS – UPRIGHT DOUBLE PURCHASE ARBOR SYSTEM		FLY-RAIL LOCATED @ 15' FROM DECK LOADING GALLERY @ 53' FROM DECK
	BATTEN LENGTH: 52'		1,2000LB CAPACITY PER BATTEN
MOTORS	6 x CM 1-TON CHAIN MOTORS		RIGGED FROM MAIN GRID 65'-3" FROM DECK
	WELL STEEL IS CENTER AND 7'6" LEFT AND RIGHT, POINTS BETWEEN THESE MEASUREMENTS WILL NEED TO BE BRIDLED.		
TRUSS + BOOMS	40 – 12: SIDE ARMS		8- 16' BOOM PIPES, 50LB. BASES, AND TIE OFFS.
	10 x THOMAS GENERAL PURPOSE TRUSS 18" x 12" x 8' SECTIONS		
ACCESSORIES + EQUIPMENT	GENIE AWP 36 LIFT	20 - 10LB SAND BAGS	32 - FIXED CHEESEBOROS

Line Set Schedule

RED Permanent * BLUE Moves * GREEN LX Rep Plot * PURPLE acoustic shell

LINE	FROM PLASTER	DESCRIPTION	NOTES
-	-4"	house valance, purple; fixed @ 23'-7"h	Fixed
1	1' 0"	adjustable house valance, purple	Fixed
STAGE	1' 8"	house main, purple (guillotine or travels)	Fixed
2	2' 4"		
3	3' 0"	1 st electric (circuits 43-77) – Rep Plot	Fixed
4	3' 8"		
5	4' 4"	movie screen (36' x 22')	Fixed
6	5' 0"	acoustic shell ceiling #1	Fixed
7	6' 4"	black border	
8	7' 0"	black legs	
9	7' 8"	2 nd electric (circuits 78-101) – Rep Plot	Fixed
10	8' 4"		
11	9' 0"		
12	9' 8"		
13	10' 4"		
14	11' 0"	black border	
15	11' 8"	black legs	
16	13' 2"	acoustic shell ceiling #2	Fixed
17	13' 8"		
18	14' 4"	3 rd electric (circuits 102-125) – Rep Plot	Fixed
19	15' 0"		
20	15' 8"		
21	16' 4"	black border	
22	17' 0"	black legs	
23	17' 8"		
24	18' 4"	full stage black traveler (guillotine or travels)	Fixed
25	19' 8"		
26	20' 4"		
27	21' 0"	acoustic shell ceiling #3	Fixed
28	21' 8"	black border	
29	22' 4"	black legs	
30	23' 0"		Fixed
31	23' 8"	4 th electric (circuits 126-149) – Rep Plot	Fixed
32	24' 4"		
33	25' 0"		
34	27' 1"	4A electric (4 par bars as backlight)	Fixed
35	27' 8"		
36	28' 4"	acoustic shell ceiling #4	Fixed
37	29' 0"		
38	29' 8"	black border	
39	30' 4"	black legs	
40	31' 0"		
41	31' 8"	5 th electric (circuits 150-179) – Rep Plot	Fixed
42	32' 4"		
43	33' 8"	black legs	
44	34' 4"	seamless natural white muslin cyc w/bottom pipe	
45	35'	full stage black	

*RED – These line sets may be taken to the grid only.

*BLUE - These line sets may be taken down or moved around to suit your needs, please discuss during advance.

*GREEN - These line sets make up our Repertory Light Plot which can be altered; please discuss during advance.

*PURPLE - These line sets may be taken to the grid only.

****Please Note: If a full strip is needed on stage; all line sets will be gridded, unless discussed in detail during advance process.**

AUDIO

	Placement of Equipment	Type of Equipment
Main Arrays	Stage Left + Right Arrays (Hung on ½ ton motors)	24 Meyer M'elodie 12 per side
	Center Cluster (Hung on a 1-ton motor)	10 Meyer Mina
Front Fills	Subs	2 Meyer HP-700
	On front of stage or house floor if stage stairs are in use	2 Meyer Mina
Console	FOH Mix Position – 127' from stage	Yamaha QL5 Digital Mixing Console
	MON Mix Position - SL	Yamaha M7CL Mixing Console
Snake	Located in Audio Control Room, fed via patch panels located DSL, DSR, and Orchestra Pit	DigiCo SD Rack

MONITOR SPEAKERS

2 – Meyer UM-100P powered wedges
2 – Meyer UM-1p powered wedges

2 – Meyer MJF-212 powered wedges
4 – L'acoustic 108P powered wedges

DI | STAGE BOX | PRE-AMP CATALOGUE

Direct Boxes	4 Radial J48 Active Direct Boxes	4 Whirlwind IMP 2 DI's (passive)
	4 Whirlwind Director DI's (passive)	1 Whirlwind pcDI Stereo Computer Interface
Stage Boxes	2 Wireworks MMB 19 channel stage input boxes	2 Wireworks MMB 6 channel stage input boxes
	2 Wireworks MMB 12 channel stage input boxes	All necessary G-Block connectors and cables

Snake Pull from FOH to ORCHESTRA PIT IS 250'

Communications	Clear Com permeant access points throughout the theatre. ClearCom Headsets + Belt packs - XLR Inputs. HME Digital Wireless Headsets + Belt packs
----------------	--

IN HOUSE MICROPHONES

Wireless Microphones			Dynamic Microphones		
#	Type	Notes	#	Type	Notes
4	Shure QLXD 124/85 (SM58hh, plus lav/bodypack) J50 Band	4 countrymen E6 headsets	3	Shure SM57 LC	
2	Shure UR2 UHF-R transmitters w/ KSM	9 - capsules	2	Shure Beta 91A	
1	Shure UR-4D Diversity 2-channel receiver	400 – hz range	4	Shure Beta 58A	w/ accessories
1	Sennheiser ew-100 wireless handheld		4	Shure Beta 57A	w/ accessories
			1	Shure Beta 52A	w/ accessories
			3	Shure SM 58-LC new	w/ accessories
			1	SM 58	vintage
			1	Shure SM 58-S - PG58	switched
			2	SM 57-LC	w/ accessories
			Antenna Distribution Systems		
			1	Shure UA845UWB	
			1	Shure UA845	

A variety of XLR and microphone stands are available in house

ELECTRICS

Hanging Positions:

Position	Details	Available Circuits	Distance from DS Center
Box Booms	Two box booms are located balcony left and right. Currently our rep plot has them outfitted with 8 ETC Source4 10° 750w fixtures.	12 stage-pin per side 7 horizontal pipes avail. Circuits 1-12 HL Circuits 25-36 HR	87'
Balcony Rail	Currently our rep plot has the rail outfitted with a general stage/apron wash as well as our house projector which is hung at center. Please inform us of anything you'd like to hang as we do have weight restrictions.	22 stage-pin circuits available	55'
Onstage Drops	Three (3) drop boxes per side from grid iron SL + SR. Socapex multi-connectors, terminate to house dimmer racks.	Four (4) breakouts of stage-pin available per drop	N/A
Floor Pockets	Three (3) pockets per side SL + SR and one (1) center	Three (3) circuits per pocket	N/A
Please note there is NO cove position in our house!			

Available House Lighting Equipment:

Equipment	Details	Additional Equipment	Notes
Dimmers	ETC Sensor Dimmer Rack		Installed summer 2012
Consoles	1 – ETC Element 500 Console	2 -Touch screens	
Fixtures	96 – ETC Source 4 Pars <i>Very Narrow, Narrow, Medium, and Wide Lenses Available</i>	24 – 36° ETC S4 Leko	<u>All include:</u> C-Clamp Color Frames Safety Cable 120 – size “A” pattern holders C-clamp, safety
	24 - 10° ETC S4 Leko	24 – 50° ETC S4 Leko	
	24 – 19° ETC S4 Leko	6 – SKY CYC 3 section	
	24 – 26° ETC S4 Leko	16 – 6 Circuit Lamp Bars	
	8 – ovation LED Battens		
Cable	11 – 50’ 12/14 multi	1 – 100’ DMX	
	8 – 75’ 12/14 multi	Assorted adaptors, breakouts, etc....	
	8 – 100’ 12/14 multi		
Spot Lights	2 - Lycians 1290s	Power, Gel Frames	Located 153’ from downstage centerline
Please NOTE! FOH to Stage is a minimum of 250’ of cable			

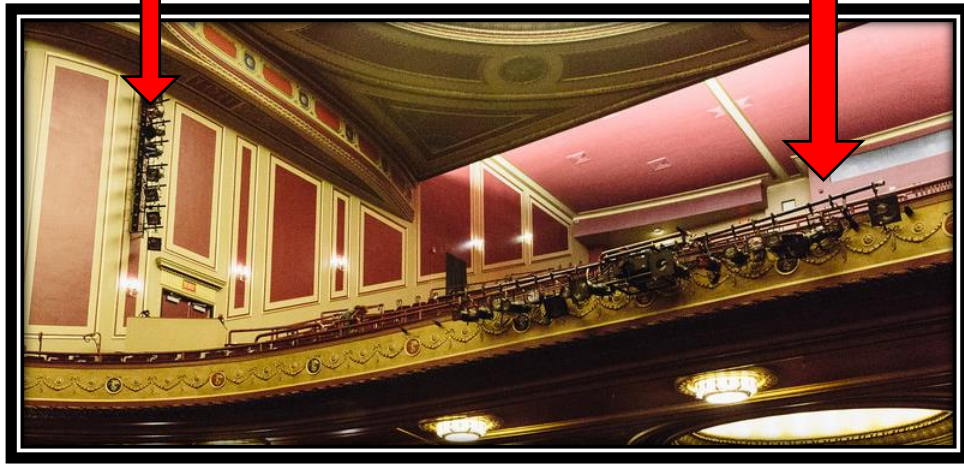
FOH LIGHTING POSITIONS

FOH Box Booms (HL + HR)

Each boom holds the below fixtures from our house repertory plot.

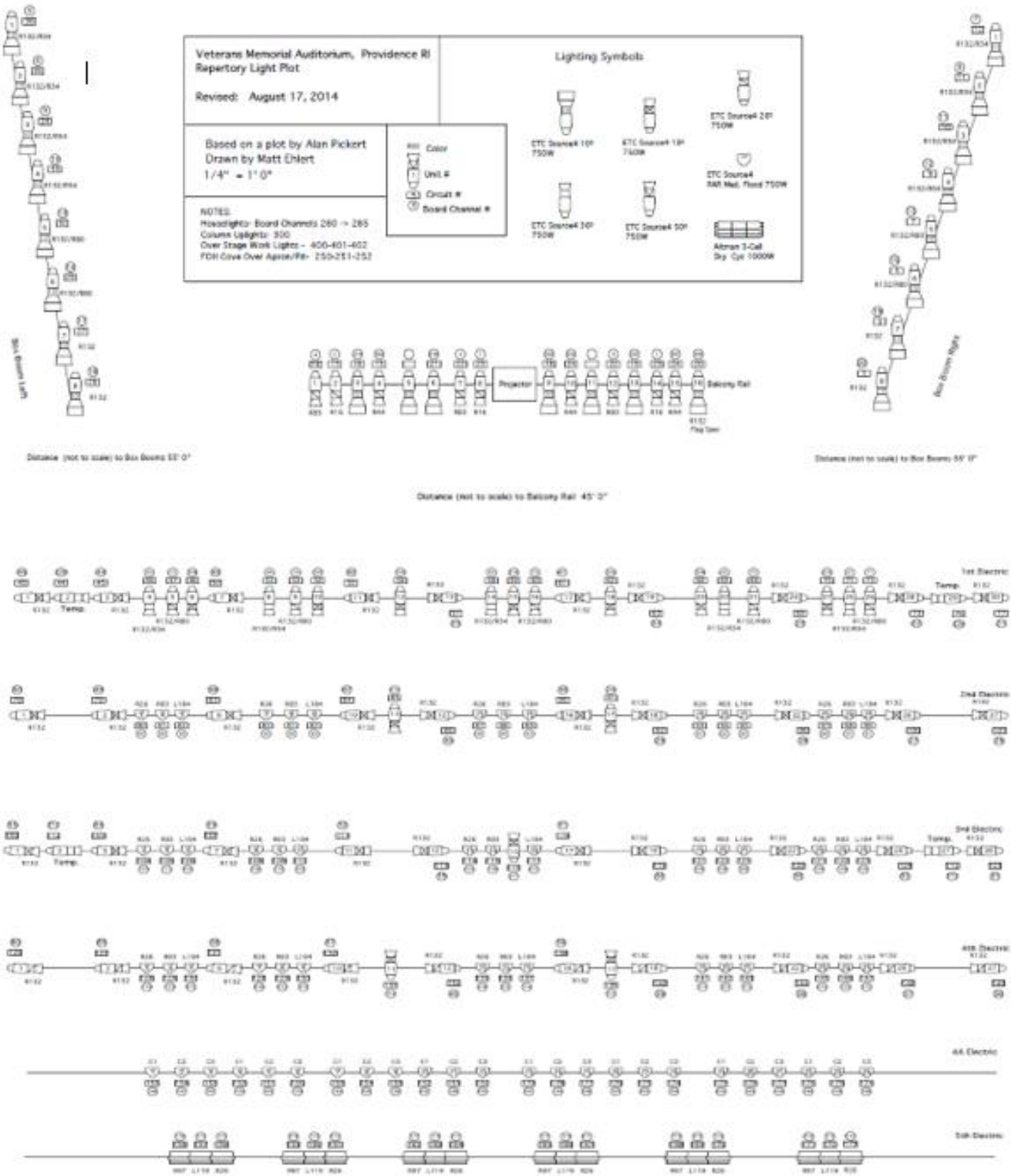
FOH Balcony Rail

The FOH balcony rail holds the below fixtures from our house repertory plot.

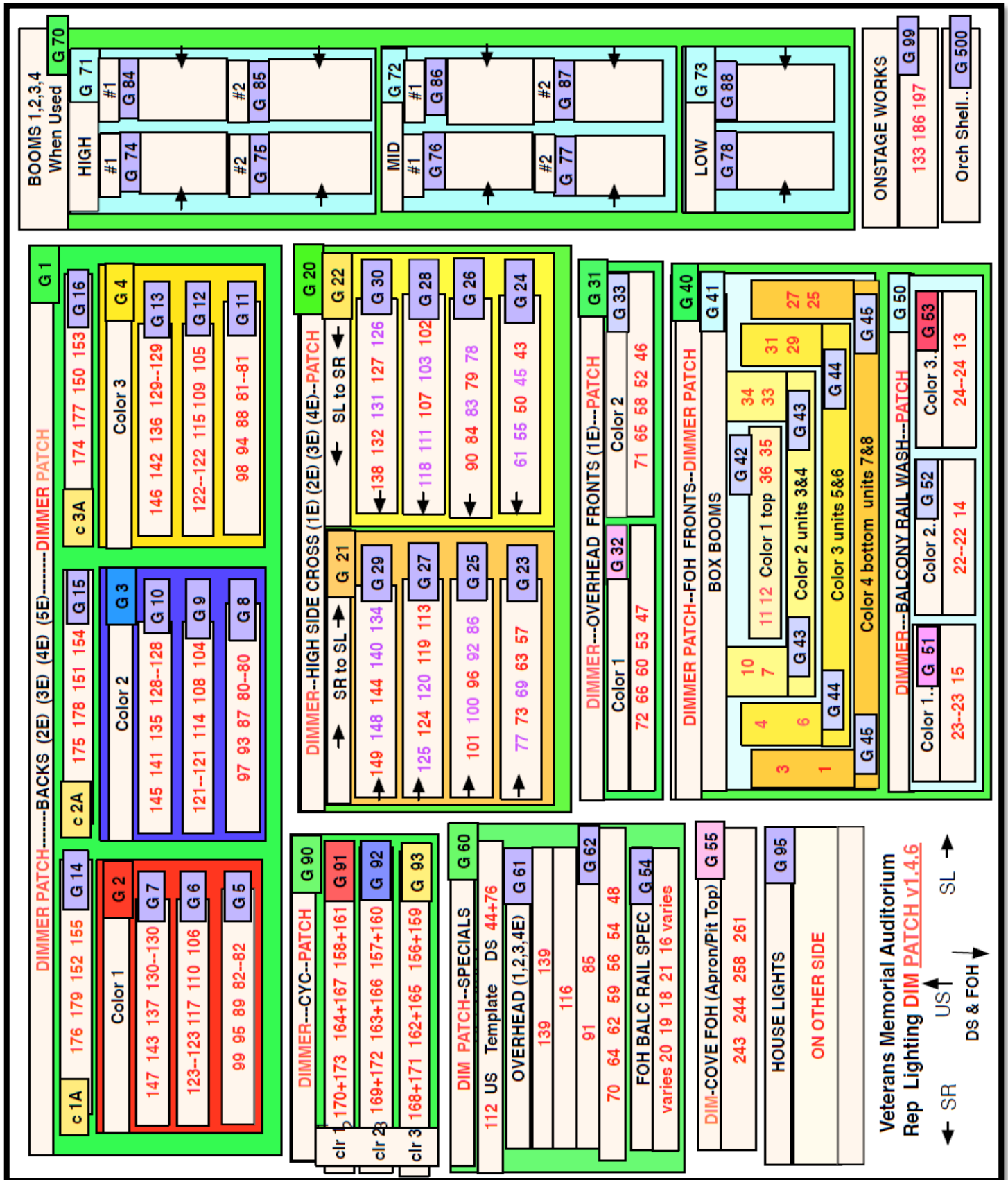


<u>FOH Box Booms HL + HR</u>		<u>FOH BALCONY RAIL</u>	
FROM TOP TO BOTTOM; EACH SIDE HOLDS THE FOLLOWING:		FROM LEFT TO RIGHT, THE BALCONY RAIL HOLDS THE FOLLOWING:	
HOUSE LEFT	HOUSE RIGHT		
#1 ETC S4 10° 750W	#1 ETC S4 10° 750W	#1 ETC S4 26° 750W	#9 ETC S4 10° 750W
#2 ETC S4 10° 750W	#2 ETC S4 10° 750W	#2 ETC S4 26° 750W	#10 ETC S4 26° 750W
#3 ETC S4 10° 750W	#3 ETC S4 10° 750W	#3 ETC S4 10° 750W	#11 ETC S4 10° 750W
#4 ETC S4 10° 750W	#4 ETC S4 10° 750W	#4 ETC S4 26° 750W	#12 ETC S4 26° 750W
#5 ETC S4 10° 750W	#5 ETC S4 10° 750W	#5 ETC S4 10° 750W	#13 ETC S4 10° 750W
#6 ETC S4 10° 750W	#6 ETC S4 10° 750W	#6 ETC S4 10° 750W	#14 ETC S4 26° 750W
#7 ETC S4 10° 750W	#7 ETC S4 10° 750W	#7 ETC S4 26° 750W	#15 ETC S4 26° 750W
#8 ETC S4 10° 750W	#8 ETC S4 10° 750W	#8 ETC S4 26° 750W	#16 ETC S4 10° 750W
		HOUSE PROJECTOR @ C	

HOUSE REPERTORY LIGHTING PLOT



HOUSE REPERTORY DIMMER PATCH



HOUSE REPERTORY MAGIC SHEET

BOARD CHANNEL ---- BACKS (2E) (3E) (4E) (5E) --- BOARD CHANNEL		BOOMS 1,2,3,4 When Used	
c 1A	180 181 182 183	G 14	G 70
c 2A	184 185 186 187	G 15	G 71
Color 1		#1	#1
112 113 114 115--115	G 2	G 74	G 84
100--100 101 102 103	G 7	133	153
81 82 83 85--85	G 6	132	152
	G 5	131	151
		130	150
Color 2		#2	#2
116 117 118 119--119	G 3	G 75	G 85
104--104 105 106 107	G 10	137	157
86 87 89 90--90	G 9	136	156
	G 8	135	155
		134	154
Color 3		#3	#3
120 121 122 123--123	G 4	G 76	G 86
108--108 109 110 111	G 13	141	161
91 92 94 95--95	G 12	140	160
	G 11	139	159
		138	158
Color 4		#4	#4
	G 16	G 77	G 87
		145	165
		144	164
		143	163
		142	162
Color 5		#5	#5
	G 1	G 78	G 88
		149	169
		148	168
		147	167
		146	166
Color 6		#6	#6
	G 20	G 79	G 89
		157	177
		156	176
		155	175
		154	174
		153	173
		152	172
		151	171
		150	170
		149	169
		148	168
		147	167
		146	166
		145	165
		144	164
		143	163
		142	162
		141	161
		140	160
		139	159
		138	158
		137	157
		136	156
		135	155
		134	154
		133	153
		132	152
		131	151
		130	150
		129	149
		128	148
		127	147
		126	146
		125	145
		124	144
		123	143
		122	142
		121	141
		120	140
		119	139
		118	138
		117	137
		116	136
		115	135
		114	134
		113	133
		112	132
		111	131
		110	130
		109	129
		108	128
		107	127
		106	126
		105	125
		104	124
		103	123
		102	122
		101	121
		100	120
		99	119
		98	118
		97	117
		96	116
		95	115
		94	114
		93	113
		92	112
		91	111
		90	110
		89	109
		88	108
		87	107
		86	106
		85	105
		84	104
		83	103
		82	102
		81	101
		80	100
		79	99
		78	98
		77	97
		76	96
		75	95
		74	94
		73	93
		72	92
		71	91
		70	90
		69	89
		68	88
		67	87
		66	86
		65	85
		64	84
		63	83
		62	82
		61	81
		60	80
		59	79
		58	78
		57	77
		56	76
		55	75
		54	74
		53	73
		52	72
		51	71
		50	70
		49	69
		48	68
		47	67
		46	66
		45	65
		44	64
		43	63
		42	62
		41	61
		40	60
		39	59
		38	58
		37	57
		36	56
		35	55
		34	54
		33	53
		32	52
		31	51
		30	50
		29	49
		28	48
		27	47
		26	46
		25	45
		24	44
		23	43
		22	42
		21	41
		20	40
		19	39
		18	38
		17	37
		16	36
		15	35
		14	34
		13	33
		12	32
		11	31
		10	30
		9	29
		8	28
		7	27
		6	26
		5	25
		4	24
		3	23
		2	22
		1	21
		0	20
		-1	19
		-2	18
		-3	17
		-4	16
		-5	15
		-6	14
		-7	13
		-8	12
		-9	11
		-10	10
		-11	9
		-12	8
		-13	7
		-14	6
		-15	5
		-16	4
		-17	3
		-18	2
		-19	1
		-20	0
		-21	-1
		-22	-2
		-23	-3
		-24	-4
		-25	-5
		-26	-6
		-27	-7
		-28	-8
		-29	-9
		-30	-10
		-31	-11
		-32	-12
		-33	-13
		-34	-14
		-35	-15
		-36	-16
		-37	-17
		-38	-18
		-39	-19
		-40	-20
		-41	-21
		-42	-22
		-43	-23
		-44	-24
		-45	-25
		-46	-26
		-47	-27
		-48	-28
		-49	-29
		-50	-30
		-51	-31
		-52	-32
		-53	-33
		-54	-34
		-55	-35
		-56	-36
		-57	-37
		-58	-38
		-59	-39
		-60	-40
		-61	-41
		-62	-42
		-63	-43
		-64	-44
		-65	-45
		-66	-46
		-67	-47
		-68	-48
		-69	-49
		-70	-50
		-71	-51
		-72	-52
		-73	-53
		-74	-54
		-75	-55
		-76	-56
		-77	-57
		-78	-58
		-79	-59
		-80	-60
		-81	-61
		-82	-62
		-83	-63
		-84	-64
		-85	-65
		-86	-66
		-87	-67
		-88	-68
		-89	-69
		-90	-70
		-91	-71
		-92	-72
		-93	-73
		-94	-74
		-95	-75
		-96	-76
		-97	-77
		-98	-78
		-99	-79
		-100	-80
		-101	-81
		-102	-82
		-103	-83
		-104	-84
		-105	-85
		-106	-86
		-107	-87
		-108	-88
		-109	-89
		-110	-90
		-111	-91
		-112	-92
		-113	-93
		-114	-94
		-115	-95
		-116	-96
		-117	-97
		-118	-98
		-119	-99
		-120	-100
		-121	-101
		-122	-102
		-123	-103
		-124	-104
		-125	-105
		-126	-106
		-127	-107
		-128	-108
		-129	-109
		-130	-110
		-131	-111
		-132	-112
		-133	-113
		-134	-114
		-135	-115
		-136	-116
		-137	-117
		-138	-118
		-139	-119
		-140	-120
		-141	-121
		-142	-122
		-143	-123
		-144	-124
		-145	-125
		-146	-126
		-147	-127
		-148	-128
		-149	-129
		-150	-130
		-151	-131
		-152	-132
		-153	-133
		-154	-134
		-155	-135
		-156	-136
		-157	-137
		-158	-138
		-159	-139
		-160	-140
		-161	-141
		-162	-142
		-163	-143

VIDEO + PROJECTION

	Description	Location Notes
Projectors	Christie 14K Digital Projector WU14K-M	Mounted on Balcony Rail
Lenses	1.5-2.0 SX Roadster Lens	1.45-1.8 HD Roadster Lens
Switcher	Roland V-40HD Multiformat Switcher	With monitors and MacBook Pro laptop
Screens	10' x 17' Da-Lite Deluxe Duel Vision Screen	Available accessories: Hanging kit, Freestanding legs, Black dress kit. Front or rear projection.
	36' x 22' Da-Lite Matte Projection Screen	Permanently hung on lineset #5, 4'-4" from plaster line
Accessories	A variety of HDMI, SDI, DVD, Blu-ray and adapters available	Please note that our SDI cable will not transmit Blu-ray because of copyright



STAGE GOODS

Available House Soft Goods (fixed*)

- 1 royal purple main drape, 28'h x 28'w (opening: guillotine or traveler) *
- 1 royal purple fixed valance at a 23'-7" trim*
- 1 royal purple valance/border downstage of main drape (adjustable trim) *
- 6 pairs of Black Legs 28'h x 13'w
- 4 black Borders
- 1 full stage black out 28'h x 52'w
- 1 pair of black panels 28'h x 28'w (set at midstage (opening: guillotine or traveler)
- 1 black sharks tooth scrim 28'h x 52'w
- 1 natural, seamless muslin Cycloram



**** All available in-house soft goods are rated "IFR" (Inherently Flame Retardant)**

Risers, Platforms, & Staging

- o 4 Wenger Choral Risers 3' x 8' with 8" legs
- o 4 Wenger Choral Risers 3' x 8' with 16" legs
- o 4 Wenger Choral Risers 3' x 8' with 24" legs
- o 8 Wenger signature Choral Risers with 4-step capacity (back and side rail options)

Marley Dance Floor

- o ROSCO Brand dance floor: black on one side, grey on the other.
- o Fully covers stage

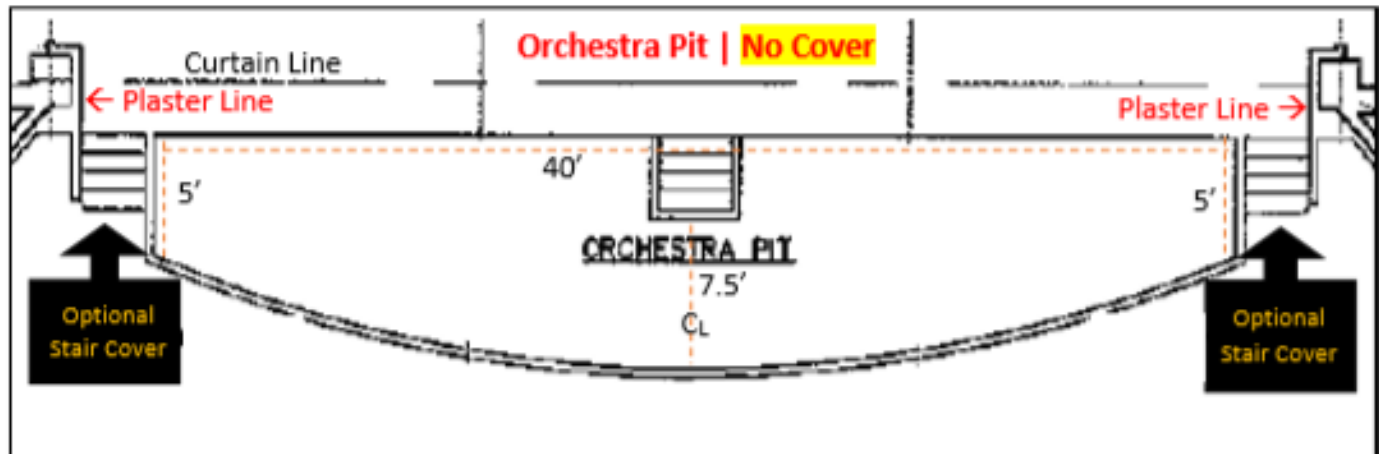


Orchestra Shell + Accessories

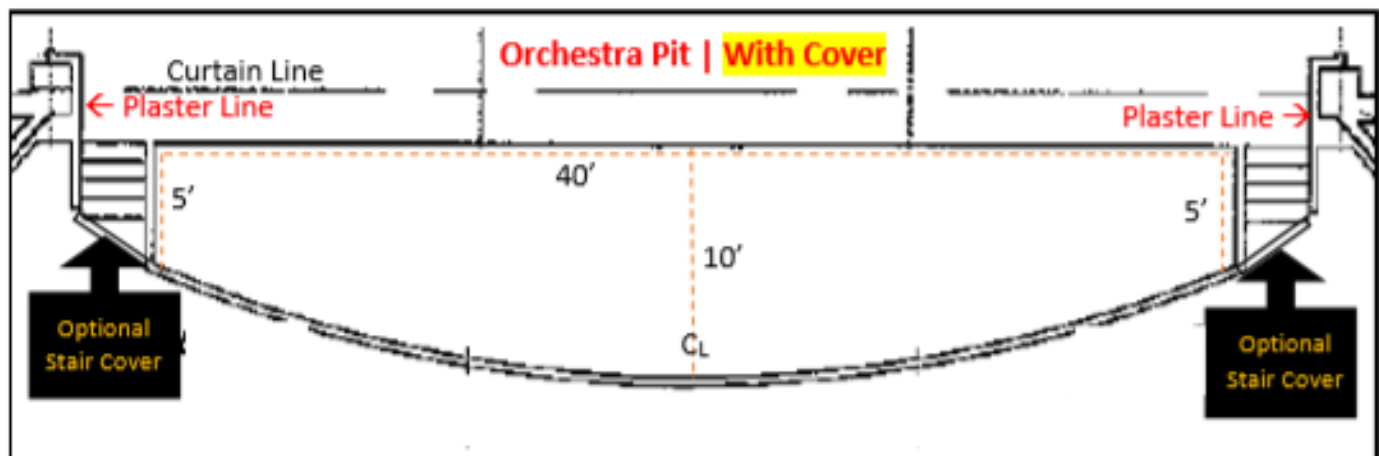
The VETS is the principal home of the Rhode Island Philharmonic Orchestra & Music School; therefore, we have the privilege of having the following equipment and accessories available. If interested, please let us know during your advance. This will incur an additional labor call.

- o Deployable Wenger "Diva" acoustic symphony shell with accompanying Wenger "concert master" roof.
- o When not in use, the roof is flown out on 4 separate line sets; these are permanent.
- o Shell walls are stored in loft above stage on the SL side and otherwise do not interfere with show operations.
- o 73 x Wenger "symphony" orchestra chairs
- o 5 x Wenger "symphony" cello chairs
- o 72 x music stands (no lights available)
- o 65 x steel folding chairs





Generally, our pit cover does not get removed unless specifically specified by a tour. Stair plugs (SL & SR) may be removed for any show (discuss in advance). There is enough room for 25 chairs in our pit with greenroom access through a center door for musicians.



Our pit cover brings the show closer to the audience without a huge gap. If you would like the pit removed, it would be an additional 8h labor call that would have to happen prior to your load IN and be restored once you have left. Schedule permitting.

SPECIAL EFFECTS RULES + REGULATIONS

Due to state laws and building requirements there are specific guidelines that must be followed if any kind of special effects are being used in our venue. Our stage is equipped with a deluge firewall system.

We have beam smoke sensors in the house as well as throughout the venue. These sensors **MUST** be turned off before any atmospheric effects are tested or run. Our fire panel may **ONLY** be turned off by City Fire Command Detail which is booked 1.5h prior to advertised event start time. **If there is a need for a detail prior to the 1.5h you must advance this with the production manager** (detail fees will apply)

Confetti

The venue allows paper or eco-friendly confetti | NO MYLAR confetti allowed
Additional cleaning fees may apply.

Haze | Fog

As per Rhode Island State law; No haze or fog may be run in the building without a Fire Command Detail present. Please advance in detail your haze or fog needs so that we can plan accordingly. Fire Command Detail must be present to turn off Fire Panel which is booked 1.5h prior to advertised event start time. **If there is a need for a detail prior to the 1.5h for lighting focus etc... you MUST advance this with the production manager** (detail fees will apply). The venue's alarm system is intertwined with the hotel next door, if the atmospheric effect becomes too thick, it may impact the alarms in both venues. We will work with you on a case by case basis to address concerns you may have.

Dry Ice

Dry ice is allowed, please be reminded to bring your own coolers and gloves. We do not dispose of leftover ice. Please let us know if you need vendor information.

Pyrotechnics

As per Rhode Island State law if there is an open flame (open flame devices are defined as candles, torches, butane burners or any other flame producing device) you will need to download and fill out the proper pyrotechnics permits found at: www.fire-marshal.ri.gov/testingforms/forms.php (discuss during advance) - some limitations will apply.

Snow | Bubbles

Strobe Light

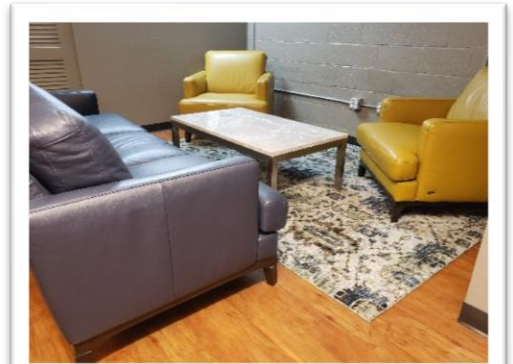
If using strobing effects, please denote this during advance so that we may inform our patrons. Please let us know if you will be posting signage.

WARDROBE, PRODUCTION OFFICE, & GREENROOM

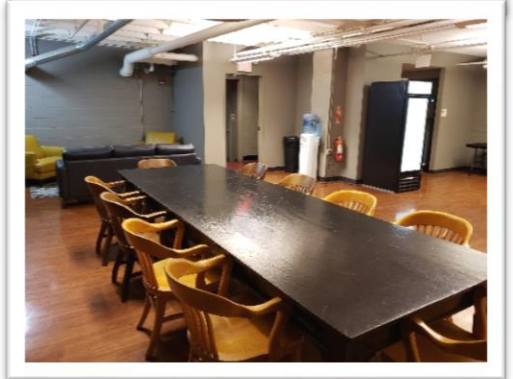
- Wardrobe Room is located at the sub-stage level which is accessed via SR stairs, SL freight elevator, or street; and is equipped with the following:
 - 2 high efficiency washer & dryer sets (please supply your own laundering supplies)
 - A large deep double sink is available for hand washing.
 - 2 ironing sets
 - 1 steamer
 - 4 rolling wardrobe racks



- Production Office is located backstage right - stage level; it is equipped with the following
 - 2 wall-to-wall tables
 - 6 chairs
 - respectively, this may be used as a dressing room for larger tours.



- Greenroom (43' x 40') is located at the sub-stage level which is accessed via SR stairs, SL freight elevator, or street; and features:
 - 3 additional unisex restrooms
 - pantry, sink, glass front refrigerator, 80lb ice machine
 - large dining table with chairs
 - foosball table
 - leather couch with accompanying chairs, & marble coffee table
 - If sound or video feed is needed for greenroom, please delineate in advance, as this will need to either be provided by tour, or equipment rented.
 - Access to the Orchestra Pit is in the greenroom



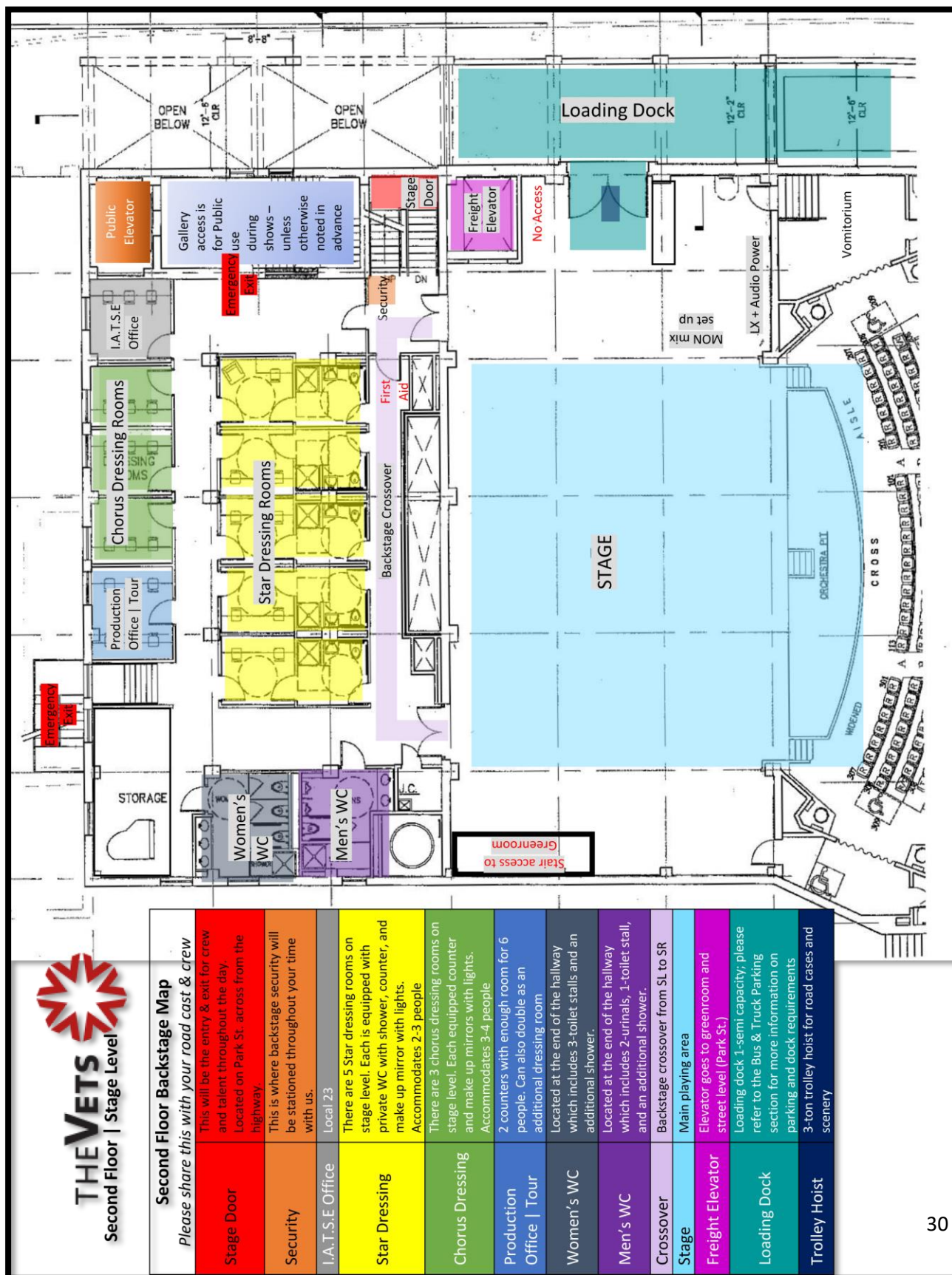
DRESSING ROOMS + BACKSTAGE LAYOUT

The VETs is equipped with the following backstage rooms located on the stage level (level #2) and one floor above (level #3) of the building:

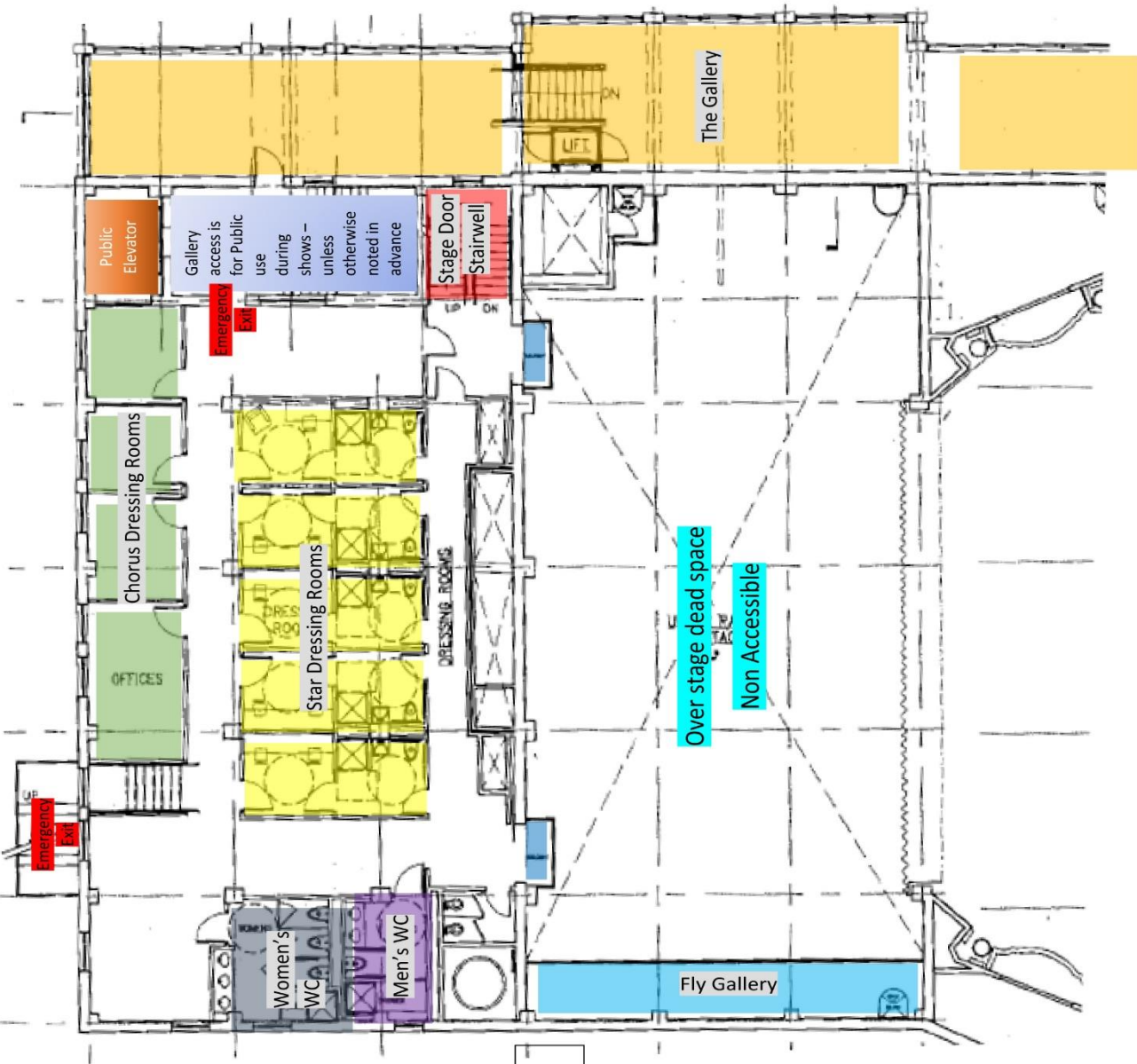
- Five (5) star dressing rooms, equipped with private bathroom and shower, counter, and makeup mirror with lights, (a small couch, and mini-refrigerator; when available). Star rooms typically accommodate two (2) to three (3) people.
- Four (4) chorus dressing rooms equipped with makeup mirrors with lights. Chorus rooms typically accommodate four (4) people comfortably.
- One floor up (level #3) the layout mirrors the 2nd floor with five (5) star dressing rooms and five (5) chorus dressing rooms (there are no counters or make up mirrors in these rooms).
- Restrooms are located at the end of each backstage hallway which also include a shower.
- One (1) large chorus room, located at the sub-stage level. This chorus room has space for up to fifteen (15) people and is equipped with counters and make up mirrors with lights. Access to this is via staircase from on-SR. 25' x 30'
- All dressing rooms, offices, and performer hallways are equipped with a BOSE monitor speaker and individual volume control. *(unavailable in greenroom or lg chorus room)*



2ND FLOOR GROUND PLAN | STAGE LEVEL



3RD FLOOR GROUND PLANS



Third Floor Backstage Map	
Please share this with your road cast & crew	
Stage Door Stairwell	This stairwell leads to and from the stage as well as the Park St. entrance, located on Park St. across from the highway.
Star Dressing	There are 5 Star dressing rooms on stage level. Each is equipped with private WC with shower, counter, and make up mirror with lights. Accommodates 2-3 people
Chorus Dressing	There are 4 chorus dressing rooms on level 3. Each is an empty room, if you need a table or chair, please let us know. Accommodates 4-5 people
Women's WC	Located at the end of the hallway which includes 3-toilet stalls and an additional shower.
Men's WC	Located at the end of the hallway which includes 2-urinals, 1-toilet stall, and an additional shower.
The Gallery	This is a public cross way from 83 Park St. to the Lobby of the Theater. Sometimes can be used as a M&G location
Fly Gallery	Access via ladder onstage level
Over Stage Access	Sliding barn doors on both SL & SR for cable ties, additional equipment, etc.... if necessary

CATERING + HOSPITALITY SERVICES

The following are caterers that The VETS has used in no order:

Millonzi Fine Catering 11 Curson St. West Warwick, RI 401-615-7891 Kevin Millonzi Chef	Just Ellen's INC. 635 Division Rd. East Greenwich, RI 02818 401-419-1614 Ellen LoConto Chef	BUGG'D Out BBQ Woonsocket, RI 401-524-2745 BuggdouttBBQ.com
Local Hero Catering 4 Power Rd. Pawtucket, RI 02860 401-524-5928 Andrew Esposito Chef		

An updated menu binder is in the Tour Production Office upon arrival.

The VETs Business Directory

The following list of businesses are not affiliated with PFM or The VETs and are in no order. These are merely suggestions; If you are looking for something specific, please let us know and we will be happy to guide you in the right direction.

Health | Wellness

Acupuncture	Dr. Tierney Tully at East Bay Acupuncture 461 Maple Avenue, Barrington, RI 02806	401-247-2857
	Christine Monteiro, D.A 144 Waterman Street, Suite 5, Providence, RI 02906	401-272-2288
Chiropractors	Dr. Douglas M. DeCubellis 143 Westminster St., Providence, RI 02903	401-521-1900
	Dr. Amy Westrick 511 Broadway, Providence, RI 02909	401-453-2225
Dental	Dr. Carl Cotoia, DDS 183 Waterman Ave. Providence, RI 02906	401-831-8998
	Dr. Paul J. Matrullo DDS 1280 Park Avenue Cranston, RI 02910	401-943-0644
	Dr. Jean Arthur 372 Ives St. Providence, RI 02906	401-862-6032

Dermatology	SkinPros 1287 North Main Street Providence, RI 02904	401-272-2724
	Dr. Ellen Frankel 750 Reservoir Ave., Cranston, RI 02910	401-943-0761
Ear Nose Throat	ENT RI Ste 2A, 148 West River Street Providence, RI 02904	401-728-0140
	Dr. Joseph P. Bellino & Dr. Peter Nigri 118 Dudley St., Providence, RI 02905	401-274-2300
General Medicine	Dr. Daniel Schreve 47 Hazard Ave., East Providence, RI 02914	401-434-9100 or 401-434-9117
	Rhode Island Hospital 593 Eddy Street, Providence RI 02903	401-444-4000
Gyms Fitness	Planet Fitness – Offers a 1 day \$10 pass 387 West Fountain St. Providence, RI 02903	401-865-6300
	Synergy Health & Fitness 3 Davol Square, Providence, RI 02903	401-519-6555
	CrossFit Providence 425 Washington Street Providence, RI 02903	401-453-2348
	VP Fitness 10 Dorrance Street, Providence, RI 02903	401-479-7099
Hospitals Treatment Centers	Rhode Island Hospital 593 Eddy Street Providence, RI 02903	401-444-4000
	The Miriam Hospital 164 Summit Avenue Providence, RI	401-793-2500
	Women & Infants 101 Dudley Street Providence, RI 02905	401-274-1100
	Bradley Hospital children + adolescent psychiatric 1011 Veterans Memorial Parkway Riverside, RI 02915	401-432-1000
	Butler Hospital adult psychiatric + addiction 345 Blackstone Blvd. Providence, RI 02906	401-455-6200
	The Providence Center 530 North Main Street Providence, RI 02904	401-838-0188
Pharmacies	Walgreens Pharmacy 1140 North Main Street Providence, RI 02904	401-278-4901
	Stop & Shop Pharmacy 1128 Mineral Spring North Providence, RI 02904	401-727-3900
	CVS (No Pharmacy) 70 Kennedy Plaza, Providence, RI 02903	401-861-5050
Physical Therapy Orthopedics	Foundry Orthopedic 285 Promenade Street Providence, RI 02908	401-459-4001
	West bay Orthopedic 120 Centerville Road Warwick, RI 02886	401-738-3730
	University Orthopedics 2 Dudley Street Suite 200 Providence, RI 02905	401-457-1500
	Performance Physical Therapy 49 Seekonk Street Providence, RI 02906	401-230-1126

Pediatrics	Coastal Medical Pediatrics 900 Warren Ave., East Providence, RI 02914	401-421-6481
	Hasbro Children's Hospital 593 Eddy Street LL Providence, RI 02903	401-444-4471
	East Side Pediatrics 285 Governor Street 3 rd Fl Providence, RI 02906	401-383-4411
Podiatry	Dr. Joseph DeCesare 201 Broadway, Providence, RI 02903	401-421-9167
	University Foot & Ankle 235 Plain Street STE 201 Providence, RI 02905	401-861-8830
Salons Day Spas	Coiffurium East Side 800 Hope Street Providence, RI 02906	401-331-1115
	Arrow Salon 230 Rochambeau Avenue Providence, RI 02906	401-521-1457
	Impulse Hair Designs The Arcade 65 Weybosset Street Providence, RI 02903	401-421-9294
	Moss Salon 114 North Main Street Providence, RI 02903	401-751-8877
	MasterCuts Providence Place Mall 86 Providence Pl #5030 Providence, RI 02903	401-369-7067
	Christiaan Salon & Day Spa 4 Benefit Street Providence, RI 02903	401-272-8778
	Flipp Salon 38 Transit Street Providence, RI 02903	401-274-1981
Women's Medicine	Women's Primary Care, Medicine Collaborative West River Center 146 West River Street 3 rd FL Providence, RI 02904	401-739-7010
	Women & Infants 101 Dudley Street Providence, RI 02905	401-274-1100
Services		
Bus Services	Conway Bus Service	401-658-3400
	Pawtuxet Valley Bus Lines	800-828-4101
	Viking Tours	401-847-6921
Cab Services	Yellow Cab	401-941-1122
	Laurel-Sweeney	401-521-4200
Grocery	Whole Foods Market 601 North Main Street, Providence, RI, 02904	401.621.5990
	Stop and Shop 333 West River Street, Providence RI 02904	401.861.9300
	Serendipity Gourmet 192 Weybosset Street, Providence RI 02903	401.270.2233
Lodging	Biltmore The Graduate (providencebiltmore.com)	401-421-0700
	Hampton Inn Hotel (hamptoninn.com)	401-608-3500
	Hilton Providence (hilton.com/providence)	401-831-3900

Lodging	Hotel Providence (hotelprovidence.com)	401-861-8000
	Marriott (marriottprovidence.com)	401.272.2400
	Providence Courtyard by Marriott (Marriott.com)	401.272.1191
	Renaissance Providence (renaissanceprovidence.com)	401.919.5003
	Westin Providence (westinprovidence.com)	401.598.8000
	Wyndham Garden Hotel (jpitt@wyndham.com)	401.272.5577
Laundry Dry Cleaning	Freeway Laundry 135 Broadway, Providence, RI 02903	401.453.0000
	The Laundry Club 140 Medway Street, Providence RI 02903	401.272.2520
	On the Go Laundry & Dry Cleaning Pick Up Delivery Service www.onthegolaundry.com	401-749-6379
Limo Car Services	Viking Tours (out of Newport) 44 Long Wharf Mall Newport, RI 02840	401-847-6921
	Sentinel Limousine & Coach Inc. 11 Clemenceau Street East Providence, RI 02914	401-434-2700
	Enterprise Rent-a-Car 90 Weybosset St. Providence, RI 02903	401-861-4408
Parking	Providence Place Parking Garage	401-270-4421
	MetroPark: Park Row West Exchange Street & Stillman Street Providence, RI	401-455-0188
	Intown Parking 131 Washington St. #203, Providence, RI 02903	401-273-9466
Post Office	Providence Main Post Office 2 Exchange Ter Providence, RI 02903	401-421-7083
	Providence Post Office Weybosset Hill, Providence RI, 02903	401.421.5214